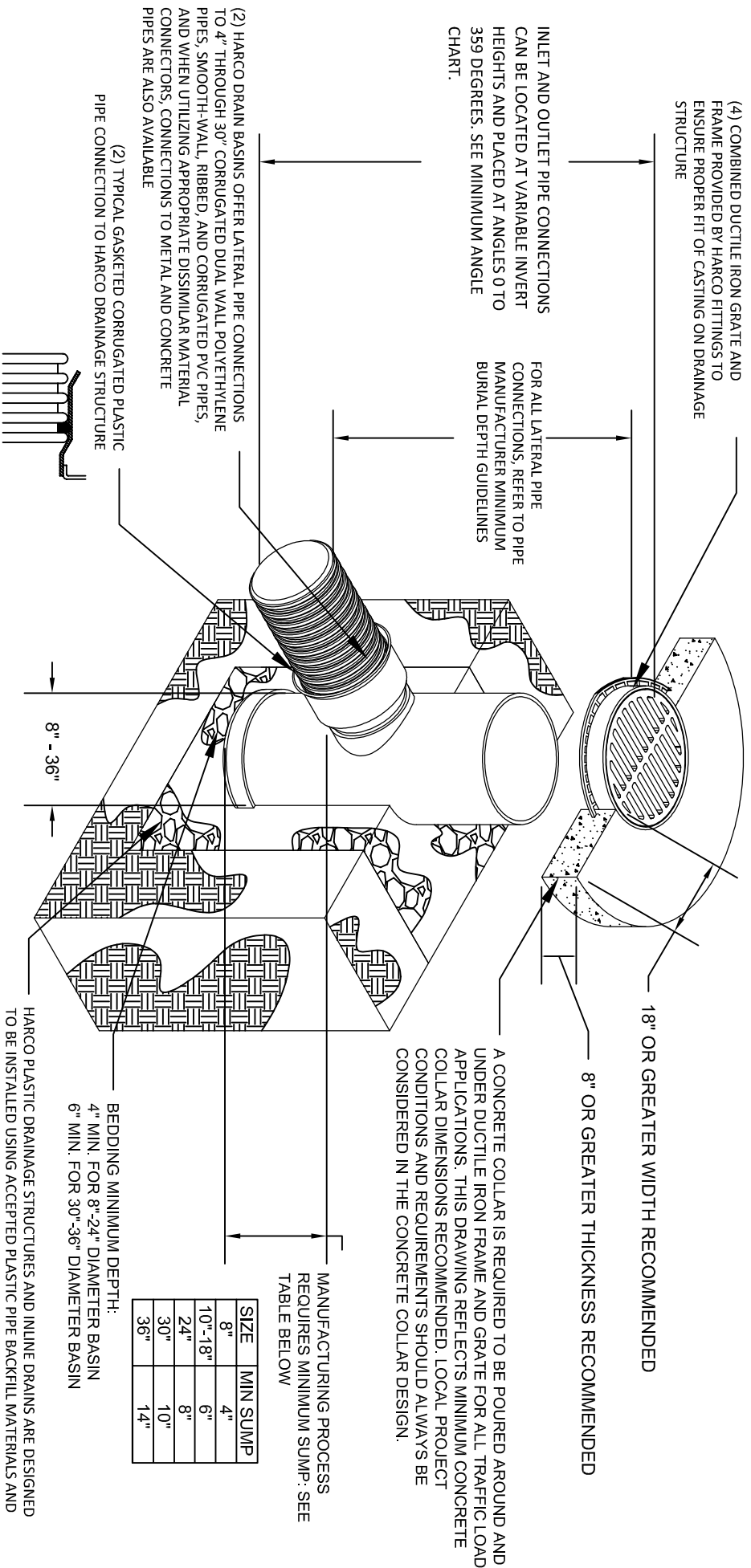


HARCO DRAIN BASIN STANDARD DETAIL



- HARCO plastic drainage structures, including drain basins and inline drains, are fabricated from PVC pipe stock. HARCO employs a thermo-molding process to ensure a consistent watertight seal throughout the drainage structure and its outlet stubs. The PVC resin utilized to make this PVC stock conforms to ASTM D1784 cell class 1245/4
- The outlet stubs for HARCO plastic drainage structures are also manufactured from PVC pipe stock utilizing thermo-molding process to ensure a tight pipe-to-structure fit, so that when utilizing the appropriate pipe gaskets, the pipe-to-structure connection meets or exceeds the pressure requirements of the ASTM D3212 standard for pipe connections of plastic drainage pipe and sewer pipe using flexible elastomeric seals. These pipe gaskets must meet ASTM F477 requirements.
- Riser pipe extensions are required for drain basins taller than 84" due to shipping restrictions, and are available for convenient in-the-field drain basin height adjustments.
- HARCO grates, covers, and frames shall be constructed of ductile iron meeting ASTM A536 Grade 80-55-06. 12" through 36" round and square hinged standard grates and solid covers meet H25 load rating. 12" through 24" round and square hinged pedestrian grates meet H10 load rating. Traffic family and Curb Inlet 2'x2' and 2'x3' grates meet H25 load rating. 8" and 10" grates and solid covers are one-piece drop-in castings designed for light duty load applications. All domed grates are not load rated.



THE HARRINGTON CORPORATION

TITLE		DWG NO		REV
DRAIN BASIN STANDARD DETAIL		2013-001		001
SCALE		DATE		
N/A		2-23-17		
TOL		DWN BY		CKD BY
		JBF		JP
		SIZE		SHEET

IMPORTANT: This drawing is the property of THE HARRINGTON CORP and contains confidential information which is not to be used in whole or in part without the written permission of THE HARRINGTON CORP upon demand. COPYRIGHT 2002 HARRINGTON CORPORATION HARCO FITTINGS