

## HARCO MOLDED PIP FITTINGS

### PIP FITTINGS

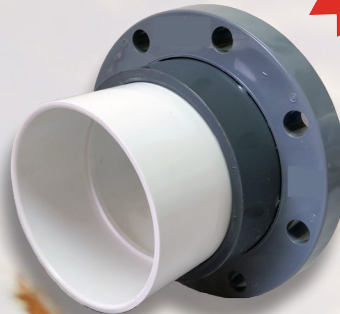
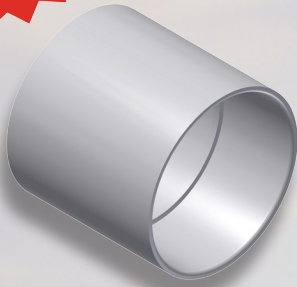
Solvent Weld  
Molded PIP  
Fittings.

New Items  
Include:

- Couplings- 6" and 8"
- IPS Adapters- 6" and 8"
- Flange Adapters- 6" and 8"
- Caps- 15"

Perfect  
Geometry

One piece design



# HARCO PIP FITTING BENEFITS

## **Complete Molded:**

Harco offers a line of molded 80 and 100 psi PIP fittings from 6" thru 12". Configurations available include size on size and reducing tees, 90's, 45's, caps, reducers. HARCO also offers couplings, IPS Adapters, and Flange Adapters in 6" and 8" in addition to 15" caps. Other manufacturers offer fabricated fittings which are host to various problems; one being the use of glued components. Secondly the process of fabricating fittings involves the use of heat and chemicals to soften the pipe stock so it can be bent, pulled and manipulated into a particular shape. Thirdly fabricated tees use a separate insert to form the tee branch, requiring a glue joint. The branch on any fitting is the most vulnerable part thus being more prone to failure. Our injection molded fittings offer a one piece design made from a virgin PVC compound reinforced for strength exactly where it is needed and avoiding the problem prone manufacturing techniques of fabricated fittings.

## **Perfect geometry:**

HARCO molded fittings offers you a consistent and reliable fitting every time. Fabricated fittings have large tolerances; angles, lengths, bell depths and diameters can vary dramatically. HARCO molded fittings are the same geometry every time. You will get the same quality fitting on every order. An added benefit is molded fittings have a much smaller footprint than their fabricated counterpart, meaning better usability and function in tight spots. Much less space will be needed for storage.

## **Delivery:**

At HARCO we take great pride in delivery and put a strong emphasis in delivering on time. Inventory is something we do not take lightly. We hold large product inventories in 4 strategic locations; Dallas, Texas; Phoenix, Arizona; Janesville, Wisconsin and Lynchburg, Virginia. Our goal is to ship on the same day ordered. All deliveries are shipped in boxes designed for that specific item; with consistent packaging and compact size, product storage will be simpler and easier.

## **Quality Control:**

HARCO quality control is second to none. We perform extensive testing during and after the molding process. All HARCO molded fittings meet or exceed all applicable ASABE and ASTM standards.

