

# HARCO PRICE LIST

## PVC SDR 26 Gasketed Sewer Fittings

**Short Form Specifications** - PVC Sewer Fittings shall conform to the requirements of ASTM D3034 and ASTM F1336 with minimum wall thickness of SDR 26. Fittings in sizes 4" through 8" shall be Molded in one piece with elastomeric joints and minimum socket depths as specified in sections 6.2 and 7.3.2 of ASTM D3034. Fittings 10" and larger shall be Molded or fabricated in accordance with ASTM D3034 and ASTM F1336 with manufacturers' standard pipe bells and gaskets. Gaskets shall have a minimum cross sectional area of 0.20 sq. in. and conform to ASTM F477 specification. PVC material shall have a cell classification of 12454 or 13343 as defined in ASTM D1784.

| <b>45° WYE</b> |             |         |         |       |            |
|----------------|-------------|---------|---------|-------|------------|
| (G x G x G)    |             |         |         |       |            |
| SIZE           | PART NUMBER | CTN QTY | WT EACH | STYLE | LIST PRICE |
| 4 x 4          | 26-010404   | 12      | 2.4     | M     | \$37.17    |
| 6 x 4          | 26-010604   | 6       | 4.8     | M     | \$48.27    |
| 6 x 6          | 26-010606   | 4       | 6.8     | M     | \$60.39    |
| 8 x 4          | 26-010804   | 4       | 10      | M     | \$68.28    |
| 8 x 4          | 26-630804   | 4       | 11      | M †   | \$68.28    |
| 8 x 6          | 26-010806   | 4       | 12      | M     | \$78.38    |
| 8 x 8          | 26-010808   | 1       | 17      | F     | \$137.30   |
| 10 x 4         | 26-011004   | 1       | 21      | A     | \$172.79   |
| 10 x 6         | 26-011006   | 2       | 19      | M     | \$175.57   |
| 10 x 8         | 26-011008   | 1       | 23      | FTO   | \$271.28   |
| 10 x 10        | 26-011010   | 1       | 33      | FTO   | \$327.80   |
| 12 x 4         | 26-011204   | 1       | 29      | A     | \$236.07   |
| 12 x 6         | 26-011206   | 1       | 27      | M     | \$239.14   |
| 12 x 8         | 26-011208   | 1       | 36      | FTO   | \$355.55   |
| 12 x 10        | 26-011210   | 1       | 43      | FTO   | \$436.73   |
| 12 x 12        | 26-011212   | 1       | 56      | FTO   | \$464.40   |
| 15 x 4         | 26-011504   | 1       | 41      | FTO   | \$337.14   |
| 15 x 6         | 26-011506   | 1       | 46      | FTO   | \$403.83   |
| 15 x 8         | 26-011508   | 1       | 53      | FTO   | \$450.33   |
| 15 x 10        | 26-011510   | 1       | 64      | FTO   | \$541.23   |
| 15 x 12        | 26-011512   | 1       | 77      | FTO   | \$602.94   |
| 15 x 15        | 26-011515   | 1       | 88      | FTO   | \$761.31   |
| 18 x 4         | 26-011804   | 1       | 68      | FTO   | \$845.93   |
| 18 x 6         | 26-011806   | 1       | 79      | FTO   | \$856.87   |
| 18 x 8         | 26-011808   | 1       | 90      | FTO   | \$887.27   |
| 18 x 10        | 26-011810   | 1       | 98      | FTO   | \$996.84   |
| 18 x 12        | 26-011812   | 1       | 113     | FTO   | \$1,071.19 |
| 18 x 15        | 26-011815   | 1       | 133     | FTO   | \$1,146.25 |
| 18 x 18        | 26-011818   | 1       | 188     | FTO   | \$1,489.01 |



| <b>45° WYE</b> |             |         |         |       |            |
|----------------|-------------|---------|---------|-------|------------|
| (G x G x G)    |             |         |         |       |            |
| SIZE           | PART NUMBER | CTN QTY | WT EACH | STYLE | LIST PRICE |
| 21 x 4         | 26-012104   | 1       | 109     | FTO   | \$1,469.33 |
| 21 x 6         | 26-012106   | 1       | 121     | FTO   | \$1,574.99 |
| 21 x 8         | 26-012108   | 1       | 132     | FTO   | \$1,776.22 |
| 21 x 10        | 26-012110   | 1       | 145     | FTO   | \$2,002.12 |
| 21 x 12        | 26-012112   | 1       | 167     | FTO   | \$2,165.28 |
| 21 x 15        | 26-012115   | 1       | 170     | FTO   | \$2,507.75 |
| 21 x 18        | 26-012118   | 1       | 240     | FTO   | \$2,953.17 |
| 21 x 21        | 26-012121   | 1       | 263     | FTO   | \$3,864.27 |
| 24 x 4         | 26-012404   | 1       | 166     | FTO   | \$2,216.21 |
| 24 x 6         | 26-012406   | 1       | 178     | FTO   | \$2,536.70 |
| 24 x 8         | 26-012408   | 1       | 190     | FTO   | \$2,735.76 |
| 24 x 10        | 26-012410   | 1       | 224     | FTO   | \$2,765.37 |
| 24 x 12        | 26-012412   | 1       | 240     | FTO   | \$2,823.58 |
| 24 x 15        | 26-012415   | 1       | 270     | FTO   | \$2,844.35 |
| 24 x 18        | 26-012418   | 1       | 314     | FTO   | \$3,995.11 |
| 24 x 21        | 26-012421   | 1       | 356     | FTO   | \$4,381.18 |
| 24 x 24        | 26-012424   | 1       | 432     | FTO   | \$4,817.14 |



| <b>STYLE LEGEND:</b> |  |
|----------------------|--|
| A                    | Assembled from Mold components (Stock)   |
| F                    | Fabricated (Stock)   |
| FTO                  | Fabricated To Order; Non-Returnable; Non-Cancelable; Non-Stock (2-4 day lead time) |
| M                    | Molded; Gray Color (Stock)   |
| †                    | DWV Solvent Weld Outlet  |

NOTE: Stock items are subject to prior sale

## HARCO PRICE LIST

### PVC SDR 26 Gasketed Sewer Fittings

| <b>45° WYE</b> |             |         |         |       |            |
|----------------|-------------|---------|---------|-------|------------|
| (G x S x G)    |             |         |         |       |            |
| SIZE           | PART NUMBER | CTN QTY | WT EACH | STYLE | LIST PRICE |
| 4 x 4          | 26-020404   | 1       | 3.1     | A     | \$37.17    |
| 6 x 4          | 26-020604   | 1       | 7.0     | A     | \$48.27    |
| 6 x 6          | 26-020606   | 1       | 8.1     | A     | \$60.39    |
| 8 x 4          | 26-020804   | 1       | 11      | A     | \$68.28    |
| 8 x 6          | 26-020806   | 1       | 12      | A     | \$73.38    |
| 8 x 8          | 26-020808   | 1       | 16      | F     | \$153.49   |
| 10 x 4         | 26-021004   | 1       | 28      | A     | \$162.33   |
| 10 x 6         | 26-021006   | 1       | 26      | A     | \$168.95   |
| 10 x 8         | 26-021008   | 1       | 27      | FTO   | \$270.99   |
| 10 x 10        | 26-021010   | 1       | 32      | FTO   | \$327.43   |
| 12 x 4         | 26-021204   | 1       | 38      | A     | \$235.82   |
| 12 x 6         | 26-021206   | 1       | 37      | A     | \$238.91   |
| 12 x 8         | 26-021208   | 1       | 35      | FTO   | \$355.21   |
| 12 x 10        | 26-021210   | 1       | 45      | FTO   | \$436.27   |
| 12 x 12        | 26-021212   | 1       | 51      | FTO   | \$463.89   |
| 15 x 4         | 26-021504   | 1       | 38      | FTO   | \$336.78   |
| 15 x 6         | 26-021506   | 1       | 54      | FTO   | \$403.44   |
| 15 x 8         | 26-021508   | 1       | 57      | FTO   | \$449.88   |
| 15 x 10        | 26-021510   | 1       | 63      | FTO   | \$540.67   |
| 15 x 12        | 26-021512   | 1       | 74      | FTO   | \$602.28   |
| 15 x 15        | 26-021515   | 1       | 85      | FTO   | \$760.50   |
| 18 x 4         | 26-021804   | 1       | 72      | FTO   | \$845.95   |
| 18 x 6         | 26-021806   | 1       | 81      | FTO   | \$856.92   |
| 18 x 8         | 26-021808   | 1       | 92      | FTO   | \$887.27   |
| 18 x 10        | 26-021810   | 1       | 97      | FTO   | \$996.85   |
| 18 x 12        | 26-021812   | 1       | 112     | FTO   | \$1,071.16 |
| 18 x 15        | 26-021815   | 1       | 130     | FTO   | \$1,146.26 |
| 18 x 18        | 26-021818   | 1       | 173     | FTO   | \$1,489.02 |



| <b>45° WYE</b> |             |         |         |       |            |
|----------------|-------------|---------|---------|-------|------------|
| (G x S x G)    |             |         |         |       |            |
| SIZE           | PART NUMBER | CTN QTY | WT EACH | STYLE | LIST PRICE |
| 21 x 4         | 26-022104   | 1       | 105     | FTO   | \$1,469.33 |
| 21 x 6         | 26-022106   | 1       | 116     | FTO   | \$1,574.99 |
| 21 x 8         | 26-022108   | 1       | 132     | FTO   | \$1,776.22 |
| 21 x 10        | 26-022110   | 1       | 151     | FTO   | \$2,002.12 |
| 21 x 12        | 26-022112   | 1       | 159     | FTO   | \$2,165.28 |
| 21 x 15        | 26-022115   | 1       | 177     | FTO   | \$2,507.75 |
| 21 x 18        | 26-022118   | 1       | 232     | FTO   | \$2,953.17 |
| 21 x 21        | 26-022121   | 1       | 296     | FTO   | \$3,864.27 |
| 24 x 4         | 26-022404   | 1       | 155     | FTO   | \$2,216.21 |
| 24 x 6         | 26-022406   | 1       | 159     | FTO   | \$2,536.70 |
| 24 x 8         | 26-022408   | 1       | 184     | FTO   | \$2,735.76 |
| 24 x 10        | 26-022410   | 1       | 201     | FTO   | \$2,765.37 |
| 24 x 12        | 26-022412   | 1       | 224     | FTO   | \$2,823.58 |
| 24 x 15        | 26-022415   | 1       | 246     | FTO   | \$2,844.35 |
| 24 x 18        | 26-022418   | 1       | 284     | FTO   | \$3,995.11 |
| 24 x 21        | 26-022421   | 1       | 304     | FTO   | \$4,381.18 |
| 24 x 24        | 26-022424   | 1       | 281     | FTO   | \$4,817.14 |



| <b>STYLE LEGEND:</b>                        |  |
|---|--|
| A   | Assembled from Mold components (Stock)   |
| F   | Fabricated (Stock)   |
| FTO   | Fabricated To Order; Non-Returnable; Non-Cancelable; Non-Stock (2-4 day lead time) |
| NOTE: Stock items are subject to prior sale |  |

# HARCO PRICE LIST

## PVC SDR 26 Gasketed Sewer Fittings

| <b>TEE-WYE</b> |             |         |         |       |            |
|----------------|-------------|---------|---------|-------|------------|
| (G x G x G)    |             |         |         |       |            |
| SIZE           | PART NUMBER | CTN QTY | WT EACH | STYLE | LIST PRICE |
| 4 x 4          | 26-050404   | 1       | 3.9     | A     | \$45.01    |
| 6 x 4          | 26-050604   | 1       | 6.3     | A     | \$52.93    |
| 6 x 6          | 26-050606   | 1       | 10      | A     | \$69.38    |
| 8 x 4          | 26-050804   | 3       | 10      | M     | \$66.84    |
| 8 x 6          | 26-050806   | 3       | 11      | M     | \$76.42    |
| 8 x 8          | 26-050808   | 1       | 12      | F     | \$171.97   |
| 10 x 4         | 26-051004   | 1       | 19      | A     | \$197.49   |
| 10 x 6         | 26-051006   | 2       | 17      | M     | \$221.83   |
| 10 x 8         | 26-051008   | 1       | 28      | FTO   | \$343.65   |
| 10 x 10        | 26-051010   | 1       | 46      | FTO   | \$426.75   |
| 12 x 4         | 26-051204   | 1       | 26      | A     | \$246.22   |
| 12 x 6         | 26-051206   | 1       | 24      | M     | \$268.14   |
| 12 x 8         | 26-051208   | 1       | 39      | FTO   | \$544.65   |
| 12 x 10        | 26-051210   | 1       | 30      | FTO   | \$857.05   |
| 12 x 12        | 26-051212   | 1       | 63      | FTO   | \$968.97   |
| 15 x 4         | 26-051504   | 1       | 40      | FTO   | \$387.97   |
| 15 x 6         | 26-051506   | 1       | 48      | FTO   | \$421.98   |
| 15 x 8         | 26-051508   | 1       | 54      | FTO   | \$452.49   |
| 15 x 10        | 26-051510   | 1       | 46      | FTO   | \$692.77   |
| 15 x 12        | 26-051512   | 1       | 46      | FTO   | \$813.92   |
| 15 x 15        | 26-051515   | 1       | 46      | FTO   | \$1,061.52 |
| 18 x 4         | 26-051804   | 1       | 68      | FTO   | \$961.46   |
| 18 x 6         | 26-051806   | 1       | 76      | FTO   | \$978.95   |
| 18 x 8         | 26-051808   | 1       | 91      | FTO   | \$1,038.37 |
| 18 x 10        | 26-051810   | 1       | 103     | FTO   | \$1,385.51 |
| 18 x 12        | 26-051812   | 1       | 128     | FTO   | \$1,422.39 |
| 18 x 15        | 26-051815   | 1       | 154     | FTO   | \$1,517.21 |
| 18 x 18        | 26-051818   | 1       | 189     | FTO   | \$1,601.51 |
| 21 x 4         | 26-052104   | 1       | 108     | FTO   | \$1,469.13 |
| 21 x 6         | 26-052106   | 1       | 120     | FTO   | \$1,589.39 |
| 21 x 8         | 26-052108   | 1       | 136     | FTO   | \$1,943.63 |
| 21 x 10        | 26-052110   | 1       | 149     | FTO   | \$2,058.07 |
| 21 x 12        | 26-052112   | 1       | 176     | FTO   | \$2,200.97 |
| 21 x 15        | 26-052115   | 1       | 216     | FTO   | \$2,456.79 |
| 21 x 18        | 26-052118   | 1       | 265     | FTO   | \$2,788.66 |
| 21 x 21        | 26-052121   | 1       | 296     | FTO   | \$3,699.01 |



| <b>TEE-WYE</b> |             |         |         |       |            |
|----------------|-------------|---------|---------|-------|------------|
| (G x G x G)    |             |         |         |       |            |
| SIZE           | PART NUMBER | CTN QTY | WT EACH | STYLE | LIST PRICE |
| 24 x 4         | 26-052404   | 1       | 173     | FTO   | \$2,446.09 |
| 24 x 6         | 26-052406   | 1       | 180     | FTO   | \$2,591.77 |
| 24 x 8         | 26-052408   | 1       | 200     | FTO   | \$2,644.66 |
| 24 x 10        | 26-052410   | 1       | 180     | FTO   | \$2,950.00 |
| 24 x 12        | 26-052412   | 1       | 177     | FTO   | \$3,003.00 |
| 24 x 15        | 26-052415   | 1       | 181     | FTO   | \$3,120.53 |
| 24 x 18        | 26-052418   | 1       | 180     | FTO   | \$4,316.67 |
| 24 x 21        | 26-052421   | 1       | 182     | FTO   | \$4,952.31 |
| 24 x 24        | 26-052424   | 1       | 185     | FTO   | \$5,738.66 |



| <b>STYLE LEGEND:</b> |  |
|----------------------|--|
| A                    | Assembled from Mold components (Stock)   |
| F                    | Fabricated (Stock)   |
| FTO                  | Fabricated To Order; Non-Returnable; Non-Cancelable; Non-Stock (2-4 day lead time) |
| M                    | Molded; Gray Color (Stock)   |

NOTE: Stock items are subject to prior sale

## HARCO PRICE LIST

### PVC SDR 26 Gasketed Sewer Fittings

| <b>TEE-WYE</b> |             |         |         |       |            |
|----------------|-------------|---------|---------|-------|------------|
| (G x S x G)    |             |         |         |       |            |
| SIZE           | PART NUMBER | CTN QTY | WT EACH | STYLE | LIST PRICE |
| 4 x 4          | 26-060404   | 1       | 3.1     | A     | \$46.52    |
| 6 x 4          | 26-060604   | 1       | 7.0     | A     | \$60.57    |
| 6 x 6          | 26-060606   | 1       | 8.1     | A     | \$79.08    |
| 8 x 4          | 26-060804   | 1       | 10      | A     | \$70.85    |
| 8 x 6          | 26-060806   | 1       | 9.9     | A     | \$80.14    |
| 8 x 8          | 26-060808   | 1       | 14      | FTO   | \$171.98   |
| 10 x 4         | 26-061004   | 1       | 26      | A     | \$197.26   |
| 10 x 6         | 26-061006   | 1       | 25      | A     | \$221.58   |
| 10 x 8         | 26-061008   | 1       | 27      | FTO   | \$343.29   |
| 10 x 10        | 26-061010   | 1       | 34      | FTO   | \$608.46   |
| 12 x 4         | 26-061204   | 1       | 36      | A     | \$246.00   |
| 12 x 6         | 26-061206   | 1       | 35      | A     | \$267.82   |
| 12 x 8         | 26-061208   | 1       | 38      | FTO   | \$485.78   |
| 12 x 10        | 26-061210   | 1       | 46      | FTO   | \$753.35   |
| 12 x 12        | 26-061212   | 1       | 55      | FTO   | \$853.44   |
| 15 x 4         | 26-061504   | 1       | 39      | FTO   | \$387.55   |
| 15 x 6         | 26-061506   | 1       | 45      | FTO   | \$421.55   |
| 15 x 8         | 26-061508   | 1       | 57      | FTO   | \$452.02   |
| 15 x 10        | 26-061510   | 1       | 45      | FTO   | \$692.77   |
| 15 x 12        | 26-061512   | 1       | 45      | FTO   | \$813.92   |
| 15 x 15        | 26-061515   | 1       | 45      | FTO   | \$1,061.52 |
| 18 x 4         | 26-061804   | 1       | 70      | FTO   | \$961.33   |
| 18 x 6         | 26-061806   | 1       | 77      | FTO   | \$979.03   |
| 18 x 8         | 26-061808   | 1       | 88      | FTO   | \$1,037.75 |
| 18 x 10        | 26-061810   | 1       | 101     | FTO   | \$1,385.51 |
| 18 x 12        | 26-061812   | 1       | 127     | FTO   | \$1,422.39 |
| 18 x 15        | 26-061815   | 1       | 153     | FTO   | \$1,517.21 |
| 18 x 18        | 26-061818   | 1       | 188     | FTO   | \$1,601.51 |



| <b>TEE-WYE</b> |             |         |         |       |            |
|----------------|-------------|---------|---------|-------|------------|
| (G x S x G)    |             |         |         |       |            |
| SIZE           | PART NUMBER | CTN QTY | WT EACH | STYLE | LIST PRICE |
| 21 x 4         | 26-062104   | 1       | 100     | FTO   | \$1,470.38 |
| 21 x 6         | 26-062106   | 1       | 111     | FTO   | \$1,590.24 |
| 21 x 8         | 26-062108   | 1       | 131     | FTO   | \$2,037.34 |
| 21 x 10        | 26-062110   | 1       | 147     | FTO   | \$2,058.07 |
| 21 x 12        | 26-062112   | 1       | 174     | FTO   | \$2,200.97 |
| 21 x 15        | 26-062115   | 1       | 215     | FTO   | \$2,456.79 |
| 21 x 18        | 26-062118   | 1       | 263     | FTO   | \$2,788.66 |
| 21 x 21        | 26-062121   | 1       | 294     | FTO   | \$3,699.01 |
| 24 x 4         | 26-062404   | 1       | 146     | FTO   | \$2,445.26 |
| 24 x 6         | 26-062406   | 1       | 155     | FTO   | \$2,592.77 |
| 24 x 8         | 26-062408   | 1       | 174     | FTO   | \$2,645.77 |
| 24 x 10        | 26-062410   | 1       | 178     | FTO   | \$2,950.00 |
| 24 x 12        | 26-062412   | 1       | 176     | FTO   | \$3,003.00 |
| 24 x 15        | 26-062415   | 1       | 180     | FTO   | \$3,120.53 |
| 24 x 18        | 26-062418   | 1       | 178     | FTO   | \$4,316.67 |
| 24 x 21        | 26-062421   | 1       | 184     | FTO   | \$4,669.27 |
| 24 x 24        | 26-062424   | 1       | 231     | FTO   | \$5,738.66 |

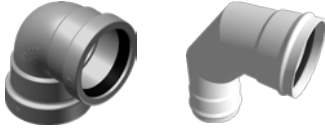


| <b>STYLE LEGEND:</b>                        |  |
|---|--|
| A   | Assembled from Mold components (Stock)   |
| FTO   | Fabricated To Order; Non-Returnable; Non-Cancelable; Non-Stock (2-4 day lead time) |
| NOTE: Stock items are subject to prior sale |  |

# HARCO PRICE LIST

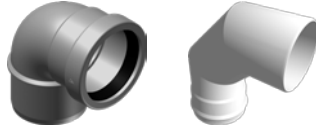
## PVC SDR 26 Gasketed Sewer Fittings

**90° BEND**  
(G x G)




| SIZE | PART NUMBER | CTN QTY | WT EACH | STYLE | LIST PRICE |
|------|-------------|---------|---------|-------|------------|
| 4    | 26-1804     | 1       | 4.9     | F     | \$29.17    |
| 6    | 26-1806     | 12      | 4.2     | M     | \$62.76    |
| 8    | 26-1808     | 4       | 8.8     | M     | \$145.42   |
| 10   | 26-1810     | 1       | 25      | F     | \$231.41   |
| 12   | 26-1812     | 1       | 41      | F     | \$305.73   |
| 15   | 26-1815     | 1       | 65      | FTO   | \$564.67   |
| 18   | 26-1818     | 1       | 137     | FTO   | \$1,063.18 |
| 21   | 26-1821     | 1       | 224     | FTO   | \$1,969.21 |
| 24   | 26-1824     | 1       | 323     | FTO   | \$2,632.96 |

**90° BEND**  
(G x S)



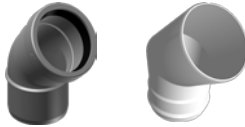
| SIZE | PART NUMBER | CTN QTY | WT EACH | STYLE | LIST PRICE |
|------|-------------|---------|---------|-------|------------|
| 4    | 26-1904     | 1       | 5.0     | F     | \$29.17    |
| 6    | 26-1906     | 12      | 3.6     | M     | \$80.07    |
| 8    | 26-1908     | 4       | 8.8     | M     | \$163.67   |
| 10   | 26-1910     | 1       | 17      | FTO   | \$231.41   |
| 12   | 26-1912     | 1       | 19      | FTO   | \$305.73   |
| 15   | 26-1915     | 1       | 65      | FTO   | \$564.67   |
| 18   | 26-1918     | 1       | 138     | FTO   | \$982.67   |
| 21   | 26-1921     | 1       | 211     | FTO   | \$1,780.42 |
| 24   | 26-1924     | 1       | 316     | FTO   | \$2,198.39 |

**45° BEND**  
(G x G)



| SIZE | PART NUMBER | CTN QTY | WT EACH | STYLE | LIST PRICE |
|------|-------------|---------|---------|-------|------------|
| 4    | 26-2204     | 24      | 1.4     | M     | \$16.42    |
| 6    | 26-2206     | 12      | 3.4     | M     | \$30.14    |
| 8    | 26-2208     | 4       | 8.3     | M     | \$72.64    |
| 10   | 26-2210     | 1       | 21      | F     | \$147.60   |
| 12   | 26-2212     | 1       | 28      | F     | \$229.26   |
| 15   | 26-2215     | 1       | 48      | FTO   | \$460.22   |
| 18   | 26-2218     | 1       | 92      | FTO   | \$819.81   |
| 21   | 26-2221     | 1       | 158     | FTO   | \$1,497.21 |
| 24   | 26-2224     | 1       | 227     | FTO   | \$2,044.05 |

**45° BEND**  
(G x S)



| SIZE | PART NUMBER | CTN QTY | WT EACH | STYLE | LIST PRICE |
|------|-------------|---------|---------|-------|------------|
| 4    | 26-2304     | 24      | 1.0     | M     | \$15.16    |
| 6    | 26-2306     | 12      | 2.8     | M     | \$22.26    |
| 8    | 26-2308     | 4       | 7.3     | M     | \$72.80    |
| 10   | 26-2310     | 1       | 18      | F     | \$147.60   |
| 12   | 26-2312     | 1       | 17      | F     | \$229.26   |
| 15   | 26-2315     | 1       | 25      | FTO   | \$460.22   |
| 18   | 26-2318     | 1       | 91      | FTO   | \$675.58   |
| 21   | 26-2321     | 1       | 141     | FTO   | \$1,293.27 |
| 24   | 26-2324     | 1       | 207     | FTO   | \$1,861.86 |

| STYLE LEGEND: |  |
|---------------|--|
| F             | Fabricated (Stock)   |
| FTO           | Fabricated To Order; Non-Returnable; Non-Cancelable; Non-Stock (2-4 day lead time) |
| M             | Molded; Gray Color (Stock)   |

NOTE: Stock items are subject to prior sale

## HARCO PRICE LIST

### PVC SDR 26 Gasketed Sewer Fittings

#### 22½° BEND

(G x G)



| SIZE | PART NUMBER | CTN QTY | WT EACH | STYLE | LIST PRICE |
|------|-------------|---------|---------|-------|------------|
| 4    | 26-2404     | 24      | 1.4     | M     | \$21.79    |
| 6    | 26-2406     | 12      | 3.2     | M     | \$41.09    |
| 8    | 26-2408     | 1       | 9.0     | F     | \$73.03    |
| 10   | 26-2410     | 1       | 17      | FTO   | \$161.84   |
| 12   | 26-2412     | 1       | 28      | FTO   | \$217.53   |
| 15   | 26-2415     | 1       | 49      | FTO   | \$519.48   |
| 18   | 26-2418     | 1       | 93      | FTO   | \$845.09   |
| 21   | 26-2421     | 1       | 139     | FTO   | \$1,293.16 |
| 24   | 26-2424     | 1       | 220     | FTO   | \$1,861.99 |

#### 22½° BEND

(G x S)



| SIZE | PART NUMBER | CTN QTY | WT EACH | STYLE | LIST PRICE |
|------|-------------|---------|---------|-------|------------|
| 4    | 26-2504     | 24      | 1.0     | M     | \$20.86    |
| 6    | 26-2506     | 12      | 2.1     | M     | \$39.35    |
| 8    | 26-2508     | 4       | 11.0    | FTO   | \$73.02    |
| 10   | 26-2510     | 1       | 18      | FTO   | \$161.84   |
| 12   | 26-2512     | 1       | 25      | FTO   | \$217.53   |
| 15   | 26-2515     | 1       | 38      | FTO   | \$519.48   |
| 18   | 26-2518     | 1       | 86      | FTO   | \$845.09   |
| 21   | 26-2521     | 1       | 131     | FTO   | \$1,293.16 |
| 24   | 26-2524     | 1       | 189     | FTO   | \$1,861.97 |

#### 11¼° BEND

(G x G)



| SIZE | PART NUMBER | CTN QTY | WT EACH | STYLE | LIST PRICE |
|------|-------------|---------|---------|-------|------------|
| 4    | 26-2804     | 1       | 1.3     | FTO   | \$28.95    |
| 6    | 26-2806     | 1       | 3.5     | FTO   | \$39.96    |
| 8    | 26-2808     | 1       | 6.6     | FTO   | \$91.40    |
| 10   | 26-2810     | 1       | 12      | FTO   | \$161.61   |
| 12   | 26-2812     | 1       | 17      | FTO   | \$217.96   |
| 15   | 26-2815     | 1       | 40      | FTO   | \$516.66   |
| 18   | 26-2818     | 1       | 87      | FTO   | \$845.08   |
| 21   | 26-2821     | 1       | 130     | FTO   | \$1,293.16 |
| 24   | 26-2824     | 1       | 211     | FTO   | \$1,861.99 |

#### 11¼° BEND

(G x S)



| SIZE | PART NUMBER | CTN QTY | WT EACH | STYLE | LIST PRICE |
|------|-------------|---------|---------|-------|------------|
| 4    | 26-2904     | 1       | 1.1     | FTO   | \$27.68    |
| 6    | 26-2906     | 1       | 2.9     | FTO   | \$37.94    |
| 8    | 26-2908     | 1       | 6.0     | FTO   | \$91.40    |
| 10   | 26-2910     | 1       | 10      | FTO   | \$161.61   |
| 12   | 26-2912     | 1       | 23      | FTO   | \$217.24   |
| 15   | 26-2915     | 1       | 38      | FTO   | \$519.92   |
| 18   | 26-2918     | 1       | 82      | FTO   | \$845.08   |
| 21   | 26-2921     | 1       | 120     | FTO   | \$1,293.16 |
| 24   | 26-2924     | 1       | 174     | FTO   | \$1,861.97 |

#### STYLE LEGEND:

|     |  |
|-----|--|
| F   | Fabricated (Stock)   |
| FTO | Fabricated To Order; Non-Returnable; Non-Cancelable; Non-Stock (2-4 day lead time) |
| M   | Molded; Gray Color (Stock)   |

NOTE: Stock items are subject to prior sale

# HARCO PRICE LIST

## PVC SDR 26 Gasketed Sewer Fittings

| <b>TEE</b>  |             |         |         |       |            |
|-------------|-------------|---------|---------|-------|------------|
| (G x G x G) |             |         |         |       |            |
| SIZE        | PART NUMBER | CTN QTY | WT EACH | STYLE | LIST PRICE |
| 4 x 4       | 26-120404   | 1       | 4.0     | F     | \$38.80    |
| 6 x 4       | 26-120604   | 1       | 7.0     | F     | \$48.03    |
| 6 x 6       | 26-120606   | 1       | 1.0     | F     | \$53.10    |
| 8 x 4       | 26-120804   | 4       | 8.8     | M     | \$66.84    |
| 8 x 4       | 26-650804   | 4       | 11      | M †   | \$66.84    |
| 8 x 6       | 26-120806   | 3       | 9.8     | M     | \$74.56    |
| 8 x 8       | 26-120808   | 1       | 14      | F     | \$110.34   |
| 10 x 4      | 26-121004   | 1       | 17      | F     | \$167.41   |
| 10 x 6      | 26-121006   | 1       | 17      | FTO   | \$170.63   |
| 10 x 8      | 26-121008   | 1       | 22      | FTO   | \$259.24   |
| 10 x 10     | 26-121010   | 1       | 14      | FTO   | \$282.57   |
| 12 x 4      | 26-121204   | 1       | 27      | FTO   | \$213.62   |
| 12 x 6      | 26-121206   | 1       | 28      | FTO   | \$223.73   |
| 12 x 8      | 26-121208   | 1       | 31      | FTO   | \$303.71   |
| 12 x 10     | 26-121210   | 1       | 37      | FTO   | \$362.73   |
| 12 x 12     | 26-121212   | 1       | 42      | FTO   | \$391.55   |
| 15 x 4      | 26-121504   | 1       | 40      | FTO   | \$317.33   |
| 15 x 6      | 26-121506   | 1       | 42      | FTO   | \$349.71   |
| 15 x 8      | 26-121508   | 1       | 46      | FTO   | \$368.25   |
| 15 x 10     | 26-121510   | 1       | 53      | FTO   | \$419.78   |
| 15 x 12     | 26-121512   | 1       | 57      | FTO   | \$494.52   |
| 15 x 15     | 26-121515   | 1       | 73      | FTO   | \$642.49   |
| 18 x 4      | 26-121804   | 1       | 65      | FTO   | \$912.12   |
| 18 x 6      | 26-121806   | 1       | 67      | FTO   | \$943.07   |
| 18 x 8      | 26-121808   | 1       | 73      | FTO   | \$985.26   |
| 18 x 10     | 26-121810   | 1       | 80      | FTO   | \$1,023.16 |
| 18 x 12     | 26-121812   | 1       | 95      | FTO   | \$1,051.17 |
| 18 x 15     | 26-121815   | 1       | 109     | FTO   | \$1,119.48 |
| 18 x 18     | 26-121818   | 1       | 131     | FTO   | \$1,182.16 |



| <b>TEE</b>  |             |         |         |       |            |
|-------------|-------------|---------|---------|-------|------------|
| (G x G x G) |             |         |         |       |            |
| SIZE        | PART NUMBER | CTN QTY | WT EACH | STYLE | LIST PRICE |
| 21 x 4      | 26-122104   | 1       | 110     | FTO   | \$1,383.68 |
| 21 x 6      | 26-122106   | 1       | 114     | FTO   | \$1,484.30 |
| 21 x 8      | 26-122108   | 1       | 120     | FTO   | \$1,594.40 |
| 21 x 10     | 26-122110   | 1       | 134     | FTO   | \$1,713.16 |
| 21 x 12     | 26-122112   | 1       | 134     | FTO   | \$1,836.27 |
| 21 x 15     | 26-122115   | 1       | 158     | FTO   | \$2,049.53 |
| 21 x 18     | 26-122118   | 1       | 179     | FTO   | \$2,325.69 |
| 21 x 21     | 26-122121   | 1       | 210     | FTO   | \$3,082.71 |
| 24 x 4      | 26-122404   | 1       | 163     | FTO   | \$2,183.30 |
| 24 x 6      | 26-122406   | 1       | 170     | FTO   | \$2,647.44 |
| 24 x 8      | 26-122408   | 1       | 178     | FTO   | \$2,689.35 |
| 24 x 10     | 26-122410   | 1       | 180     | FTO   | \$2,808.18 |
| 24 x 12     | 26-122412   | 1       | 189     | FTO   | \$2,859.48 |
| 24 x 15     | 26-122415   | 1       | 226     | FTO   | \$2,971.57 |
| 24 x 18     | 26-122418   | 1       | 238     | FTO   | \$4,112.19 |
| 24 x 21     | 26-122421   | 1       | 265     | FTO   | \$4,448.79 |
| 24 x 24     | 26-122424   | 1       | 316     | FTO   | \$5,466.43 |



| <b>STYLE LEGEND:</b> |  |
|----------------------|--|
| F                    | Fabricated (Stock)   |
| FTO                  | Fabricated To Order; Non-Returnable; Non-Cancelable; Non-Stock (2-4 day lead time) |
| M                    | Molded; Gray Color (Stock)   |
| †                    | DWV Solvent Weld Outlet  |

NOTE: Stock items are subject to prior sale

## HARCO PRICE LIST

### PVC SDR 26 Gasketed Sewer Fittings

| <b>TEE</b>  |             |         |         |       |            |
|-------------|-------------|---------|---------|-------|------------|
| (G x S x G) |             |         |         |       |            |
| SIZE        | PART NUMBER | CTN QTY | WT EACH | STYLE | LIST PRICE |
| 4 x 4       | 26-110404   | 1       | 4.0     | FTO   | \$40.74    |
| 6 x 4       | 26-110604   | 1       | 7.0     | FTO   | \$55.58    |
| 6 x 6       | 26-110606   | 1       | 7.0     | FTO   | \$79.18    |
| 8 x 4       | 26-110804   | 1       | 7.3     | A     | \$95.42    |
| 8 x 6       | 26-110806   | 1       | 8.3     | A     | \$110.67   |
| 8 x 8       | 26-110808   | 1       | 13      | FTO   | \$118.55   |
| 10 x 4      | 26-111004   | 1       | 16      | FTO   | \$167.22   |
| 10 x 6      | 26-111006   | 1       | 16      | FTO   | \$170.43   |
| 10 x 8      | 26-111008   | 1       | 21      | FTO   | \$258.96   |
| 10 x 10     | 26-111010   | 1       | 13      | FTO   | \$282.27   |
| 12 x 4      | 26-111204   | 1       | 26      | FTO   | \$213.39   |
| 12 x 6      | 26-111206   | 1       | 27      | FTO   | \$223.51   |
| 12 x 8      | 26-111208   | 1       | 30      | FTO   | \$302.50   |
| 12 x 10     | 26-111210   | 1       | 36      | FTO   | \$362.36   |
| 12 x 12     | 26-111212   | 1       | 41      | FTO   | \$391.13   |
| 15 x 4      | 26-111504   | 1       | 39      | FTO   | \$316.96   |
| 15 x 6      | 26-111506   | 1       | 41      | FTO   | \$349.33   |
| 15 x 8      | 26-111508   | 1       | 45      | FTO   | \$367.90   |
| 15 x 10     | 26-111510   | 1       | 52      | FTO   | \$419.36   |
| 15 x 12     | 26-111512   | 1       | 56      | FTO   | \$494.15   |
| 15 x 15     | 26-111515   | 1       | 72      | FTO   | \$641.83   |
| 18 x 4      | 26-111804   | 1       | 63      | FTO   | \$912.12   |
| 18 x 6      | 26-111806   | 1       | 66      | FTO   | \$943.07   |
| 18 x 8      | 26-111808   | 1       | 71      | FTO   | \$985.27   |
| 18 x 10     | 26-111810   | 1       | 79      | FTO   | \$1,023.16 |
| 18 x 12     | 26-111812   | 1       | 93      | FTO   | \$1,051.17 |
| 18 x 15     | 26-111815   | 1       | 107     | FTO   | \$1,119.48 |
| 18 x 18     | 26-111818   | 1       | 130     | FTO   | \$1,182.19 |



| <b>TEE</b>  |             |         |         |       |            |
|-------------|-------------|---------|---------|-------|------------|
| (G x S x G) |             |         |         |       |            |
| SIZE        | PART NUMBER | CTN QTY | WT EACH | STYLE | LIST PRICE |
| 21 x 4      | 26-112104   | 1       | 109     | FTO   | \$1,383.68 |
| 21 x 6      | 26-112106   | 1       | 112     | FTO   | \$1,484.30 |
| 21 x 8      | 26-112108   | 1       | 119     | FTO   | \$1,594.40 |
| 21 x 10     | 26-112110   | 1       | 132     | FTO   | \$1,713.16 |
| 21 x 12     | 26-112112   | 1       | 132     | FTO   | \$1,836.27 |
| 21 x 15     | 26-112115   | 1       | 156     | FTO   | \$2,049.53 |
| 21 x 18     | 26-112118   | 1       | 177     | FTO   | \$2,325.69 |
| 21 x 21     | 26-112121   | 1       | 208     | FTO   | \$3,082.71 |
| 24 x 4      | 26-112404   | 1       | 161     | FTO   | \$2,183.30 |
| 24 x 6      | 26-112406   | 1       | 169     | FTO   | \$2,647.44 |
| 24 x 8      | 26-112408   | 1       | 177     | FTO   | \$2,689.35 |
| 24 x 10     | 26-112410   | 1       | 178     | FTO   | \$2,808.18 |
| 24 x 12     | 26-112412   | 1       | 188     | FTO   | \$2,859.48 |
| 24 x 15     | 26-112415   | 1       | 224     | FTO   | \$2,971.57 |
| 24 x 18     | 26-112418   | 1       | 237     | FTO   | \$4,112.19 |
| 24 x 21     | 26-112421   | 1       | 264     | FTO   | \$4,448.79 |
| 24 x 24     | 26-112424   | 1       | 315     | FTO   | \$5,466.43 |



| <b>STYLE LEGEND:</b>                        |  |
|---|--|
| A   | Assembled from Mold components (Stock)   |
| FTO   | Fabricated To Order; Non-Returnable; Non-Cancelable; Non-Stock (2-4 day lead time) |
| NOTE: Stock items are subject to prior sale |  |



## HARCO PRICE LIST

### PVC SDR 26 Gasketed Sewer Fittings

| <b>ECCENTRIC INCREASER COUPLING</b> |             |         |         |       |            |
|-------------------------------------|-------------|---------|---------|-------|------------|
| <b>(G x G)</b>                      |             |         |         |       |            |
| SIZE                                | PART NUMBER | CTN QTY | WT EACH | STYLE | LIST PRICE |
| 4 x 6                               | 26-140406   | 1       | 4.5     | FTO   | \$34.19    |
| 4 x 8                               | 26-140408   | 1       | 10      | FTO   | \$121.78   |
| 4 x 10                              | 26-140410   | 1       | 14      | FTO   | \$141.43   |
| 4 x 12                              | 26-140412   | 1       | 20      | FTO   | \$188.37   |
| 4 x 15                              | 26-140415   | 1       | 30      | FTO   | \$316.38   |
| 4 x 18                              | 26-140418   | 1       | 45      | FTO   | \$418.29   |
| 4 x 21                              | 26-140421   | 1       | 82      | FTO   | \$650.66   |
| 4 x 24                              | 26-140424   | 1       | 125     | FTO   | \$1,356.00 |
| 6 x 8                               | 26-140608   | 1       | 5.0     | FTO   | \$74.69    |
| 6 x 10                              | 26-140610   | 1       | 14      | FTO   | \$147.42   |
| 6 x 12                              | 26-140612   | 1       | 20      | FTO   | \$321.02   |
| 6 x 15                              | 26-140615   | 1       | 31      | FTO   | \$410.04   |
| 6 x 18                              | 26-140618   | 1       | 45      | FTO   | \$425.56   |
| 6 x 21                              | 26-140621   | 1       | 88      | FTO   | \$657.42   |
| 6 x 24                              | 26-140624   | 1       | 136     | FTO   | \$1,369.44 |
| 8 x 10                              | 26-140810   | 1       | 8.2     | FTO   | \$171.02   |
| 8 x 12                              | 26-140812   | 1       | 23      | FTO   | \$228.10   |
| 8 x 15                              | 26-140815   | 1       | 34      | FTO   | \$348.09   |
| 8 x 18                              | 26-140818   | 1       | 50      | FTO   | \$431.83   |
| 8 x 21                              | 26-140821   | 1       | 84      | FTO   | \$666.75   |
| 8 x 24                              | 26-140824   | 1       | 139     | FTO   | \$1,385.19 |
| 10 x 12                             | 26-141012   | 1       | 13      | FTO   | \$264.39   |
| 10 x 15                             | 26-141015   | 1       | 38      | FTO   | \$383.66   |
| 10 x 18                             | 26-141018   | 1       | 53      | FTO   | \$447.00   |
| 10 x 21                             | 26-141021   | 1       | 92      | FTO   | \$675.27   |
| 10 x 24                             | 26-141024   | 1       | 130     | FTO   | \$1,392.30 |



| <b>ECCENTRIC INCREASER COUPLING</b> |             |         |         |       |            |
|-------------------------------------|-------------|---------|---------|-------|------------|
| <b>(G x G)</b>                      |             |         |         |       |            |
| SIZE                                | PART NUMBER | CTN QTY | WT EACH | STYLE | LIST PRICE |
| 12 x 15                             | 26-141215   | 1       | 17      | FTO   | \$417.19   |
| 12 x 18                             | 26-141218   | 1       | 52      | FTO   | \$456.54   |
| 12 x 21                             | 26-141221   | 1       | 97      | FTO   | \$710.62   |
| 12 x 24                             | 26-141224   | 1       | 133     | FTO   | \$1,435.57 |
| 15 x 18                             | 26-141518   | 1       | 60      | FTO   | \$475.49   |
| 15 x 21                             | 26-141521   | 1       | 102     | FTO   | \$820.85   |
| 15 x 24                             | 26-141524   | 1       | 148     | FTO   | \$1,471.32 |
| 18 x 21                             | 26-141821   | 1       | 114     | FTO   | \$884.43   |
| 18 x 24                             | 26-141824   | 1       | 145     | FTO   | \$1,550.31 |
| 21 x 24                             | 26-142124   | 1       | 178     | FTO   | \$1,681.60 |



| <b>STYLE LEGEND:</b> |  |
|----------------------|--|
| FTO                  | Fabricated To Order; Non-Returnable; Non-Cancelable; Non-Stock (2-4 day lead time) |

## HARCO PRICE LIST

### PVC SDR 26 Gasketed Sewer Fittings

| <b>ECCENTRIC INCREASER</b> |             |         |         |       |            |
|----------------------------|-------------|---------|---------|-------|------------|
| (G x S)                    |             |         |         |       |            |
| SIZE                       | PART NUMBER | CTN QTY | WT EACH | STYLE | LIST PRICE |
| 4 x 6                      | 26-150406   | 1       | 19      | FTO   | \$36.88    |
| 4 x 8                      | 26-150408   | 1       | 27      | FTO   | \$78.47    |
| 4 x 10                     | 26-150410   | 1       | 13      | FTO   | \$155.71   |
| 4 x 12                     | 26-150412   | 1       | 16      | FTO   | \$188.61   |
| 4 x 15                     | 26-150415   | 1       | 26      | FTO   | \$316.38   |
| 4 x 18                     | 26-150418   | 1       | 44      | FTO   | \$390.82   |
| 4 x 21                     | 26-150421   | 1       | 74      | FTO   | \$540.28   |
| 4 x 24                     | 26-150424   | 1       | 101     | FTO   | \$1,198.90 |
| 6 x 8                      | 26-150608   | 1       | 21      | FTO   | \$133.99   |
| 6 x 10                     | 26-150610   | 1       | 13      | FTO   | \$147.42   |
| 6 x 12                     | 26-150612   | 1       | 19      | FTO   | \$198.02   |
| 6 x 15                     | 26-150615   | 1       | 28      | FTO   | \$321.02   |
| 6 x 18                     | 26-150618   | 1       | 43      | FTO   | \$432.85   |
| 6 x 21                     | 26-150621   | 1       | 78      | FTO   | \$591.31   |
| 6 x 24                     | 26-150624   | 1       | 106     | FTO   | \$1,213.12 |
| 8 x 10                     | 26-150810   | 1       | 16      | FTO   | \$171.02   |
| 8 x 12                     | 26-150812   | 1       | 12      | FTO   | \$221.32   |
| 8 x 15                     | 26-150815   | 1       | 30      | FTO   | \$348.10   |
| 8 x 18                     | 26-150818   | 1       | 43      | FTO   | \$443.39   |
| 8 x 21                     | 26-150821   | 1       | 77      | FTO   | \$594.87   |
| 8 x 24                     | 26-150824   | 1       | 100     | FTO   | \$1,228.26 |
| 10 x 12                    | 26-151012   | 1       | 16      | FTO   | \$257.40   |
| 10 x 15                    | 26-151015   | 1       | 35      | FTO   | \$383.66   |
| 10 x 18                    | 26-151018   | 1       | 49      | FTO   | \$449.63   |
| 10 x 21                    | 26-151021   | 1       | 81      | FTO   | \$601.94   |
| 10 x 24                    | 26-151024   | 1       | 112     | FTO   | \$1,256.94 |



| <b>ECCENTRIC INCREASER</b> |             |         |         |       |            |
|----------------------------|-------------|---------|---------|-------|------------|
| (G x S)                    |             |         |         |       |            |
| SIZE                       | PART NUMBER | CTN QTY | WT EACH | STYLE | LIST PRICE |
| 12 x 15                    | 26-151215   | 1       | 36      | FTO   | \$417.19   |
| 12 x 18                    | 26-151218   | 1       | 51      | FTO   | \$455.97   |
| 12 x 21                    | 26-151221   | 1       | 82      | FTO   | \$616.33   |
| 12 x 24                    | 26-151224   | 1       | 113     | FTO   | \$1,273.25 |
| 15 x 18                    | 26-151518   | 1       | 62      | FTO   | \$459.74   |
| 15 x 21                    | 26-151521   | 1       | 92      | FTO   | \$640.09   |
| 15 x 24                    | 26-151524   | 1       | 121     | FTO   | \$1,309.50 |
| 18 x 21                    | 26-151821   | 1       | 108     | FTO   | \$694.05   |
| 18 x 24                    | 26-151824   | 1       | 131     | FTO   | \$1,366.70 |
| 21 x 24                    | 26-152124   | 1       | 147     | FTO   | \$1,606.38 |

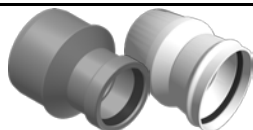


| <b>STYLE LEGEND:</b> |  |
|----------------------|--|
| FTO                  | Fabricated To Order; Non-Returnable; Non-Cancelable; Non-Stock (2-4 day lead time) |

# HARCO PRICE LIST

## PVC SDR 26 Gasketed Sewer Fittings

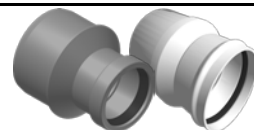
### CONCENTRIC INCREASER



(G x S)

| SIZE    | PART NUMBER | CTN QTY | WT EACH | STYLE | LIST PRICE |
|---------|-------------|---------|---------|-------|------------|
| 4 x 6   | 26-160406   | 12      | 2.6     | M     | \$31.12    |
| 4 x 8   | 26-160408   | 1       | 7.3     | FTO   | \$59.53    |
| 4 x 10  | 26-160410   | 1       | 11.0    | FTO   | \$124.58   |
| 4 x 12  | 26-160412   | 1       | 16      | FTO   | \$188.61   |
| 4 x 15  | 26-160415   | 1       | 26      | FTO   | \$316.76   |
| 4 x 18  | 26-160418   | 1       | 44      | FTO   | \$390.82   |
| 4 x 21  | 26-160421   | 1       | 89      | FTO   | \$540.28   |
| 4 x 24  | 26-160424   | 1       | 128     | FTO   | \$1,198.90 |
| 6 x 8   | 26-160608   | 1       | 8.3     | FTO   | \$62.45    |
| 6 x 10  | 26-160610   | 1       | 12      | FTO   | \$147.65   |
| 6 x 12  | 26-160612   | 1       | 18      | FTO   | \$198.24   |
| 6 x 15  | 26-160615   | 1       | 29      | FTO   | \$321.43   |
| 6 x 18  | 26-160618   | 1       | 45      | FTO   | \$432.88   |
| 6 x 21  | 26-160621   | 1       | 82      | FTO   | \$591.31   |
| 6 x 24  | 26-160624   | 1       | 128     | FTO   | \$1,213.12 |
| 8 x 10  | 26-160810   | 1       | 12      | FTO   | \$171.22   |
| 8 x 12  | 26-160812   | 1       | 18      | FTO   | \$228.39   |
| 8 x 15  | 26-160815   | 1       | 28      | FTO   | \$348.52   |
| 8 x 18  | 26-160818   | 1       | 32      | FTO   | \$443.39   |
| 8 x 21  | 26-160821   | 1       | 91      | FTO   | \$594.87   |
| 8 x 24  | 26-160824   | 1       | 136     | FTO   | \$1,228.26 |
| 10 x 12 | 26-161012   | 1       | 20      | FTO   | \$264.68   |
| 10 x 15 | 26-161015   | 1       | 31      | FTO   | \$384.10   |
| 10 x 18 | 26-161018   | 1       | 49      | FTO   | \$449.66   |
| 10 x 21 | 26-161021   | 1       | 91      | FTO   | \$601.94   |
| 10 x 24 | 26-161024   | 1       | 131     | FTO   | \$1,256.94 |

### CONCENTRIC INCREASER



(G x S)

| SIZE    | PART NUMBER | CTN QTY | WT EACH | STYLE | LIST PRICE |
|---------|-------------|---------|---------|-------|------------|
| 12 x 15 | 26-161215   | 1       | 31      | FTO   | \$417.69   |
| 12 x 18 | 26-161218   | 1       | 53      | FTO   | \$455.97   |
| 12 x 21 | 26-161221   | 1       | 95      | FTO   | \$616.33   |
| 12 x 24 | 26-161224   | 1       | 141     | FTO   | \$1,273.25 |
| 15 x 18 | 26-161518   | 1       | 61      | FTO   | \$459.74   |
| 15 x 21 | 26-161521   | 1       | 104     | FTO   | \$640.09   |
| 15 x 24 | 26-161524   | 1       | 146     | FTO   | \$1,309.50 |
| 18 x 21 | 26-161821   | 1       | 116     | FTO   | \$694.05   |
| 18 x 24 | 26-161824   | 1       | 146     | FTO   | \$1,366.70 |
| 21 x 24 | 26-162124   | 1       | 189     | FTO   | \$1,606.40 |

#### STYLE LEGEND:

|     |  |
|-----|--|
| FTO | Fabricated To Order; Non-Returnable; Non-Cancelable; Non-Stock (2-4 day lead time) |
| M   | Molded; Gray Color (Stock)   |

NOTE: Stock items are subject to prior sale

## HARCO PRICE LIST

### PVC SDR 26 Gasketed Sewer Fittings

#### CONCENTRIC INCREASER COUPLING



(G x G)

| SIZE    | PART NUMBER | CTN QTY | WT EACH | STYLE | LIST PRICE |
|---------|-------------|---------|---------|-------|------------|
| 4 x 6   | 26-170406   | 1       | 4.6     | A     | \$82.26    |
| 4 x 8   | 26-170408   | 1       | 10      | FTO   | \$120.79   |
| 4 x 10  | 26-170410   | 1       | 14      | FTO   | \$124.50   |
| 4 x 12  | 26-170412   | 1       | 20      | FTO   | \$188.37   |
| 4 x 15  | 26-170415   | 1       | 29      | FTO   | \$316.38   |
| 4 x 18  | 26-170418   | 1       | 45      | FTO   | \$418.29   |
| 4 x 21  | 26-170421   | 1       | 82      | FTO   | \$650.66   |
| 4 x 24  | 26-170424   | 1       | 134     | FTO   | \$1,356.00 |
| 6 x 8   | 26-170608   | 1       | 14      | A     | \$123.71   |
| 6 x 10  | 26-170610   | 1       | 14      | FTO   | \$147.42   |
| 6 x 12  | 26-170612   | 1       | 20      | FTO   | \$198.02   |
| 6 x 15  | 26-170615   | 1       | 32      | FTO   | \$410.06   |
| 6 x 18  | 26-170618   | 1       | 47      | FTO   | \$425.55   |
| 6 x 21  | 26-170621   | 1       | 87      | FTO   | \$657.42   |
| 6 x 24  | 26-170624   | 1       | 135     | FTO   | \$1,369.44 |
| 8 x 10  | 26-170810   | 1       | 8.4     | FTO   | \$171.02   |
| 8 x 12  | 26-170812   | 1       | 24      | FTO   | \$228.10   |
| 8 x 15  | 26-170815   | 1       | 33      | FTO   | \$348.08   |
| 8 x 18  | 26-170818   | 1       | 48      | FTO   | \$431.85   |
| 8 x 21  | 26-170821   | 1       | 92      | FTO   | \$666.75   |
| 8 x 24  | 26-170824   | 1       | 128     | FTO   | \$1,385.19 |
| 10 x 12 | 26-171012   | 1       | 13      | FTO   | \$264.39   |
| 10 x 15 | 26-171015   | 1       | 35      | FTO   | \$383.66   |
| 10 x 18 | 26-171018   | 1       | 51      | FTO   | \$447.00   |
| 10 x 21 | 26-171021   | 1       | 94      | FTO   | \$675.27   |
| 10 x 24 | 26-171024   | 1       | 143     | FTO   | \$1,392.30 |

#### CONCENTRIC INCREASER COUPLING



(G x G)

| SIZE    | PART NUMBER | CTN QTY | WT EACH | STYLE | LIST PRICE |
|---------|-------------|---------|---------|-------|------------|
| 12 x 15 | 26-171215   | 1       | 18      | FTO   | \$417.18   |
| 12 x 18 | 26-171218   | 1       | 53      | FTO   | \$456.54   |
| 12 x 21 | 26-171221   | 1       | 93      | FTO   | \$710.62   |
| 12 x 24 | 26-171224   | 1       | 146     | FTO   | \$1,435.57 |
| 15 x 18 | 26-171518   | 1       | 64      | FTO   | \$475.49   |
| 15 x 21 | 26-171521   | 1       | 103     | FTO   | \$820.85   |
| 15 x 24 | 26-171524   | 1       | 153     | FTO   | \$1,471.32 |
| 18 x 21 | 26-171821   | 1       | 117     | FTO   | \$884.43   |
| 18 x 24 | 26-171824   | 1       | 153     | FTO   | \$1,550.31 |
| 21 x 24 | 26-172124   | 1       | 189     | FTO   | \$1,681.60 |

#### STYLE LEGEND:

|     |  |
|-----|--|
| A   | Assembled from Mold components (Stock)   |
| FTO | Fabricated To Order; Non-Returnable; Non-Cancelable; Non-Stock (2-4 day lead time) |

NOTE: Stock items are subject to prior sale

# HARCO PRICE LIST

## PVC SDR 26 Gasketed Sewer Fittings

| <b>DOUBLE WYE</b> |             |         |         |       |            |
|-------------------|-------------|---------|---------|-------|------------|
| (G x G x G x G)   |             |         |         |       |            |
| SIZE              | PART NUMBER | CTN QTY | WT EACH | STYLE | LIST PRICE |
| 4 x 4             | 26-040404   | 1       | 4.7     | FTO   | \$69.60    |
| 6 x 4             | 26-040604   | 4       | 5.3     | M     | \$80.45    |
| 6 x 6             | 26-040606   | 2       | 12      | M     | \$107.14   |
| 8 x 4             | 26-040804   | 1       | 13      | FTO   | \$115.89   |
| 8 x 6             | 26-040806   | 1       | 16      | FTO   | \$138.68   |
| 8 x 8             | 26-040808   | 1       | 26      | FTO   | \$203.44   |
| 10 x 4            | 26-041004   | 1       | 20      | FTO   | \$287.17   |
| 10 x 6            | 26-041006   | 1       | 26      | FTO   | \$305.14   |
| 10 x 8            | 26-041008   | 1       | 34      | FTO   | \$426.17   |
| 10 x 10           | 26-041010   | 1       | 44      | FTO   | \$482.40   |
| 12 x 4            | 26-041204   | 1       | 26      | FTO   | \$363.90   |
| 12 x 6            | 26-041206   | 1       | 34      | FTO   | \$386.97   |
| 12 x 8            | 26-041208   | 1       | 41      | FTO   | \$501.60   |
| 12 x 10           | 26-041210   | 1       | 54      | FTO   | \$603.54   |
| 12 x 12           | 26-041212   | 1       | 71      | FTO   | \$653.84   |
| 15 x 4            | 26-041504   | 1       | 41      | FTO   | \$525.04   |
| 15 x 6            | 26-041506   | 1       | 48      | FTO   | \$598.56   |
| 15 x 8            | 26-041508   | 1       | 60      | FTO   | \$641.30   |
| 15 x 10           | 26-041510   | 1       | 78      | FTO   | \$746.66   |
| 15 x 12           | 26-041512   | 1       | 95      | FTO   | \$935.42   |
| 15 x 15           | 26-041515   | 1       | 12      | FTO   | \$1,038.15 |
| 18 x 4            | 26-041804   | 1       | 69      | FTO   | \$1,093.76 |
| 18 x 6            | 26-041806   | 1       | 81      | FTO   | \$1,148.12 |
| 18 x 8            | 26-041808   | 1       | 93      | FTO   | \$1,254.84 |
| 18 x 10           | 26-041810   | 1       | 101     | FTO   | \$1,410.10 |
| 18 x 12           | 26-041812   | 1       | 97      | FTO   | \$1,516.96 |
| 18 x 15           | 26-041815   | 1       | 99      | FTO   | \$1,620.68 |
| 18 x 18           | 26-041818   | 1       | 96      | FTO   | \$1,910.06 |
| 21 x 4            | 26-042104   | 1       | 118     | FTO   | \$1,522.80 |
| 21 x 6            | 26-042106   | 1       | 128     | FTO   | \$1,647.28 |
| 21 x 8            | 26-042108   | 1       | 137     | FTO   | \$1,887.17 |
| 21 x 10           | 26-042110   | 1       | 119     | FTO   | \$2,138.48 |
| 21 x 12           | 26-042112   | 1       | 120     | FTO   | \$2,313.20 |
| 21 x 15           | 26-042115   | 1       | 123     | FTO   | \$2,677.40 |
| 21 x 18           | 26-042118   | 1       | 123     | FTO   | \$3,152.35 |
| 21 x 21           | 26-042121   | 1       | 122     | FTO   | \$4,124.39 |
| 24 x 4            | 26-042404   | 1       | 174     | FTO   | \$2,334.62 |
| 24 x 6            | 26-042406   | 1       | 186     | FTO   | \$2,608.86 |
| 24 x 8            | 26-042408   | 1       | 197     | FTO   | \$2,674.62 |
| 24 x 10           | 26-042410   | 1       | 163     | FTO   | \$2,839.44 |
| 24 x 12           | 26-042412   | 1       | 163     | FTO   | \$2,898.61 |
| 24 x 15           | 26-042415   | 1       | 165     | FTO   | \$2,919.90 |



| <b>DOUBLE WYE</b> |             |         |         |       |            |
|-------------------|-------------|---------|---------|-------|------------|
| (G x G x G x G)   |             |         |         |       |            |
| SIZE              | PART NUMBER | CTN QTY | WT EACH | STYLE | LIST PRICE |
| 24 x 18           | 26-042418   | 1       | 170     | FTO   | \$4,102.99 |
| 24 x 21           | 26-042421   | 1       | 171     | FTO   | \$4,498.18 |
| 24 x 24           | 26-042424   | 1       | 162     | FTO   | \$4,945.36 |



| <b>MANHOLE ADAPTER</b>                         |             |         |         |       |            |
|--|-------------|---------|---------|-------|------------|
| (Double Bell, G x G, Sand Coating on Exterior) |             |         |         |       |            |
| SIZE   | PART NUMBER | CTN QTY | WT EACH | STYLE | LIST PRICE |
| 4  | 26-5704     | 1       | 4.4     | FTO   | \$29.40    |
| 6  | 26-5706     | 1       | 3.0     | FTO   | \$55.47    |
| 8  | 26-5708     | 1       | 5.4     | FTO   | \$61.55    |
| 10   | 26-5710     | 1       | 13      | FTO   | \$112.34   |
| 12   | 26-5712     | 1       | 16      | FTO   | \$164.63   |
| 15   | 26-5715     | 1       | 23      | FTO   | \$210.91   |
| 18   | 26-5718     | 1       | 41      | FTO   | \$456.54   |
| 21   | 26-5721     | 1       | 58      | FTO   | \$719.34   |
| 24   | 26-5724     | 1       | 74      | FTO   | \$1,197.91 |



| <b>MANHOLE ADAPTER</b>                     |             |         |         |       |            |
|--|-------------|---------|---------|-------|------------|
| (Single Bell, G, Sand Coating on Exterior) |             |         |         |       |            |
| SIZE                                       | PART NUMBER | CTN QTY | WT EACH | STYLE | LIST PRICE |
| 4  | 26-5804     | 1       | 1.2     | FTO   | \$19.11    |
| 6  | 26-5806     | 1       | 2.1     | FTO   | \$36.06    |
| 8  | 26-5808     | 1       | 3.6     | FTO   | \$40.01    |
| 10   | 26-5810     | 1       | 5.8     | FTO   | \$73.02    |
| 12   | 26-5812     | 1       | 11      | FTO   | \$107.01   |
| 15   | 26-5815     | 1       | 16      | FTO   | \$137.09   |
| 18   | 26-5818     | 1       | 23      | FTO   | \$296.75   |
| 21   | 26-5821     | 1       | 43      | FTO   | \$467.57   |
| 24   | 26-5824     | 1       | 54      | FTO   | \$778.64   |



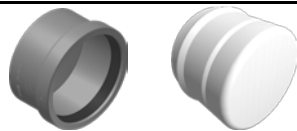
| <b>STYLE LEGEND:</b> |  |
|----------------------|--|
| FTO                  | Fabricated To Order; Non-Returnable; Non-Cancelable; Non-Stock (2-4 day lead time) |
| M                    | Molded; Gray Color (Stock)   |

NOTE: Stock items are subject to prior sale

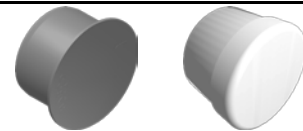
# HARCO PRICE LIST

## PVC SDR 26 Gasketed Sewer Fittings

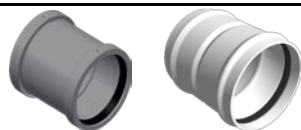
| <b>CAP</b> |             |         |         |       |            |
|------------|-------------|---------|---------|-------|------------|
| <b>(G)</b> |             |         |         |       |            |
| SIZE       | PART NUMBER | CTN QTY | WT EACH | STYLE | LIST PRICE |
| 4          | 26-4904     | 24      | 0.9     | M     | \$14.69    |
| 6          | 26-4906     | 24      | 1.9     | M     | \$34.32    |
| 8          | 26-4908     | 1       | 5.0     | FTO   | \$50.82    |
| 10         | 26-4910     | 1       | 11      | FTO   | \$98.07    |
| 12         | 26-4912     | 1       | 18      | FTO   | \$154.26   |
| 15         | 26-4915     | 1       | 27      | FTO   | \$256.64   |
| 18         | 26-4918     | 1       | 44      | FTO   | \$385.59   |
| 21         | 26-4921     | 1       | 80      | FTO   | \$901.83   |
| 24         | 26-4924     | 1       | 127     | FTO   | \$1,041.58 |



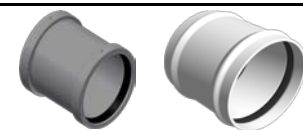
| <b>PERMANENT PLUG</b> |             |         |         |       |            |
|-----------------------|-------------|---------|---------|-------|------------|
| SIZE                  | PART NUMBER | CTN QTY | WT EACH | STYLE | LIST PRICE |
| 4                     | 26-4404     | 24      | 0.6     | M     | \$13.28    |
| 6                     | 26-4406     | 24      | 1.7     | M     | \$26.77    |
| 8                     | 26-4408     | 12      | 3.3     | M     | \$47.29    |
| 10                    | 26-4410     | 1       | 9.0     | FTO   | \$90.89    |
| 12                    | 26-4412     | 1       | 15      | FTO   | \$108.37   |
| 15                    | 26-4415     | 1       | 25      | FTO   | \$199.34   |
| 18                    | 26-4418     | 1       | 42      | FTO   | \$312.39   |
| 21                    | 26-4421     | 1       | 74      | FTO   | \$666.25   |
| 24                    | 26-4424     | 1       | 97      | FTO   | \$1,001.78 |



| <b>COUPLING</b>          |             |         |         |       |            |
|--------------------------|-------------|---------|---------|-------|------------|
| <b>With Stop (G x G)</b> |             |         |         |       |            |
| SIZE                     | PART NUMBER | CTN QTY | WT EACH | STYLE | LIST PRICE |
| 4                        | 26-0804     | 36      | 3.4     | M     | \$18.10    |
| 6                        | 26-0806     | 18      | 7.6     | M     | \$51.14    |
| 8                        | 26-0808     | 12      | 5.8     | M     | \$61.26    |
| 10                       | 26-0810     | 1       | 11      | FTO   | \$91.06    |
| 12                       | 26-0812     | 1       | 17      | FTO   | \$132.21   |
| 15                       | 26-0815     | 1       | 32      | FTO   | \$273.52   |
| 18                       | 26-0818     | 1       | 49      | FTO   | \$581.50   |
| 21                       | 26-0821     | 1       | 89      | FTO   | \$1,068.70 |
| 24                       | 26-0824     | 1       | 142     | FTO   | \$1,556.93 |



| <b>REPAIR COUPLING</b> |             |         |         |       |            |
|------------------------|-------------|---------|---------|-------|------------|
| <b>No Stop (G x G)</b> |             |         |         |       |            |
| SIZE                   | PART NUMBER | CTN QTY | WT EACH | STYLE | LIST PRICE |
| 4                      | 26-0904     | 36      | 3.4     | M     | \$15.75    |
| 6                      | 26-0906     | 18      | 2.0     | M     | \$36.23    |
| 8                      | 26-0908     | 12      | 4.4     | M     | \$59.51    |
| 10                     | 26-0910     | 1       | 12      | F     | \$91.06    |
| 12                     | 26-0912     | 1       | 15      | F     | \$132.21   |
| 15                     | 26-0915     | 1       | 21      | FTO   | \$273.52   |
| 18                     | 26-0918     | 1       | 39      | FTO   | \$581.50   |
| 21                     | 26-0921     | 1       | 56      | FTO   | \$1,068.72 |
| 24                     | 26-0924     | 1       | 72      | FTO   | \$1,556.93 |



| <b>STYLE LEGEND:</b> |  |
|----------------------|--|
| F                    | Fabricated (Stock)   |
| FTO                  | Fabricated To Order; Non-Returnable; Non-Cancelable; Non-Stock (2-4 day lead time) |
| M                    | Molded; Gray Color (Stock)   |

NOTE: Stock items are subject to prior sale

# HARCO PRICE LIST

## PVC SDR 26 Gasketed Sewer Fittings

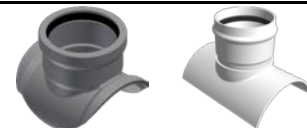
### SADDLE WYE



Includes 2 S.S. Straps

| SIZE    | PART NUMBER | CTN QTY | WT EACH | STYLE | LIST PRICE |
|---------|-------------|---------|---------|-------|------------|
| 8 x 4   | 26-550804   | 1       | 1.4     | FBNS  | \$120.72   |
| 8 x 6   | 26-550806   | 1       | 4.1     | FBNS  | \$138.04   |
| 10 x 4  | 26-551004   | 1       | 2.7     | FBNS  | \$123.03   |
| 10 x 6  | 26-551006   | 1       | 5.4     | FBNS  | \$141.49   |
| 10 x 8  | 26-551008   | 1       | 13      | FBNS  | \$171.40   |
| 12 x 4  | 26-551204   | 1       | 2.7     | FBNS  | \$125.38   |
| 12 x 6  | 26-551206   | 1       | 6.8     | FBNS  | \$145.14   |
| 12 x 8  | 26-551208   | 1       | 13      | FBNS  | \$239.54   |
| 12 x 10 | 26-551210   | 1       | 26      | FBNS  | \$289.11   |
| 15 x 4  | 26-551504   | 1       | 2.7     | FBNS  | \$128.14   |
| 15 x 6  | 26-551506   | 1       | 4.5     | FBNS  | \$146.18   |
| 15 x 8  | 26-551508   | 1       | 14      | FBNS  | \$295.31   |
| 15 x 10 | 26-551510   | 1       | 26      | FBNS  | \$330.40   |
| 15 x 12 | 26-551512   | 1       | 43      | FBNS  | \$404.75   |
| 18 x 4  | 26-551804   | 1       | 2.6     | FBNS  | \$150.75   |
| 18 x 6  | 26-551806   | 1       | 4.5     | FBNS  | \$165.21   |
| 18 x 8  | 26-551808   | 1       | 13      | FBNS  | \$328.35   |
| 18 x 10 | 26-551810   | 1       | 26      | FBNS  | \$371.70   |
| 18 x 12 | 26-551812   | 1       | 42      | FBNS  | \$464.64   |
| 18 x 15 | 26-551815   | 1       | 57      | FBNS  | \$580.28   |
| 21 x 4  | 26-552104   | 1       | 3.1     | FBNS  | \$156.94   |
| 21 x 6  | 26-552106   | 1       | 4.7     | FBNS  | \$165.21   |
| 21 x 8  | 26-552108   | 1       | 14      | FBNS  | \$361.38   |
| 21 x 10 | 26-552110   | 1       | 26      | FBNS  | \$446.05   |
| 21 x 12 | 26-552112   | 1       | 42      | FBNS  | \$557.57   |
| 21 x 15 | 26-552115   | 1       | 54      | FBNS  | \$834.29   |
| 21 x 18 | 26-552118   | 1       | 123     | FBNS  | \$1,251.43 |
| 24 x 4  | 26-552404   | 1       | 3       | FBNS  | \$161.06   |
| 24 x 6  | 26-552406   | 1       | 4.9     | FBNS  | \$167.27   |
| 24 x 8  | 26-552408   | 1       | 13      | FBNS  | \$301.49   |
| 24 x 10 | 26-552410   | 1       | 24      | FBNS  | \$454.66   |
| 24 x 12 | 26-552412   | 1       | 41      | FBNS  | \$679.40   |
| 24 x 15 | 26-552415   | 1       | 51      | FBNS  | \$1,020.13 |
| 24 x 18 | 26-552418   | 1       | 131     | FBNS  | \$1,379.45 |
| 24 x 21 | 26-552421   | 1       | 204     | FBNS  | \$2,067.11 |

### SADDLE TEE



Includes 2 S.S. Straps

| SIZE    | PART NUMBER | CTN QTY | WT EACH | STYLE | LIST PRICE |
|---------|-------------|---------|---------|-------|------------|
| 8 x 4   | 26-560804   | 1       | 2.7     | FBNS  | \$103.97   |
| 8 x 6   | 26-560806   | 1       | 4.1     | FBNS  | \$120.93   |
| 10 x 4  | 26-561004   | 1       | 2.7     | FBNS  | \$108.28   |
| 10 x 6  | 26-561006   | 1       | 4.1     | FBNS  | \$126.18   |
| 10 x 8  | 26-561008   | 1       | 12      | FBNS  | \$140.43   |
| 12 x 4  | 26-561204   | 1       | 2.7     | FBNS  | \$112.77   |
| 12 x 6  | 26-561206   | 1       | 4.1     | FBNS  | \$131.28   |
| 12 x 8  | 26-561208   | 1       | 11      | FBNS  | \$163.15   |
| 12 x 10 | 26-561210   | 1       | 19      | FBNS  | \$204.45   |
| 15 x 4  | 26-561504   | 1       | 2.0     | FBNS  | \$114.25   |
| 15 x 6  | 26-561506   | 1       | 3.5     | FBNS  | \$134.89   |
| 15 x 8  | 26-561508   | 1       | 12      | FBNS  | \$167.27   |
| 15 x 10 | 26-561510   | 1       | 19      | FBNS  | \$208.57   |
| 15 x 12 | 26-561512   | 1       | 31      | FBNS  | \$260.20   |
| 18 x 4  | 26-561804   | 1       | 2.0     | FBNS  | \$150.75   |
| 18 x 6  | 26-561806   | 1       | 3.4     | FBNS  | \$165.21   |
| 18 x 8  | 26-561808   | 1       | 12      | FBNS  | \$297.36   |
| 18 x 10 | 26-561810   | 1       | 18      | FBNS  | \$371.70   |
| 18 x 12 | 26-561812   | 1       | 30      | FBNS  | \$464.64   |
| 18 x 15 | 26-561815   | 1       | 41      | FBNS  | \$580.28   |
| 21 x 4  | 26-562104   | 1       | 2.3     | FBNS  | \$156.94   |
| 21 x 6  | 26-562106   | 1       | 3.8     | FBNS  | \$165.21   |
| 21 x 8  | 26-562108   | 1       | 12      | FBNS  | \$297.36   |
| 21 x 10 | 26-562110   | 1       | 18      | FBNS  | \$446.05   |
| 21 x 12 | 26-562112   | 1       | 31      | FBNS  | \$557.57   |
| 21 x 15 | 26-562115   | 1       | 42      | FBNS  | \$834.29   |
| 21 x 18 | 26-562118   | 1       | 85      | FBNS  | \$1,251.43 |
| 24 x 4  | 26-562404   | 1       | 2.4     | FBNS  | \$161.06   |
| 24 x 6  | 26-562406   | 1       | 3.8     | FBNS  | \$167.27   |
| 24 x 8  | 26-562408   | 1       | 12      | FBNS  | \$301.49   |
| 24 x 10 | 26-562410   | 1       | 19      | FBNS  | \$454.66   |
| 24 x 12 | 26-562412   | 1       | 28      | FBNS  | \$679.40   |
| 24 x 15 | 26-562415   | 1       | 41      | FBNS  | \$1,020.13 |
| 24 x 18 | 26-562418   | 1       | 77      | FBNS  | \$1,379.45 |
| 24 x 21 | 26-562421   | 1       | 123     | FBNS  | \$2,067.11 |

#### STYLE LEGEND:

|      |  |
|------|--|
| FBNS | Fabricated To Order; Gasket Branch and Solvent Weld Skirt; Non-Returnable; Non-Cancelable; Non-Stock (2-4 day lead time) |
|------|--|

## HARCO PRICE LIST

### PVC SDR 26 Gasketed Sewer Fittings

#### DEEP SOCKET COUPLING



(Deep Socket G x G)

| SIZE | PART NUMBER | CTN QTY | WT EACH | STYLE | LIST PRICE |
|------|-------------|---------|---------|-------|------------|
| 4    | 26-9004     | 1       | 2.8     | FTO   | \$61.19    |
| 6    | 26-9006     | 1       | 6.3     | FTO   | \$83.11    |

#### DEEP SOCKET COUPLING



(Deep Socket G x S)

| SIZE | PART NUMBER | CTN QTY | WT EACH | STYLE | LIST PRICE |
|------|-------------|---------|---------|-------|------------|
| 4    | 26-9104     | 1       | 2.8     | FTO   | \$59.36    |
| 6    | 26-9106     | 1       | 6.3     | FTO   | \$80.63    |

#### 90° DEEP SOCKET BEND



(Deep Socket G x G)

| SIZE | PART NUMBER | CTN QTY | WT EACH | STYLE | LIST PRICE |
|------|-------------|---------|---------|-------|------------|
| 4    | 26-9804     | 1       | 4.2     | FTO   | \$108.97   |
| 6    | 26-9806     | 1       | 9.6     | FTO   | \$121.34   |

#### 90° DEEP SOCKET BEND



(Deep Socket G x S)

| SIZE | PART NUMBER | CTN QTY | WT EACH | STYLE | LIST PRICE |
|------|-------------|---------|---------|-------|------------|
| 4    | 26-9904     | 1       | 4.2     | FTO   | \$108.97   |
| 6    | 26-9906     | 1       | 9.6     | FTO   | \$121.34   |

#### 45° DEEP SOCKET BEND



(Deep Socket G x G)

| SIZE | PART NUMBER | CTN QTY | WT EACH | STYLE | LIST PRICE |
|------|-------------|---------|---------|-------|------------|
| 4    | 26-9204     | 1       | 3.0     | FTO   | \$54.23    |
| 6    | 26-9206     | 1       | 6.6     | FTO   | \$61.51    |

#### 45° DEEP SOCKET BEND



(Deep Socket G x S)

| SIZE | PART NUMBER | CTN QTY | WT EACH | STYLE | LIST PRICE |
|------|-------------|---------|---------|-------|------------|
| 4    | 26-9304     | 1       | 3.0     | FTO   | \$54.23    |
| 6    | 26-9306     | 1       | 6.6     | FTO   | \$61.51    |

#### 22½° DEEP SOCKET BEND



(Deep Socket G x G)

| SIZE | PART NUMBER | CTN QTY | WT EACH | STYLE | LIST PRICE |
|------|-------------|---------|---------|-------|------------|
| 4    | 26-9604     | 1       | 3.0     | FTO   | \$54.23    |
| 6    | 26-9606     | 1       | 6.6     | FTO   | \$61.51    |

#### 22½° DEEP SOCKET BEND



(Deep Socket G x S)

| SIZE | PART NUMBER | CTN QTY | WT EACH | STYLE | LIST PRICE |
|------|-------------|---------|---------|-------|------------|
| 4    | 26-9704     | 1       | 3.0     | FTO   | \$54.23    |
| 6    | 26-9706     | 1       | 6.6     | FTO   | \$61.51    |

#### STYLE LEGEND:

|     |  |
|-----|--|
| FTO | Fabricated To Order; Non-Returnable; Non-Cancelable; Non-Stock (2-4 day lead time) |
|-----|--|