

Effective Date: 03.03.08

Updated: 05.12.08

Supersedes: 04.02.07



CIOD Drain & Pressure Fittings Price Catalog

Pure-Blue® C900/C905 Drainage Gasket Fittings

Pure-Blue® C900/C905 Pressure Gasket Fittings

Conditions of Sale

MINIMUM ORDER:

Minimum fitting order is \$US 100.00.

MINIMUM QUANTITY:

Minimum Molded fitting order is One Case (molded fittings cannot be ordered by individual quantity).

PRICING:

Prices are subject to change at any time without notice. All orders are subject to credit approval prior to shipment.

FREIGHT: Within the Continental US:

Fitting orders shipped within the continental US are FOB plant, freight prepaid and charged back.

Outside Continental US:

Fitting orders shipped outside the continental US are FOB plant, freight prepaid to US port and charged back.

The INCOTERM is Ex Works.

FULL FREIGHT ALLOWED ORDERS:

Within the Continental US:

Minimum \$1500.00 net order shipped from one location and delivered to one location.

Fittings ride for FREE, if loaded on a Full Freight Allowed pipe shipment.

Outside Continental US:

Minimum \$1500.00 net order shipped orders shipped to the port prepaid.

The INCOTERM is FAS.

RETURNS AND RESTOCKING:

A Return of Materials Authorization (RMA) is required for all returns.

Prior to returning any items, contact Customer Service for details at 800-356-9432.

Returned items may be assessed a 25% restocking fee upon return and inspection of product.

Items must be in "saleable condition" to qualify for credit authorization.

Items marked NR in this catalog are a non-standard item and are non-returnable.

ORDER CANCELLATION:

Non-standard and custom products are non-cancelable once production has begun.

Large quantities of a single product may require a non-cancelable agreement.

Direct all orders to Freedom Plastics Customer Service Ph: 800-356-9432 Fax: 608-754-6134 customerservice@freedomplastics.com

PRODUCT WARRANTY

LIMITED WARRANTY: Seller warrants only that the goods covered hereby shall be manufactured in accordance with any agreed upon specifications, and free from defects in material and workmanship under proper and normal use and service for a period of one year from the date of shipment. Samples of goods provided or displayed by Seller are not meant to be representative of goods sold, and goods sold may differ materially from such samples. Buyer shall notify Seller of any alleged defects within 48 hours of discovery of any alleged defect and within one such year period. Seller is not liable for any warranty claim if such notice is not provided. Seller may, at its option, and subject to its right to inspect alleged defective goods and its acceptance of any warranty claim, agree to permit Buyer to perform repair work on site or elsewhere provided Seller agrees in advance in writing to the cost of repair. Repairs, replacements or other remedies without prior inspection by Seller or not authorized in writing by Seller void this warranty. This limited warranty is void if the goods sold are not installed in accordance with recommended practices or are not installed by a licensed contractor qualified to install the goods or the goods are not used in accordance with instructions contained in any operation manual or specifications or if the goods are used in conditions other than those for which the goods were designed. Goods may not be returned without Seller's prior written authorization. **THIS WARRANTY IS IN LIEU OF ALL OTHER STATUTORY, EXPRESS OR IMPLIED WARRANTIES INCLUDING WARRANTIES OF MERCHANTABILITY AND FITNESS FOR A PARTICULAR PURPOSE, WHICH ARE HEREBY DISCLAIMED.**

LIMITATION OF LIABILITY: SELLER SHALL NOT BE LIABLE UNDER ANY CIRCUMSTANCES FOR ANY INCIDENTAL, CONSEQUENTIAL OR SPECIAL DAMAGES INCLUDING: (1) DAMAGES ARISING FROM THE DESIGN, MANUFACTURE, FABRICATION, SALE, USE, INSTALLATION OR PROVISION OF THE GOODS; (2) DAMAGES ARISING FROM GOODS THAT HAVE BEEN INCORPORATED INTO ANOTHER PRODUCT; (3) DAMAGES ARISING FROM ANY BREACH OF THE AGREEMENT; OR (4) DAMAGES ARISING FROM ANY OTHER CAUSE WHATSOEVER, WHETHER BASED ON CONTRACT, TORT OR ANY OTHER THEORY OF LIABILITY, AND REGARDLESS OF ANY ADVICE OR REPRESENTATIONS THAT MAY HAVE BEEN RENDERED BY SELLER CONCERNING THE DESIGN, MANUFACTURE, FABRICATION, SALE, USE, INSTALLATION OR PROVISION OF THE GOODS. SELLER'S OBLIGATION UNDER THE ABOVE LIMITED WARRANTY IS STRICTLY AND EXCLUSIVELY LIMITED TO THE REPAIR OR REPLACEMENT FREE OF CHARGE OF SUCH GOODS AS ARE FOUND TO BE DEFECTIVE IN MATERIAL OR WORKMANSHIP AS PROVIDED AND LIMITED ABOVE. SELLER RESERVES THE RIGHT TO SATISFY ITS WARRANTY OBLIGATION IN FULL, WITH RESPECT TO DEFECTIVE GOODS, BY THE PAYMENT TO THE BUYER OF ALL SUMS PAID BY THE BUYER TO SELLER FOR SUCH GOODS.

WARNING: Air pressure testing of installed PVC pressure piping is expressly prohibited for reasons of safety, should failure occur. PVC piping and fittings produced by Freedom Plastics Inc. are not intended for transporting or storing of compressed air or gasses. If these products are found to be used in these types of applications, the warranty will be automatically voided.

Special Note: Applications with temperatures in excess of 73° F will result in a de-rating of the piping systems maximum internal pressure capabilities. Temperatures falling below 73° F will increase the tensile strength of the piping system, while decreasing the impact strength.

Pure-Blue® CIOD Drainage Fittings

Short Form Specifications - Cast Iron O.D. Fittings DR14, DR18, DR25 & DR41

Freedom Plastics Inc. certifies that all DR14, DR18, DR25 and DR41 Cast Iron OD gasket drainage fittings fabricated by Freedom Plastics are inspected in accordance with ASTM D-2122. The fittings are made from DR14, DR18, DR25 or DR41 C900 or C905 pipe stock, which meets or exceeds all specifications of AWWA C900-97 or C905-97. The basic material used in the manufacture of this pipe conforms to ASTM D-1784, with a cell classification of 12454 Type 1, Grade 1. The gasket joints conform to AWWA C900-97 and C905-97 gasket pipe joint requirements.

Contact Customer Service for price and availability on items not listed.



ADAPTER IPS - CIOD

*IPS Gasket x
C900/C905 Gasket*

SIZE	DR14		DR18		DR25		DR41	
	PART #	LIST PRICE	PART #	LIST PRICE	PART #	LIST PRICE	PART #	LIST PRICE
4 x 4			48-11	NR	\$71.25			
6 x 6			48-12	NR	\$128.93			
8 x 8			48-13	NR	\$283.63			
10 x 10			48-14	NR	\$440.63			
12 x 12			48-15	NR	\$561.33			
14 x 14			48-16	NR	\$861.75			
16 x 16			48-17	NR	\$1,048.96			
18 x 18			48-18	NR	\$2,505.57			
20 x 20			48-19	NR	\$2,789.52			
24 x 24			48-20	NR	\$3,544.86			



ADAPTER SEWER - CIOD

*Sewer Gasket x
C900/C905 Gasket*

SIZE	DR14		DR18		DR25		DR41	
	PART #	LIST PRICE	PART #	LIST PRICE	PART #	LIST PRICE	PART #	LIST PRICE
4 x 4			35-664	NR	\$139.87			
6 x 6			35-665	NR	\$147.62			
8 x 8			35-666	NR	\$336.93			
10 x 10			35-667	NR	\$526.19			
12 x 12			35-668	NR	\$670.32			
15 x 14			35-669	NR	\$1,002.14			
18 x 18			35-671	NR	\$2,000.94			
21 x 20			35-672	NR	\$2,505.20			
24 x 24			35-673	NR	\$3,227.15			
27 x 24			35-674	NR	\$3,992.84			
27 x 30			35-675	NR	CALL			
30 x 30			35-676	NR	CALL			
36 x 36			35-677	NR	CALL			



ADAPTER - MANHOLE

*CIOD Gasket x Spigot
with Sand Coating*

SIZE	DR14		DR18		DR25		DR41	
	PART #	LIST PRICE	PART #	LIST PRICE	PART #	LIST PRICE	PART #	LIST PRICE
8			52-500	NR	\$169.28	53-500	NR	\$160.77
10			52-501	NR	\$258.34	53-501	NR	\$245.33
12			52-502	NR	\$377.34	53-502	NR	\$358.36
14			52-503	NR	\$518.70	53-503	NR	\$492.60
16						53-504	NR	\$713.31

Pure-Blue® CIOD Drainage Fittings



CAP
Gasket x Cap

SIZE	DR14			DR18			DR25			DR41		
	PART #	NR	LIST PRICE	PART #	NR	LIST PRICE	PART #	NR	LIST PRICE	PART #	NR	LIST PRICE
8	51-46	NR	\$348.64	52-53	NR	\$293.72	53-97	NR	\$293.72			
10	51-48	NR	\$500.05	52-54	NR	\$421.27	53-98	NR	\$421.27			
12	51-49	NR	\$612.77	52-55	NR	\$516.23	53-99	NR	\$490.26			
14	51-50	NR	\$636.59	52-56	NR	\$536.30	53-108	NR	\$509.30	54-1	NR	\$495.66
16	51-51	NR	\$718.27	52-57	NR	\$605.12	53-109	NR	\$574.65	54-2	NR	\$559.26
18				52-58	NR	\$1,007.83	53-110	NR	\$957.12	54-3	NR	\$931.50
20				52-59	NR	\$1,159.63	53-111	NR	\$1,101.28	54-4	NR	\$1,071.82
24				52-60	NR	\$1,671.64	53-112	NR	\$1,587.53	54-5	NR	\$1,545.03
30							53-113	NR	CALL	54-6	NR	CALL
36							53-114	NR	CALL	54-7	NR	CALL



COUPLING - REPAIR
Gasket x Gasket

SIZE	DR14			DR18			DR25			DR41		
	PART #	NR	LIST PRICE	PART #	NR	LIST PRICE	PART #	NR	LIST PRICE	PART #	NR	LIST PRICE
8	51-57	NR	\$182.68	52-113	NR	\$153.90	53-124	NR	\$153.90			
10	51-58	NR	\$278.78	52-114	NR	\$234.85	53-125	NR	\$234.85			
12	51-59	NR	\$407.20	52-115	NR	\$343.05	53-126	NR	\$343.05			
14	51-60	NR	\$1,006.53	52-116	NR	\$847.96	53-127	NR	\$847.96	54-15	NR	\$825.28
16	51-61	NR	\$1,201.12	52-117	NR	\$1,011.89	53-128	NR	\$1,011.89	54-16	NR	\$984.80
18				52-118	NR	\$2,697.69	53-129	NR	\$2,697.69	54-17	NR	\$2,625.49
20				52-119	NR	\$3,027.56	53-130	NR	\$3,027.56	54-18	NR	\$2,946.54
24				52-120	NR	\$3,820.86	53-131	NR	\$3,820.86	54-19	NR	\$3,718.60
30							53-132	NR	CALL	54-20	NR	CALL
36							53-133	NR	CALL	54-21	NR	CALL



COUPLING - STOP
Gasket x Gasket

SIZE	DR14			DR18			DR25			DR41		
	PART #	NR	LIST PRICE	PART #	NR	LIST PRICE	PART #	NR	LIST PRICE	PART #	NR	LIST PRICE
8	51-62	NR	\$182.68	52-121	NR	\$153.90	53-134	NR	\$153.90			
10	51-63	NR	\$278.78	52-122	NR	\$234.85	53-135	NR	\$234.85			
12	51-64	NR	\$407.20	52-123	NR	\$343.05	53-136	NR	\$343.05			
14	51-65	NR	\$1,006.53	52-124	NR	\$847.96	53-137	NR	\$847.96	54-22	NR	\$825.28
16	51-66	NR	\$1,201.12	52-125	NR	\$1,011.89	53-138	NR	\$1,011.89	54-23	NR	\$984.80
18				52-126	NR	\$2,697.69	53-139	NR	\$2,697.69	54-24	NR	\$2,625.49
20				52-127	NR	\$3,027.56	53-140	NR	\$3,027.56	54-25	NR	\$2,946.54
24				52-128	NR	\$3,820.86	53-141	NR	\$3,820.86	54-26	NR	\$3,718.60
30							53-142	NR	CALL	54-27	NR	CALL
36							53-143	NR	CALL	54-28	NR	CALL

Pure-Blue® CIOD Drainage Fittings

Elbows can be special ordered in various degree angles. Contact factory for details.



ELBOW - 11 1/4
Gasket x Gasket

SIZE	DR14			DR18			DR25			DR41		
	PART #	NR	LIST PRICE	PART #	NR	LIST PRICE	PART #	NR	LIST PRICE	PART #	NR	LIST PRICE
8	51-67	NR	\$295.94	52-129	NR	\$244.87	53-144	NR	\$236.77			
10	51-68	NR	\$451.61	52-130	NR	\$373.66	53-145	NR	\$361.33			
12	51-69	NR	\$686.80	52-131	NR	\$568.28	53-146	NR	\$549.43			
14	51-70	NR	\$1,239.54	52-132	NR	\$1,044.26	53-147	NR	\$991.70	54-29	NR	\$965.15
16	51-71	NR	\$1,506.18	52-133	NR	\$1,268.90	53-148	NR	\$1,205.07	54-30	NR	\$1,172.82
18				52-134	NR	\$2,228.17	53-149	NR	\$2,116.04	54-31	NR	\$2,059.41
20				52-135	NR	\$2,766.48	53-150	NR	\$2,627.29	54-32	NR	\$2,556.97
24				52-136	NR	\$3,913.95	53-151	NR	\$3,717.02	54-33	NR	\$3,617.54
30							53-152	NR	CALL	54-34	NR	CALL
36							53-153	NR	CALL	54-35	NR	CALL



ELBOW - 11 1/4
Gasket x Spigot

SIZE	DR14			DR18			DR25			DR41		
	PART #	NR	LIST PRICE	PART #	NR	LIST PRICE	PART #	NR	LIST PRICE	PART #	NR	LIST PRICE
8	51-72	NR	\$289.65	52-137	NR	\$239.66	53-154	NR	\$231.73			
10	51-73	NR	\$442.02	52-138	NR	\$365.75	53-155	NR	\$353.64			
12	51-74	NR	\$674.13	52-139	NR	\$557.78	53-156	NR	\$539.36			
14	51-75	NR	\$1,313.28	52-140	NR	\$1,106.39	53-157	NR	\$955.17	54-36	NR	\$929.60
16	51-76	NR	\$1,646.22	52-141	NR	\$1,386.88	53-158	NR	\$1,197.36	54-37	NR	\$1,165.31
18				52-142	NR	\$2,377.46	53-159	NR	\$2,052.57	54-38	NR	\$1,997.63
20				52-143	NR	\$2,951.85	53-160	NR	\$2,548.44	54-39	NR	\$2,480.23
24				52-144	NR	\$4,176.23	53-161	NR	\$3,605.50	54-40	NR	\$3,509.00
30							53-162	NR	CALL	54-41	NR	CALL
36							53-163	NR	CALL	54-42	NR	CALL



ELBOW - 22 1/2
Gasket x Gasket

SIZE	DR14			DR18			DR25			DR41		
	PART #	NR	LIST PRICE	PART #	NR	LIST PRICE	PART #	NR	LIST PRICE	PART #	NR	LIST PRICE
8	51-77	NR	\$295.94	52-145	NR	\$239.66	53-164	NR	\$236.77			
10	51-78	NR	\$451.61	52-146	NR	\$365.75	53-165	NR	\$361.33			
12	51-79	NR	\$686.80	52-147	NR	\$557.78	53-166	NR	\$549.43			
14	51-80	NR	\$1,239.54	52-148	NR	\$1,106.39	53-167	NR	\$991.70	54-43	NR	\$965.15
16	51-81	NR	\$1,506.18	52-149	NR	\$1,386.88	53-168	NR	\$1,205.07	54-44	NR	\$1,172.82
18				52-150	NR	\$2,377.46	53-169	NR	\$2,116.04	54-45	NR	\$2,059.41
20				52-151	NR	\$2,951.85	53-170	NR	\$2,627.29	54-46	NR	\$2,556.97
24				52-152	NR	\$4,176.23	53-171	NR	\$3,717.02	54-47	NR	\$3,617.54
30							53-172	NR	CALL	54-48	NR	CALL
36							53-173	NR	CALL	54-49	NR	CALL

Pure-Blue® CIOD Drainage Fittings

Elbows can be special ordered in various degree angles. Contact factory for details.



ELBOW - 22 1/2
Gasket x Spigot

SIZE	DR14			DR18			DR25			DR41		
	PART #		LIST PRICE	PART #		LIST PRICE	PART #		LIST PRICE	PART #		LIST PRICE
8	51-82	NR	\$289.65	52-153	NR	\$239.66	53-174	NR	\$231.73			
10	51-83	NR	\$442.02	52-154	NR	\$365.75	53-175	NR	\$353.64			
12	51-84	NR	\$674.13	52-155	NR	\$557.78	53-176	NR	\$539.33			
14	51-85	NR	\$1,239.54	52-156	NR	\$1,044.26	53-177	NR	\$955.17	54-50	NR	\$929.60
16	51-86	NR	\$1,506.18	52-157	NR	\$1,268.90	53-178	NR	\$1,197.36	54-51	NR	\$1,165.31
18				52-158	NR	\$2,228.17	53-179	NR	\$2,116.04	54-52	NR	\$1,997.63
20				52-159	NR	\$2,766.48	53-180	NR	\$2,548.44	54-53	NR	\$2,480.23
24				52-160	NR	\$3,913.95	53-181	NR	\$3,605.50	54-54	NR	\$3,509.00
30							53-182	NR	CALL	54-55	NR	CALL
36							53-183	NR	CALL	54-56	NR	CALL



ELBOW - 45
Gasket x Gasket

SIZE	DR14			DR18			DR25			DR41		
	PART #		LIST PRICE	PART #		LIST PRICE	PART #		LIST PRICE	PART #		LIST PRICE
8	51-87	NR	\$289.65	52-161	NR	\$239.66	53-101	NR	\$231.73			
10	51-88	NR	\$442.02	52-162	NR	\$365.75	53-184	NR	\$353.64			
12	51-89	NR	\$674.13	52-163	NR	\$557.78	53-100	NR	\$539.36			
14	51-90	NR	\$1,239.54	52-164	NR	\$1,044.26	53-185	NR	\$955.17	54-57	NR	\$929.60
16	51-91	NR	\$1,506.18	52-165	NR	\$1,268.90	53-186	NR	\$1,197.36	54-58	NR	\$1,165.31
18				52-166	NR	\$2,228.17	53-187	NR	\$2,052.57	54-59	NR	\$1,997.63
20				52-167	NR	\$2,766.49	53-188	NR	\$2,548.44	54-60	NR	\$2,480.23
24				52-168	NR	\$3,913.94	53-189	NR	\$3,605.50	54-61	NR	\$3,509.00
30							53-190	NR	CALL	54-62	NR	CALL
36							53-191	NR	CALL	54-63	NR	CALL



ELBOW - 45
Gasket x Spigot

SIZE	DR14			DR18			DR25			DR41		
	PART #		LIST PRICE	PART #		LIST PRICE	PART #		LIST PRICE	PART #		LIST PRICE
8	51-92	NR	\$295.94	52-169	NR	\$244.87	53-192	NR	\$236.77			
10	51-93	NR	\$451.61	52-170	NR	\$373.66	53-193	NR	\$361.29			
12	51-94	NR	\$686.80	52-171	NR	\$568.28	53-194	NR	\$549.49			
14	51-95	NR	\$1,193.91	52-172	NR	\$1,044.26	53-195	NR	\$955.17	54-64	NR	\$929.60
16	51-96	NR	\$1,496.58	52-173	NR	\$1,268.90	53-196	NR	\$1,197.36	54-65	NR	\$1,165.31
18				52-174	NR	\$2,228.17	53-197	NR	\$2,052.57	54-66	NR	\$1,997.63
20				52-175	NR	\$2,766.49	53-198	NR	\$2,548.44	54-67	NR	\$2,480.23
24				52-176	NR	\$3,913.94	53-199	NR	\$3,605.50	54-68	NR	\$3,509.00
30							53-200	NR	CALL	54-69	NR	CALL
36							53-107	NR	CALL	54-70	NR	CALL

Pure-Blue® CIOD Drainage Fittings

Elbows can be special ordered in various degree angles. Contact factory for details.



ELBOW - 90
Gasket x Gasket

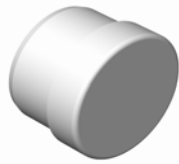
SIZE	DR14			DR18			DR25			DR41		
	PART #		LIST PRICE	PART #		LIST PRICE	PART #		LIST PRICE	PART #		LIST PRICE
8	51-97	NR	\$527.94	52-177	NR	\$436.84	53-103	NR	\$422.53			
10	51-98	NR	\$805.67	52-178	NR	\$666.64	53-201	NR	\$644.81			
12	51-99	NR	\$1,062.60	52-179	NR	\$879.21	53-202	NR	\$850.43			
14	51-100	NR	\$1,568.63	52-180	NR	\$1,321.51	53-203	NR	\$1,255.44	54-71	NR	\$1,221.85
16	51-101	NR	\$1,871.32	52-181	NR	\$1,576.51	53-204	NR	\$1,497.69	54-72	NR	\$1,457.61
18				52-182	NR	\$2,804.96	53-205	NR	\$2,664.71	54-73	NR	\$2,593.40
20				52-183	NR	\$3,373.60	53-206	NR	\$3,204.93	54-74	NR	\$3,119.15
24				52-184	NR	\$5,650.36	53-207	NR	\$5,367.83	54-75	NR	\$5,224.17
30							53-208	NR	CALL	54-76	NR	CALL
36							53-209	NR	CALL	54-77	NR	CALL



ELBOW - 90
Gasket x Spigot

SIZE	DR14			DR18			DR25			DR41		
	PART #		LIST PRICE	PART #		LIST PRICE	PART #		LIST PRICE	PART #		LIST PRICE
8	51-102	NR	\$362.07	52-185	NR	\$299.59	53-210	NR	\$289.78			
10	51-103	NR	\$552.52	52-186	NR	\$457.16	53-211	NR	\$442.19			
12	51-104	NR	\$677.41	52-187	NR	\$560.50	53-212	NR	\$542.15			
14	51-105	NR	\$1,559.03	52-188	NR	\$1,313.41	53-213	NR	\$1,247.73	54-78	NR	\$1,214.34
16	51-106	NR	\$1,801.66	52-189	NR	\$1,517.83	53-214	NR	\$1,441.91	54-79	NR	\$1,403.32
18				52-190	NR	\$2,968.87	53-215	NR	\$2,820.41	54-80	NR	\$2,744.92
20				52-191	NR	\$3,151.03	53-216	NR	\$2,989.27	54-81	NR	\$2,909.26
24				52-192	NR	\$5,452.02	53-217	NR	\$5,179.45	54-82	NR	\$5,040.82
30							53-218	NR	CALL	54-83	NR	CALL
36							53-219	NR	CALL	54-84	NR	CALL

Pure-Blue® CIOD Drainage Fittings



PLUG
Cap x Spigot

SIZE	DR14			DR18			DR25			DR41		
	PART #		LIST PRICE	PART #		LIST PRICE	PART #		LIST PRICE	PART #		LIST PRICE
8	51-52	NR	\$382.23	52-105	NR	\$322.01	53-104	NR	\$322.01			
10	51-53	NR	\$402.93	52-106	NR	\$339.46	53-115	NR	\$339.46			
12	51-54	NR	\$508.78	52-107	NR	\$428.63	53-116	NR	\$428.63			
14	51-55	NR	\$566.58	52-108	NR	\$477.32	53-117	NR	\$457.26	54-8	NR	\$445.01
16				52-109	NR	\$532.27	53-118	NR	\$505.46	54-9	NR	\$491.93
18				52-110	NR	\$872.25	53-119	NR	\$828.36	54-10	NR	\$806.19
20				52-111	NR	\$1,024.05	53-120	NR	\$972.49	54-11	NR	\$946.46
24				52-112	NR	\$1,610.92	53-121	NR	\$1,529.84	54-12	NR	\$1,488.88
30							53-122	NR	CALL	54-13	NR	CALL
36							53-123	NR	CALL	54-14	NR	CALL



**FLANGE - VAN STONE
STYLE**

Flange x Spigot
4" - 12" w/plastic flange
14" - 24" w/metal flange

SIZE	DR14			DR18			DR25			DR41		
	PART #		LIST PRICE	PART #		LIST PRICE	PART #		LIST PRICE	PART #		LIST PRICE
8				52-193	NR	\$233.37						
10				52-194	NR	\$466.77						
12				52-195	NR	\$540.27						
14				52-196	NR	\$968.79						
16				52-197	NR	\$1,315.48						
18				52-198	NR	\$1,373.87						
20				52-199	NR	\$1,724.31						
24				52-200	NR	\$2,453.98						
30												
36												



**FLANGE - VAN STONE
STYLE**

Flange x Gasket
4" - 12" w/plastic flange
14" - 24" w/metal flange

SIZE	DR14			DR18			DR25			DR41		
	PART #		LIST PRICE	PART #		LIST PRICE	PART #		LIST PRICE	PART #		LIST PRICE
8				52-201	NR	\$244.91						
10				52-202	NR	\$489.33						
12				52-203	NR	\$558.00						
14				52-204	NR	\$968.79						
16				52-205	NR	\$1,315.48						
18				52-206	NR	\$1,373.35						
20				52-207	NR	\$1,724.31						
24				52-208	NR	\$2,453.98						
30												
36												

Pure-Blue® CIOD Drainage Fittings



INCREASER COUPLING
Gasket x Gasket

SIZE	DR14			DR18			DR25			DR41		
	PART #		LIST PRICE	PART #		LIST PRICE	PART #		LIST PRICE	PART #		LIST PRICE
4 x 8	51-107	NR	\$235.41	52-209	NR	\$198.32	53-220	NR	\$188.37			
4 x 10	51-108	NR	\$290.65	52-210	NR	\$244.87	53-221	NR	\$232.53			
4 x 12	51-109	NR	\$381.93	52-211	NR	\$321.77	53-222	NR	\$305.61			
4 x 14	51-110	NR	\$792.74	52-212	NR	\$667.85	53-223	NR	\$634.23	54-85	NR	\$617.25
4 x 16	51-111	NR	\$968.19	52-213	NR	\$815.67	53-224	NR	\$774.63	54-86	NR	\$753.89
4 x 18				52-214	NR	\$1,024.53	53-225	NR	\$972.99	54-87	NR	\$946.94
4 x 20				52-215	NR	\$1,809.36	53-226	NR	\$1,718.35	54-88	NR	\$1,672.36
4 x 24				52-216	NR	\$1,868.96	53-227	NR	\$1,774.95	54-89	NR	\$1,727.44
6 x 8	51-112	NR	\$269.06	52-217	NR	\$226.68	53-228	NR	\$215.27			
6 x 10	51-113	NR	\$317.07	52-218	NR	\$267.13	53-229	NR	\$253.69			
6 x 12	51-114	NR	\$398.77	52-219	NR	\$335.95	53-230	NR	\$319.04			
6 x 14	51-115	NR	\$816.75	52-220	NR	\$688.08	53-231	NR	\$653.46	54-90	NR	\$635.98
6 x 16	51-116	NR	\$996.92	52-221	NR	\$839.86	53-232	NR	\$797.59	54-91	NR	\$776.24
6 x 18				52-222	NR	\$1,054.44	53-233	NR	\$1,001.42	54-92	NR	\$974.62
6 x 20				52-223	NR	\$1,866.04	53-234	NR	\$1,772.16	54-93	NR	\$1,724.72
6 x 24				52-224	NR	\$1,926.65	53-235	NR	\$1,829.74	54-94	NR	\$1,780.76
8 x 10	51-117	NR	\$350.72	52-225	NR	\$295.46	53-236	NR	\$280.60			
8 x 12	51-118	NR	\$427.60	52-226	NR	\$360.23	53-237	NR	\$342.12			
8 x 14	51-119	NR	\$840.79	52-227	NR	\$708.33	53-238	NR	\$672.68	54-95	NR	\$654.67
8 x 16	51-120	NR	\$1,020.92	52-228	NR	\$860.09	53-239	NR	\$816.80	54-96	NR	\$794.93
8 x 18				52-229	NR	\$1,087.14	53-240	NR	\$1,032.43	54-97	NR	\$1,004.80
8 x 20				52-230	NR	\$1,922.58	53-241	NR	\$1,825.86	54-98	NR	\$1,776.99
8 x 24				52-231	NR	\$1,985.90	53-242	NR	\$1,886.00	54-99	NR	\$1,835.52
10 x 12	51-121	NR	\$470.84	52-232	NR	\$396.67	53-243	NR	\$376.68			
10 x 14	51-122	NR	\$874.38	52-233	NR	\$736.63	53-244	NR	\$699.58	54-100	NR	\$680.85
10 x 16	51-123	NR	\$1,102.62	52-234	NR	\$928.92	53-245	NR	\$882.19	54-101	NR	\$858.57
10 x 18				52-235	NR	\$1,198.31	53-246	NR	\$1,138.04	54-102	NR	\$1,107.58
10 x 20				52-236	NR	\$1,981.26	53-247	NR	\$1,881.58	54-103	NR	\$1,831.22
10 x 24				52-237	NR	\$2,046.62	53-248	NR	\$1,943.62	54-104	NR	\$1,891.59
12 x 14	51-124	NR	\$893.63	52-238	NR	\$752.85	53-249	NR	\$714.95	54-105	NR	\$695.81
12 x 16	51-125	NR	\$1,124.23	52-239	NR	\$947.12	53-250	NR	\$899.47	54-106	NR	\$875.39
12 x 18				52-240	NR	\$1,217.54	53-251	NR	\$1,156.28	54-107	NR	\$1,125.33
12 x 20				52-241	NR	\$2,001.51	53-252	NR	\$1,900.79	54-108	NR	\$1,849.92
12 x 24				52-242	NR	\$2,110.67	53-253	NR	\$2,004.45	54-109	NR	\$1,950.81
12 x 30							53-254	NR	CALL	54-110	NR	CALL
14 x 16	51-126	NR	\$1,299.59	52-243	NR	\$1,094.86	53-255	NR	\$1,039.75	54-111	NR	\$1,011.91
14 x 18				52-244	NR	\$1,294.41	53-256	NR	\$1,229.26	54-112	NR	\$1,196.36
14 x 20				52-245	NR	\$2,073.51	53-257	NR	\$1,969.18	54-113	NR	\$1,916.47
14 x 24				52-246	NR	\$2,304.42	53-258	NR	\$2,188.48	54-114	NR	\$2,129.92
14 x 30							53-259	NR	CALL	54-115	NR	CALL
16 x 18				52-247	NR	\$1,375.38	53-260	NR	\$1,306.19	54-116	NR	\$1,271.22
16 x 20				52-248	NR	\$2,136.24	53-261	NR	\$2,028.69	54-117	NR	\$1,974.40
16 x 24				52-249	NR	\$2,440.56	53-262	NR	\$2,317.75	54-118	NR	\$2,255.71
16 x 30							53-263	NR	CALL	54-119	NR	CALL
18 x 20				52-250	NR	\$2,365.83	53-264	NR	\$2,246.70	54-120	NR	\$2,186.57
18 x 24				52-251	NR	\$2,560.65	53-265	NR	\$2,431.83	54-121	NR	\$2,366.74
18 x 30							53-266	NR	CALL	54-122	NR	CALL
20 x 24				52-252	NR	\$2,724.00	53-267	NR	\$2,586.94	54-123	NR	\$2,517.71
20 x 30							53-268	NR	CALL	54-124	NR	CALL
24 x 30							53-269	NR	CALL	54-125	NR	CALL

Pure-Blue® CIOD Drainage Fittings



REDUCER BUSHING
Spigot x Gasket

SIZE	DR14			DR18			DR25			DR41		
	PART #	NR	LIST PRICE	PART #	NR	LIST PRICE	PART #	NR	LIST PRICE	PART #	NR	LIST PRICE
8x4	51-26	NR	\$201.06	52-61	NR	\$169.38	53-53	NR	\$160.83			
10x4	51-28	NR	\$223.41	52-63	NR	\$188.22	53-55	NR	\$178.74			
12x4	51-31	NR	\$297.88	52-66	NR	\$250.94	53-58	NR	\$238.33			
14x4	51-35	NR	\$660.60	52-70	NR	\$556.53	53-62	NR	\$528.53	54-126	NR	\$514.39
16x4	51-40	NR	\$793.17	52-75	NR	\$668.22	53-67	NR	\$634.61	54-127	NR	\$617.62
18x4				52-81	NR	\$846.01	53-73	NR	\$803.43	54-128	NR	\$781.93
20x4				52-88	NR	\$1,358.15	53-80	NR	\$1,289.84	54-129	NR	\$1,255.31
24x4				52-96	NR	\$1,642.45	53-88	NR	\$1,559.84	54-130	NR	\$1,518.09
8x6	51-27	NR	\$229.78	52-62	NR	\$193.59	53-54	NR	\$183.85			
10x6	51-29	NR	\$254.64	52-64	NR	\$214.53	53-56	NR	\$203.71			
12x6	51-32	NR	\$326.71	52-67	NR	\$275.25	53-59	NR	\$261.39			
14x6	51-36	NR	\$682.21	52-71	NR	\$574.74	53-63	NR	\$545.85	54-131	NR	\$531.24
16x6	51-41	NR	\$816.75	52-76	NR	\$688.08	53-68	NR	\$653.46	54-132	NR	\$635.98
18x6				52-82	NR	\$870.69	53-74	NR	\$826.89	54-133	NR	\$804.76
20x6				52-89	NR	\$1,400.70	53-81	NR	\$1,330.23	54-134	NR	\$1,294.63
24x6				52-97	NR	\$1,693.77	53-89	NR	\$1,608.56	54-135	NR	\$1,565.51
10x8	51-30	NR	\$283.50	52-65	NR	\$238.83	53-57	NR	\$226.79			
12x8	51-33	NR	\$357.91	52-68	NR	\$301.52	53-60	NR	\$286.38			
14x8	51-37	NR	\$703.87	52-72	NR	\$592.99	53-64	NR	\$563.15	54-136	NR	\$548.08
16x8	51-42	NR	\$835.96	52-77	NR	\$704.26	53-69	NR	\$668.85	54-137	NR	\$650.96
18x8				52-83	NR	\$897.70	53-75	NR	\$852.53	54-138	NR	\$829.72
20x8				52-90	NR	\$1,443.21	53-82	NR	\$1,370.60	54-139	NR	\$1,333.93
24x8				52-98	NR	\$1,746.61	53-90	NR	\$1,658.74	54-140	NR	\$1,614.36
12x10	51-34	NR	\$389.12	52-69	NR	\$327.83	53-61	NR	\$311.35			
14x10	51-38	NR	\$737.48	52-73	NR	\$621.30	53-65	NR	\$590.01	54-141	NR	\$574.22
16x10	51-43	NR	\$944.06	52-78	NR	\$795.32	53-70	NR	\$755.34	54-142	NR	\$735.12
18x10				52-84	NR	\$1,004.76	53-76	NR	\$954.20	54-143	NR	\$928.67
20x10				52-91	NR	\$1,487.97	53-83	NR	\$1,413.10	54-144	NR	\$1,375.27
24x10				52-99	NR	\$1,799.99	53-91	NR	\$1,709.41	54-145	NR	\$1,663.67
14x12	51-39	NR	\$763.92	52-74	NR	\$643.58	53-66	NR	\$611.16	54-146	NR	\$594.81
16x12	51-44	NR	\$977.69	52-79	NR	\$823.66	53-71	NR	\$782.21	54-147	NR	\$761.27
18x12				52-85	NR	\$1,054.18	53-77	NR	\$1,001.14	54-148	NR	\$974.34
20x12				52-92	NR	\$1,499.31	53-84	NR	\$1,423.33	54-149	NR	\$1,385.24
24x12				52-100	NR	\$1,856.03	53-92	NR	\$1,762.66	54-150	NR	\$1,715.49
30x12							53-270	NR	CALL	54-151	NR	CALL
16x14	51-45	NR	\$1,129.04	52-80	NR	\$951.17	53-72	NR	\$903.29	54-152	NR	\$879.12
18x14				52-86	NR	\$1,107.73	53-78	NR	\$1,051.99	54-153	NR	\$1,023.84
20x14				52-93	NR	\$1,600.79	53-85	NR	\$1,520.23	54-154	NR	\$1,479.54
24x14				52-101	NR	\$2,048.20	53-93	NR	\$1,945.14	54-155	NR	\$1,893.08
30x14							53-271	NR	CALL	54-156	NR	CALL
18x16				52-87	NR	\$1,154.39	53-79	NR	\$1,096.29	54-157	NR	\$1,066.95
20x16				52-94	NR	\$1,693.92	53-86	NR	\$1,608.65	54-158	NR	\$1,565.60
24x16				52-102	NR	\$2,192.33	53-94	NR	\$2,082.02	54-159	NR	\$2,026.30
30x16							53-272	NR	CALL	54-160	NR	CALL
20x18				52-95	NR	\$1,972.95	53-87	NR	\$1,873.70	54-161	NR	\$1,823.55
24x18				52-103	NR	\$2,402.12	53-95	NR	\$2,281.26	54-162	NR	\$2,220.20
30x18							53-273	NR	CALL	54-163	NR	CALL
24x20				52-104	NR	\$2,440.56	53-96	NR	\$2,317.75	54-164	NR	\$2,255.71
30x20							53-274	NR	CALL	54-165	NR	CALL
30x24							53-275	NR	CALL	54-166	NR	CALL

*Reducers of more than one size may be multiple sections

Pure-Blue® CIOD Drainage Fittings



TEE

Gasket x Gasket x Gasket

SIZE	DR14			DR18			DR25			DR41		
	PART #		LIST PRICE	PART #		LIST PRICE	PART #		LIST PRICE	PART #		LIST PRICE
8 x 4	51-1	NR	\$432.92	52-1	NR	\$358.18	53-1	NR	\$346.35			
8 x 6	51-2	NR	\$486.52	52-2	NR	\$402.57	53-2	NR	\$389.24			
8 x 8	51-3	NR	\$525.82	52-3	NR	\$442.99	53-3	NR	\$420.67			
10 x 4	51-4	NR	\$546.63	52-4	NR	\$452.28	53-4	NR	\$437.30			
10 x 6	51-5	NR	\$561.73	52-5	NR	\$464.78	53-5	NR	\$449.42			
10 x 8	51-6	NR	\$601.46	52-6	NR	\$497.66	53-6	NR	\$481.23			
10 x 10	51-7	NR	\$724.83	52-7	NR	\$610.64	53-7	NR	\$579.92			
12 x 4	51-8	NR	\$705.36	52-8	NR	\$583.61	53-8	NR	\$564.32			
12 x 6	51-9	NR	\$755.12	52-9	NR	\$624.80	53-9	NR	\$604.15			
12 x 8	51-10	NR	\$836.63	52-10	NR	\$692.23	53-10	NR	\$669.37			
12 x 10	51-11	NR	\$949.80	52-11	NR	\$785.89	53-11	NR	\$759.91			
12 x 12	51-12	NR	\$1,015.31	52-12	NR	\$855.36	53-12	NR	\$812.29			
14 x 4	51-13	NR	\$1,605.01	52-13	NR	\$1,352.15	53-13	NR	\$1,284.11	54-167	NR	\$1,249.74
14 x 6	51-14	NR	\$1,653.71	52-14	NR	\$1,393.18	53-14	NR	\$1,323.08	54-168	NR	\$1,287.66
14 x 8	51-15	NR	\$2,056.23	52-15	NR	\$1,732.29	53-15	NR	\$1,645.13	54-169	NR	\$1,601.09
14 x 10	51-16	NR	\$2,146.05	52-16	NR	\$1,807.96	53-16	NR	\$1,716.92	54-170	NR	\$1,670.97
14 x 12	51-17	NR	\$2,266.47	52-17	NR	\$1,909.41	53-17	NR	\$1,813.33	54-171	NR	\$1,764.80
14 x 14	51-18	NR	\$2,415.16	52-18	NR	\$2,034.68	53-18	NR	\$1,932.30	54-172	NR	\$1,880.59
16 x 4	51-19	NR	\$2,181.87	52-19	NR	\$1,838.14	53-19	NR	\$1,745.64	54-173	NR	\$1,698.92
16 x 6	51-20	NR	\$2,248.52	52-20	NR	\$1,894.29	53-20	NR	\$1,798.97	54-174	NR	\$1,750.83
16 x 8	51-21	NR	\$2,302.38	52-21	NR	\$1,939.66	53-21	NR	\$1,842.04	54-175	NR	\$1,792.75
16 x 10	51-22	NR	\$2,345.95	52-22	NR	\$1,976.37	53-22	NR	\$1,876.91	54-176	NR	\$1,826.67
16 x 12	51-23	NR	\$2,369.03	52-23	NR	\$1,995.81	53-23	NR	\$1,895.38	54-177	NR	\$1,844.66
16 x 14	51-24	NR	\$2,684.39	52-24	NR	\$2,261.49	53-24	NR	\$2,147.68	54-178	NR	\$2,090.20
16 x 16	51-25	NR	\$2,722.83	52-25	NR	\$2,293.87	53-25	NR	\$2,178.45	54-179	NR	\$2,120.15
18 x 4				52-26	NR	\$3,108.18	53-26	NR	\$2,951.79	54-180	NR	\$2,872.79
18 x 6				52-27	NR	\$3,203.22	53-27	NR	\$3,042.06	54-181	NR	\$2,960.64
18 x 8				52-28	NR	\$3,255.06	53-28	NR	\$3,091.26	54-182	NR	\$3,008.52
18 x 10				52-29	NR	\$3,445.14	53-29	NR	\$3,271.78	54-183	NR	\$3,184.21
18 x 12				52-30	NR	\$3,646.02	53-30	NR	\$3,462.56	54-184	NR	\$3,369.89
18 x 14				52-31	NR	\$4,123.37	53-31	NR	\$3,915.88	54-185	NR	\$3,811.07
18 x 16				52-32	NR	\$4,397.70	53-32	NR	\$4,176.40	54-186	NR	\$4,064.62
18 x 18				52-33	NR	\$4,615.85	53-33	NR	\$4,383.58	54-187	NR	\$4,266.27
20 x 4				52-34	NR	\$3,574.75	53-34	NR	\$3,394.86	54-188	NR	\$3,304.00
20 x 6				52-35	NR	\$3,683.31	53-35	NR	\$3,499.48	54-189	NR	\$3,405.82
20 x 8				52-36	NR	\$3,775.62	53-36	NR	\$3,585.64	54-190	NR	\$3,489.67
20 x 10				52-37	NR	\$3,894.44	53-37	NR	\$3,698.46	54-191	NR	\$3,599.48
20 x 12				52-38	NR	\$4,112.55	53-38	NR	\$3,905.65	54-192	NR	\$3,801.11
20 x 14				52-39	NR	\$4,391.22	53-39	NR	\$4,170.25	54-193	NR	\$4,058.63
20 x 16				52-40	NR	\$4,605.04	53-40	NR	\$4,373.31	54-194	NR	\$4,256.25
20 x 18				52-41	NR	\$5,207.69	53-41	NR	\$4,945.63	54-195	NR	\$4,813.27
20 x 20				52-42	NR	\$5,361.03	53-42	NR	\$5,091.26	54-196	NR	\$4,955.00
24 x 4				52-43	NR	\$5,129.93	53-43	NR	\$4,871.80	54-197	NR	\$4,741.40
24 x 6				52-44	NR	\$5,287.62	53-44	NR	\$5,021.53	54-198	NR	\$4,887.14
24 x 8				52-45	NR	\$5,352.41	53-45	NR	\$5,083.05	54-199	NR	\$4,947.01
24 x 10				52-46	NR	\$5,423.68	53-46	NR	\$5,150.76	54-200	NR	\$5,012.91
24 x 12				52-47	NR	\$5,462.55	53-47	NR	\$5,187.68	54-201	NR	\$5,048.83
24 x 14				52-48	NR	\$5,672.08	53-48	NR	\$5,386.65	54-202	NR	\$5,242.49
24 x 16				52-49	NR	\$5,782.22	53-49	NR	\$5,491.30	54-203	NR	\$5,344.33
24 x 18				52-50	NR	\$7,205.67	53-50	NR	\$6,843.06	54-204	NR	\$6,659.91
24 x 20				52-51	NR	\$7,298.53	53-51	NR	\$6,931.26	54-205	NR	\$6,745.75
24 x 24				52-52	NR	\$7,486.47	53-52	NR	\$7,109.72	54-206	NR	\$6,919.44

Pure-Blue® CIOD Drainage Fittings



TEE - con't
Gasket x Gasket x Gasket

SIZE	DR14		DR18		DR25		DR41			
	PART #	LIST PRICE	PART #	LIST PRICE	PART #	LIST PRICE	PART #	LIST PRICE		
30 x 4					53-276	NR	CALL	54-207	NR	CALL
30 x 6					53-277	NR	CALL	54-208	NR	CALL
30 x 8					53-278	NR	CALL	54-209	NR	CALL
30 x 10					53-279	NR	CALL	54-210	NR	CALL
30 x 12					53-280	NR	CALL	54-211	NR	CALL
30 x 14					53-281	NR	CALL	54-212	NR	CALL
30 x 16					53-282	NR	CALL	54-213	NR	CALL
30 x 18					53-283	NR	CALL	54-214	NR	CALL
30 x 20					53-284	NR	CALL	54-215	NR	CALL
30 x 24					53-285	NR	CALL	54-216	NR	CALL
30 x 30					53-286	NR	CALL	54-217	NR	CALL
36 x 4					53-287	NR	CALL	54-218	NR	CALL
36 x 6					53-288	NR	CALL	54-219	NR	CALL
36 x 8					53-289	NR	CALL	54-220	NR	CALL
36 x 10					53-290	NR	CALL	54-221	NR	CALL
36 x 12					53-291	NR	CALL	54-222	NR	CALL
36 x 14					53-292	NR	CALL	54-223	NR	CALL
36 x 16					53-293	NR	CALL	54-224	NR	CALL
36 x 18					53-294	NR	CALL	54-225	NR	CALL
36 x 20					53-295	NR	CALL	54-226	NR	CALL
36 x 24					53-296	NR	CALL	54-227	NR	CALL
36 x 30					53-297	NR	CALL	54-228	NR	CALL
36 x 36					53-298	NR	CALL	54-229	NR	CALL



WYE
Gasket x Gasket x Gasket

SIZE	DR14		DR18		DR25		DR41	
	PART #	LIST PRICE	PART #	LIST PRICE	PART #	LIST PRICE	PART #	LIST PRICE
8 x 4	51-127	NR \$473.14	52-253	NR \$391.48	53-299	NR \$398.62		
8 x 6	51-128	NR \$502.00	52-254	NR \$415.36	53-300	NR \$422.94		
8 x 8	51-129	NR \$518.26	52-255	NR \$436.62	53-102	NR \$436.62		
10 x 4	51-130	NR \$562.61	52-256	NR \$423.20	53-301	NR \$450.18		
10 x 6	51-131	NR \$599.60	52-257	NR \$451.02	53-302	NR \$479.68		
10 x 8	51-132	NR \$637.39	52-258	NR \$527.40	53-303	NR \$509.97		
10 x 10	51-133	NR \$729.90	52-259	NR \$614.91	53-304	NR \$583.96		
12 x 4	51-134	NR \$740.07	52-260	NR \$612.34	53-305	NR \$592.13		
12 x 6	51-135	NR \$792.89	52-261	NR \$656.05	53-306	NR \$634.42		
12 x 8	51-136	NR \$879.38	52-262	NR \$727.63	53-106	NR \$703.24		
12 x 10	51-137	NR \$1,006.36	52-263	NR \$832.69	53-307	NR \$805.08		
12 x 12	51-138	NR \$1,058.29	52-264	NR \$891.57	53-105	NR \$846.70		
14 x 4			52-265	NR \$1,291.40	53-308	NR \$1,226.42	54-230	NR \$1,193.59
14 x 6			52-266	NR \$1,331.08	53-309	NR \$1,264.10	54-231	NR \$1,230.27
14 x 8			52-267	NR \$1,392.68	53-310	NR \$1,322.59	54-232	NR \$1,287.20
14 x 10			52-268	NR \$1,459.49	53-311	NR \$1,386.04	54-233	NR \$1,348.94
14 x 12			52-269	NR \$1,674.56	53-312	NR \$1,590.30	54-234	NR \$1,547.73
14 x 14			52-270	NR \$1,805.05	53-313	NR \$1,714.23	54-235	NR \$1,668.35
16 x 4			52-271	NR \$1,634.89	53-314	NR \$1,552.61	54-236	NR \$1,511.07
16 x 6			52-272	NR \$1,684.98	53-315	NR \$1,597.97	54-237	NR \$1,555.20
16 x 8			52-273	NR \$1,748.67	53-316	NR \$1,660.68	54-238	NR \$1,616.23
16 x 10			52-274	NR \$1,834.27	53-317	NR \$1,741.98	54-239	NR \$1,695.37
16 x 12			52-275	NR \$1,917.79	53-318	NR \$1,821.28	54-240	NR \$1,772.55
16 x 14			52-276	NR \$1,949.12	53-319	NR \$1,851.05	54-241	NR \$1,801.51
16 x 16			52-277	NR \$2,234.14	53-320	NR \$2,121.71	54-242	NR \$2,064.93

Pure-Blue® CIOD Drainage Fittings



WYE - con't
Gasket x Gasket x Gasket

SIZE	DR14		DR18		DR25		DR41	
	PART #	LIST PRICE	PART #	LIST PRICE	PART #	LIST PRICE	PART #	LIST PRICE
18 x 4			52-278	NR \$2,964.91	53-321	NR \$2,815.73	54-243	NR \$2,740.37
18 x 6			52-279	NR \$3,056.79	53-322	NR \$2,902.97	54-244	NR \$2,825.26
18 x 8			52-280	NR \$3,151.77	53-323	NR \$2,993.19	54-245	NR \$2,913.07
18 x 10			52-281	NR \$3,267.68	53-324	NR \$3,103.24	54-246	NR \$3,020.19
18 x 12			52-282	NR \$3,436.79	53-325	NR \$3,263.85	54-247	NR \$3,176.50
18 x 14			52-283	NR \$3,599.67	53-326	NR \$3,418.53	54-248	NR \$3,327.04
18 x 16			52-284	NR \$3,800.11	53-327	NR \$3,608.88	54-249	NR \$3,512.30
18 x 18			52-285	NR \$4,054.83	53-328	NR \$3,850.80	54-250	NR \$3,747.73
20 x 4			52-286	NR \$3,689.45	53-329	NR \$3,503.79	54-251	NR \$3,410.02
20 x 6			52-287	NR \$3,803.23	53-330	NR \$3,611.86	54-252	NR \$3,515.18
20 x 8			52-288	NR \$3,921.22	53-331	NR \$3,723.88	54-253	NR \$3,624.21
20 x 10			52-289	NR \$4,042.30	53-332	NR \$3,838.89	54-254	NR \$3,736.14
20 x 12			52-290	NR \$4,166.55	53-333	NR \$3,956.89	54-255	NR \$3,850.98
20 x 14			52-291	NR \$4,372.21	53-334	NR \$4,152.19	54-256	NR \$4,041.06
20 x 16			52-292	NR \$4,544.47	53-335	NR \$4,315.78	54-257	NR \$4,200.27
20 x 18			52-293	NR \$4,867.06	53-336	NR \$4,588.67	54-258	NR \$4,465.86
20 x 20			52-294	NR \$5,082.12	53-337	NR \$4,826.39	54-259	NR \$4,697.22
24 x 4			52-295	NR \$4,612.32	53-338	NR \$4,380.22	54-260	NR \$4,262.98
24 x 6			52-296	NR \$4,754.29	53-339	NR \$4,515.06	54-261	NR \$4,394.21
24 x 8			52-297	NR \$4,901.51	53-340	NR \$4,654.87	54-262	NR \$4,530.29
24 x 10			52-298	NR \$5,052.88	53-341	NR \$4,798.63	54-263	NR \$4,670.20
24 x 12			52-299	NR \$5,208.43	53-342	NR \$4,946.36	54-264	NR \$4,813.97
24 x 14			52-300	NR \$5,465.26	53-343	NR \$5,190.24	54-265	NR \$5,051.34
24 x 16			52-301	NR \$5,680.33	53-344	NR \$5,394.47	54-266	NR \$5,250.09
24 x 18			52-302	NR \$6,084.36	53-345	NR \$5,778.17	54-267	NR \$5,623.53
24 x 20			52-303	NR \$6,352.64	53-346	NR \$6,032.98	54-268	NR \$5,871.52
24 x 24			52-304	NR \$7,940.55	53-347	NR \$7,540.97	54-269	NR \$7,339.15
30 x 4					53-348	NR CALL	54-270	NR CALL
30 x 6					53-349	NR CALL	54-271	NR CALL
30 x 8					53-350	NR CALL	54-272	NR CALL
30 x 10					53-351	NR CALL	54-273	NR CALL
30 x 12					53-352	NR CALL	54-274	NR CALL
30 x 14					53-353	NR CALL	54-275	NR CALL
30 x 16					53-354	NR CALL	54-276	NR CALL
30 x 18					53-355	NR CALL	54-277	NR CALL
30 x 20					53-356	NR CALL	54-278	NR CALL
30 x 24					53-357	NR CALL	54-279	NR CALL
30 x 30					53-358	NR CALL	54-280	NR CALL
36 x 4					53-359	NR CALL	54-281	NR CALL
36 x 6					53-360	NR CALL	54-282	NR CALL
36 x 8					53-361	NR CALL	54-283	NR CALL
36 x 10					53-362	NR CALL	54-284	NR CALL
36 x 12					53-363	NR CALL	54-285	NR CALL
36 x 14					53-364	NR CALL	54-286	NR CALL
36 x 16					53-365	NR CALL	54-287	NR CALL
36 x 18					53-366	NR CALL	54-288	NR CALL
36 x 20					53-367	NR CALL	54-289	NR CALL
36 x 24					53-368	NR CALL	54-290	NR CALL
36 x 30					53-369	NR CALL	54-291	NR CALL
36 x 36					53-370	NR CALL	54-292	NR CALL