

HARCO FABRICATED DRAINAGE PRODUCTS DISTRIBUTION LIST PRICE SHEET

Custom Drain Basins with Grate^{1, 2, 3, 4}

Product Description	Outlet Sizes	Overall Height 5' or Less		Overall Height > 5' to 10'	
		Part No	List Price	Part No	List Price
8" Drain Basin w/ Round Grate	4"- 8"	92-1008	\$331.00	92-1108	\$402.00
10" Drain Basin w/ Round Grate	4"-10"	92-1010	\$454.00	92-1110	\$559.00
12" Drain Basin w/ Round or Square Hinged Grate	4"-12"	92-1012	\$665.00	92-1112	\$856.00
15" Drain Basin w/ Round or Square Hinged Grate	4"-15"	92-1015	\$952.00	92-1115	\$1,087.00
18" Drain Basin w/ Round Grate	4"-18"	92-1018	\$1,116.00	92-1118	\$1,255.00
24" Drain Basin w/ Round Grate	4"-24"	92-1024	\$1,400.00	92-1124	\$1,567.00
30" Drain Basin w/ Round Grate	4"-30"	92-1030	\$2,256.00	92-1130	\$2,752.00
36" Drain Basin w/ Round Grate	4"-30"	92-1036	Call	92-1136	Call



Custom Drain Basin without Grate⁴

Product Description	Outlet Sizes	Overall Height 5' or Less		Overall Height > 5' to 10'	
		Part No	List Price	Part No	List Price
8" Drain Basin without Grate	4"- 8"	92-4008	\$285.00	92-4108	\$355.00
10" Drain Basin without Grate	4"-10"	92-4010	\$376.00	92-4110	\$487.00
12" Drain Basin without Grate	4"-12"	92-4012	\$487.00	92-4112	\$661.00
15" Drain Basin without Grate	4"-15"	92-4015	\$704.00	92-4115	\$902.00
18" Drain Basin without Grate	4"-18"	92-4018	\$770.00	92-4118	\$989.00
24" Drain Basin without Grate	4"-24"	92-4024	\$1,054.00	92-4124	\$1,318.00
30" Drain Basin without Grate	4"-30"	92-4030	\$1,713.00	92-4130	\$2,198.00
36" Drain Basin without Grate	4"-30"	92-4036	Call	92-4136	Call



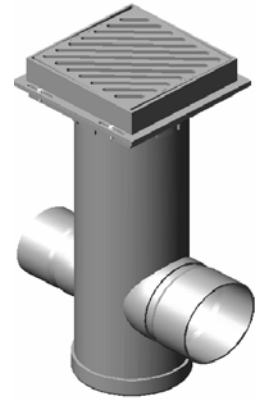
Notes:

1. Prices include pedestrian, standard, or solid frame & grate / cover or one-piece drop in grate
2. Surcharge for domed grate options, see page 4.
3. Surcharge for locking grate options, see page 4.
4. Basins taller than 8'-0" (96") are provided in 2 pieces and require field assembly.

HARRINGTON CORPORATION PO BOX 10335 LYNCHBURG, VIRGINIA 24506-0335
PHONE 800-825-7094 FAX 434-845-7094 E-MAIL: sales@harcofittings.com web: www.harcofittings.com

Custom Drain Basin with Traffic Gate^{3, 4}

Product Description	Outlet Sizes	Overall Height 5' or Less		Overall Height > 5' to 10'	
		Part No	List Price	Part No	List Price
2x2 Square Traffic Gate					
12" Drain Basin w/ Square Traffic Gate	4"-12"	92-1212	\$722.00	92-1312	\$914.00
15" Drain Basin w/ Square Traffic Gate	4"-15"	92-1215	\$1,008.00	92-1315	\$1,133.00
18" Drain Basin w/ Square Traffic Gate	4"-18"	92-1218	\$1,177.00	92-1318	\$1,316.00
24" Drain Basin w/ Square Traffic Gate	4"-24"	92-1224	\$1,459.00	92-1324	\$1,626.00
30" Drain Basin w/ Square Traffic Gate	4"-30"	92-1230	\$2,314.00	92-1330	\$2,810.00
2x3 Rectangular Traffic Gate					
18" Drain Basin w/ Rectangular Traffic Gate	4"-15"	92-1418	\$1,237.00	92-1518	\$1,375.00
24" Drain Basin w/ Rectangular Traffic Gate	4"-18"	92-1424	\$1,519.00	92-1524	\$1,684.00
30" Drain Basin w/ Rectangular Traffic Gate	4"-24"	92-1430	\$2,371.00	92-1530	\$2,873.00



Custom Drain Basin with Curb Inlet Gate^{3, 4, 5}

Product Description	Outlet Sizes	Overall Height 5' or Less		Overall Height > 5' to 10'	
		Part No	List Price	Part No	List Price
2x2 Square Curb Inlet Gate					
12" Drain Basin w/ Square Curb Inlet Gate	4"-12"	92-1612	\$1,481.00	92-1712	\$1,577.00
15" Drain Basin w/ Square Curb Inlet Gate	4"-15"	92-1615	\$1,601.00	92-1715	\$1,804.00
18" Drain Basin w/ Square Curb Inlet Gate	4"-18"	92-1618	\$1,804.00	92-1718	\$2,030.00
24" Drain Basin w/ Square Curb Inlet Gate	4"-24"	92-1624	\$2,056.00	92-1724	\$2,330.00
30" Drain Basin w/ Square Curb Inlet Gate	4"-30"	92-1630	\$2,780.00	92-1730	\$3,008.00
2x3 Rectangular Curb Inlet Gate					
18" Drain Basin w/ Rectangular Curb Inlet Gate	4"-15"	92-1818	\$1,954.00	92-1918	\$2,220.00
24" Drain Basin w/ Rectangular Curb Inlet Gate	4"-18"	92-1824	\$2,253.00	92-1924	\$2,558.00
30" Drain Basin w/ Rectangular Curb Inlet Gate	4"-24"	92-1830	\$2,955.00	92-1930	\$3,133.00



Notes:

3. Surcharge for locking grate options, see page 4.
4. Basins taller than 8'-0" (96") are provided in 2 pieces and require field assembly.
5. Choice of Standard, Diagonal or High Flow Grate where available

HARRINGTON CORPORATION PO BOX 10335 LYNCHBURG, VIRGINIA 24506-0335
PHONE 800-825-7094 FAX 434-845-7094 E-MAIL: sales@harcofittings.com web: www.harcofittings.com

Inline Drain with Grate¹

Product Description	Outlet Sizes	Part No	List Price
8" In-line Drain w/ Round Grate	4"- 8"	93-aa08xx	\$101.00
10" In-line Drain w/ Round Grate	4"-10"	93-aa10xx	\$127.00
12" In-line Drain w/ Round or Square-Hinged Grate	4"-12"	93-aa12xx	\$404.00
15" In-line Drain w/ Round or Square-Hinged Grate	4"-15"	93-aa15xx	\$477.00
18" In-line Drain w/ Round Grate	4"-18"	93-aa18xx	\$579.00
24" In-line Drain w/ Round Grate	4"-24"	93-aa24xx	\$1,079.00
30" In-line Drain w/ Round Grate	4"-30"	93-aa30xx	\$1,304.00
36" In-line Drain w/ Round Grate	4"-36"	93-aa36xx	Call



Inline Drain without Grate

Product Description	Outlet Sizes	Part No	List Price
8" In-line Drain without Grate	4"- 8"	95-aa08xx	\$66.00
10" In-line Drain without Grate	4"-10"	95-aa10xx	\$86.00
12" In-line Drain without Grate	4"-12"	95-aa12xx	\$285.00
15" In-line Drain without Grate	4"-15"	95-aa15xx	\$308.00
18" In-line Drain without Grate	4"-18"	95-aa18xx	\$374.00
24" In-line Drain without Grate	4"-24"	95-aa24xx	\$759.00
30" In-line Drain without Grate	4"-30"	95-aa30xx	\$932.00
36" In-line Drain without Grate	4"-36"	95-aa36xx	Call



For part numbers for Inline Drains, insert for "aa", number type of outlet below

aa	Type of Outlet	aa	Type of Outlet
10	HDPE Hub	27	SDR 26 Swr Gsk
22	F794 Profile Hub	34	C900 Hub
24	SDR 35 Swr Hub	36	C900 Gsk
25	SDR 35 Swr Gsk	40	IPS Hub
26	SDR 26 Swr Hub	42	IPS Gsk

For outlet size, insert for "xx", diameter size in two digits, (i.e. 04, 06, 08, 10, 12, etc.)

Example: 12 inline drain for HDPE hub, with 8" outlet and standard round grate: Part Number = **93-101208**
 18 inline drain for SDR 35 GSK with 15" outlet without a grate: Part Number = **95-251815**

Notes:

1. Prices include pedestrian, standard, or solid frame & grate / cover or one-piece drop in grate

Drop-in Grates

These Ductile Iron grates are for light duty turf and landscape applications only.

Size	Part No	Open In ²	Price
6" Round Drop-In	94-3806	6.0	\$48.00
8" Round Drop-In	94-3808	16.0	\$54.00
10" Round Drop-In	94-3810	26.0	\$71.00
12" Round Drop-In	94-3812	37.5	\$94.00
15" Round Drop-In	94-3815	63.0	\$145.00
18" Round Drop-In	94-3818	96.0	\$190.00
24" Round Drop-In	94-3824	164.0	\$331.00
30" Round Drop-In	94-3830	277.0	\$630.00



Riser Sections

Used to add height to existing structure.

Riser Section Diameter	Part No	Price Per Foot
8" Riser Diameter	92-3008x	\$25.00
10" Riser Diameter	92-3010x	\$26.00
12" Riser Diameter	92-3012x	\$46.00
15" Riser Diameter	92-3015x	\$49.00
18" Riser Diameter	92-3018x	\$56.00
24" Riser Diameter	92-3024x	\$71.00
30" Riser Diameter	92-3030x	\$144.00
36" Riser Diameter	92-3036x	Call



For part number, insert for "x," height in feet
Example: 12" Riser, two feet tall:
Part number = 92-30122

Surcharge for Domed Grate Option

Product Description	Part No	Surcharge to Inline / Basin List Price
8" Round Domed Grate	94-7208	\$30.00
10" Round Domed Grate	94-7210	\$35.00
12" Round Domed Grate	94-7212	\$51.00
15" Round Domed Grate	94-7215	\$101.00
18" Round Domed Grate	94-7218	\$185.00
24" Round Domed Grate	94-7224	\$226.00
30" Round Domed Grate	94-7230	\$447.00



Surcharge for Locking Grate Options

Product Description	Part No	Surcharge to Inline / Basin List Price
Drop-In Grate Locking Option	94-51	\$30.00
Round and Square-Hinged Grate Locking Option	94-50	\$80.00
Traffic and Curb Inlet Grate Locking Option	94-52	\$250.00

Terms and Conditions

Freight Policy

For HARCO Products shown on this price sheet: Freight prepaid on orders \$2500 and over, F.O.B. HARCO facility, delivered within the continental U.S.

Return Policy

- 1) Due to the fact that HARCO drainage structures are custom made, they are **Non-cancelable** and **Non-returnable**.
- 2) All return requests of inline drains or grates must be pre-approved by HARCO management.
- 3) A 25% restocking fee applies to approved returns.
- 4) All return freight to be paid by customer.

HARRINGTON CORPORATION PO BOX 10335 LYNCHBURG, VIRGINIA 24506-0335
PHONE 800-825-7094 FAX 434-845-7094 E-MAIL: sales@harcofittings.com web: www.harcofittings.com