

PRICE LIST

HARCO FABRICATED DRAINAGE PRODUCTS

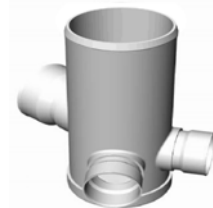
Drain Basin with Round Grate^{1, 2, 3}

Basin with Round Grate	Outlet Sizes	Part No	Height 12"- 60"	Part No	Height 61"- 120"
8" Drain Basin w/Grate	4"- 8"	92-1008	\$288.33	92-1108	\$371.67
10" Drain Basin w/Grate	4"-10"	92-1010	\$391.67	92-1110	\$495.00
12" Drain Basin w/Grate	4"-12"	92-1012	\$576.67	92-1112	\$743.33
15" Drain Basin w/Grate	4"-15"	92-1015	\$825.00	92-1115	\$1,030.00
18" Drain Basin w/Grate	4"-18"	92-1018	\$970.00	92-1118	\$1,091.67
24" Drain Basin w/Grate	4"-24"	92-1024	\$1,216.67	92-1124	\$1,361.67
30" Drain Basin w/Grate	4"-30"	92-1030	\$1,958.33	92-1130	\$2,390.00
36" Drain Basin w/Grate	4"-30"	92-1036	Call	92-1136	Call



Drain Basin without Grate^{2, 3}

Basin without Grate	Outlet Sizes	Part No	Height 12"- 60"	Part No	Height 61"- 120"
8" Drain Basin	4"- 8"	92-4008	\$248.33	92-4108	\$306.67
10" Drain Basin	4"-10"	92-4010	\$325.00	92-4110	\$421.67
12" Drain Basin	4"-12"	92-4012	\$421.67	92-4112	\$573.33
15" Drain Basin	4"-15"	92-4015	\$611.67	92-4115	\$783.33
18" Drain Basin	4"-18"	92-4018	\$668.33	92-4118	\$858.33
24" Drain Basin	4"-24"	92-4024	\$915.00	92-4124	\$1,145.00
30" Drain Basin	4"-30"	92-4030	\$1,488.33	92-4130	\$1,908.33
36" Drain Basin	4"-30"	92-4036	Call	92-4136	Call



Notes:

- Prices include standard round H-10 or H-25 frame & cover or 1-piece Drop-in Grate. Domed, Solid, and Hinged Grates at extra charge: See Pg. 5.
- Drain Basins include 1 to 5 outlets. Contact Factory for price for +5 outlets.
- Basins taller than 8'-0" (96") are provided in 2 pieces and require field assembly.

HARRINGTON CORPORATION PO BOX 10335 LYNCHBURG, VIRGINIA 24506-0335 PHONE 800-825-7094 FAX 434-845-7094 E-MAIL: sales@harcofittings.com web: www.harcofittings.com

Drain Basin with Traffic Grate^{2, 3, 4}

Basin with Traffic Grate	Outlet Sizes	Part No	Height 12"- 60"	Part No	Height 61"- 120"
2x2 Square Grate					
12" Traffic Basin w/Square Grate	4"-12"	92-1212	\$628.33	92-1312	\$793.33
15" Traffic Basin w/Square Grate	4"-15"	92-1215	\$876.67	92-1315	\$1,081.67
18" Traffic Basin w/Square Grate	4"-18"	92-1218	\$1,021.67	92-1318	\$1,143.33
24" Traffic Basin w/Square Grate	4"-24"	92-1224	\$1,266.67	92-1324	\$1,411.67
30" Traffic Basin w/Square Grate	4"-30"	92-1230	\$2,010.00	92-1330	\$2,441.67
2x3 Rectangle Grate					
18" Traffic Basin w/Rectangle Grate	4"-15"	92-1418	\$1,073.33	92-1518	\$1,195.00
24" Traffic Basin w/Rectangle Grate	4"-18"	92-1424	\$1,318.33	92-1524	\$1,463.33
30" Traffic Basin w/Rectangle Grate	4"-24"	92-1430	\$2,060.00	92-1530	\$2,441.67



Drain Basin with Curb Inlet Grate^{2, 3, 4}

Basin with Curb Inlet Grate	Outlet Sizes	Part No	Height 12"- 60"	Part No	Height 61"- 120"
2x2 Square Grate					
12" Curb Inlet w/Square Grate	4"-12"	92-1612	\$1,216.67	92-1712	\$1,361.67
15" Curb Inlet w/Square Grate	4"-15"	92-1615	\$1,318.33	92-1715	\$1,485.00
18" Curb Inlet w/Square Grate	4"-18"	92-1618	\$1,485.00	92-1718	\$1,670.00
24" Curb Inlet w/Square Grate	4"-24"	92-1624	\$1,691.67	92-1724	\$1,915.00
30" Curb Inlet w/Square Grate	4"-30"	92-1630	\$2,288.33	92-1730	\$2,473.33
2x3 Rectangle Grate					
18" Curb Inlet w/Rectangle Grate	4"-15"	92-1818	\$1,606.67	92-1918	\$1,855.00
24" Curb Inlet w/Rectangle Grate	4"-18"	92-1824	\$1,855.00	92-1924	\$2,103.33
30" Curb Inlet w/Rectangle Grate	4"-24"	92-1830	\$2,431.67	92-1930	\$2,576.67



Notes:

2. Drain Basins include 1 to 5 outlets. Contact Factory for price for +5 outlets.
3. Basins <8' (96") are 2-piece and require field assembly
4. Choice of H25 Standard, Diagonal or High Flow Grate where available

HARRINGTON CORPORATION PO BOX 10335 LYNCHBURG, VIRGINIA 24506-0335
 PHONE 800-825-7094 FAX 434-845-7094 E-MAIL: sales@harcofittings.com web: www.harcofittings.com

Inline Drain with Round Grate¹

In-line Drain with Grate	Part No	Outlet Sizes	Price
8" In-line Drain w/Grate	93-aa08xx	4"- 8"	\$86.67
10" In-line Drain w/Grate	93-aa10xx	4"-10"	\$110.00
12" In-line Drain w/Grate	93-aa12xx	4"-12"	\$351.67
15" In-line Drain w/Grate	93-aa15xx	4"-15"	\$413.33
18" In-line Drain w/Grate	93-aa18xx	4"-18"	\$503.33
24" In-line Drain w/Grate	93-aa24xx	4"-24"	\$936.67
30" In-line Drain w/Grate	93-aa30xx	4"-30"	\$1,131.67
36" In-line Drain w/Grate	93-aa36xx	4"-36"	Call



Inline Drain without Grate

In-line Drain	Part No	Outlet Sizes	Price
8" In-line Drain	95-aa08xx	4"- 8"	\$57.00
10" In-line Drain	95-aa10xx	4"-10"	\$77.00
12" In-line Drain	95-aa12xx	4"-12"	\$248.00
15" In-line Drain	95-aa15xx	4"-15"	\$267.00
18" In-line Drain	95-aa18xx	4"-18"	\$325.00
24" In-line Drain	95-aa24xx	4"-24"	\$660.00
30" In-line Drain	95-aa30xx	4"-30"	\$808.00
36" In-line Drain	95-aa36xx	4"-36"	Call



For part numbers for Inline Drains, insert for "aa", number type of outlet below

aa	Type of Outlet	aa	Type of Outlet
10	HDPE Hub	27	SDR 26 Swr Gsk
20	A2000 Hub	34	C900 Hub
22	F794 Profile Hub	36	C900 Gsk
24	SDR 35 Swr Hub	40	IPS Hub
25	SDR 35 Swr Gsk	42	IPS Gsk
26	SDR 26 Swr Hub		

For outlet size, insert for "xx", diameter size in two digits, (i.e. 04, 06, 08, 10, 12, etc.)

Example: 12 inline drain for HDPE hub, with 8" outlet and standard round grate:
 18 inline drain for SDR 35 GSK with 15" outlet without a grate:

Part Number = **93-101208**

Part Number = **95-251815**

Notes:

- Prices include standard round H-10 or H-25 frame & cover or 1-piece Drop-in Grate. Domed, Solid, and Hinged Grates at extra charge: See Pg. 5.

HARRINGTON CORPORATION PO BOX 10335 LYNCHBURG, VIRGINIA 24506-0335 PHONE 800-825-7094 FAX 434-845-7094 E-MAIL: sales@harcofittings.com web: www.harcofittings.com
--

Inline Risers⁵

In-line Riser Option	Part No	1st Foot	Add'l Feet
8" Riser Extension	92-3008x	\$41.67	\$21.67
10" Riser Extension	92-3010x	\$49.17	\$21.67
12" Riser Extension	92-3012x	\$63.33	\$41.67
15" Riser Extension	92-3015x	\$115.83	\$41.67
18" Riser Extension	92-3018x	\$171.67	\$48.33
24" Riser Extension	92-3024x	\$340.00	\$63.33
30" Riser Extension	92-3030x	\$495.00	\$125.00
36" Riser Extension	92-3036x	Call	Call

For part number, insert for "x," height in feet (Example: 12" Riser, two feet tall: Part number = **92-30122**)

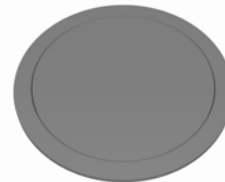


Optional UPCHARGE from Standard Round Grates

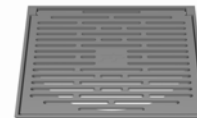
Upcharge for Domed One-Piece Drop-In	Add
8" Round Domed Drop-In Grate Upcharge	\$25.00
10" Round Domed Drop-In Grate Upcharge	\$30.00
12" Round Domed Drop-In Grate Upcharge	\$45.00
15" Round Domed Drop-In Grate Upcharge	\$86.67
18" Round Domed Drop-In Grate Upcharge	\$161.67
24" Round Domed Drop-In Grate Upcharge	\$197.00
30" Round Domed Drop-In Grate Upcharge	\$387.00



Upcharge for Frame and Solid Cover	Add
8" Solid Round Grate and Frame Upcharge	\$16.67
10" Solid Round Grate and Frame Upcharge	\$16.67
12" Solid Round Grate and Frame Upcharge	\$50.00
15" Solid Round Grate and Frame Upcharge	\$66.67
18" Solid Round Grate and Frame Upcharge	\$83.33
24" Solid Round Grate and Frame Upcharge	\$116.67
30" Solid Round Grate and Frame Upcharge	\$116.67
36" Solid Round Grate and Frame Upcharge	\$183.33



Upcharge for Square Frame, Cover, and Hinge	Add
12" Pedestrian Square Hinged Grate Upcharge	\$0.00
15" Pedestrian Square Hinged Grate Upcharge	\$0.00
12" Standard Square Hinged Grate Upcharge	\$0.00
15" Standard Square Hinged Grate Upcharge	\$0.00
12" Solid Square Hinged Grate Upcharge	\$50.00
15" Solid Square Hinged Grate Upcharge	\$66.67



Grate Locking Options	Part No	Adder Price
Drop-In Locking Assembly	94-51	\$8.33
Locking Assembly for Grate	94-50	\$63.33

Notes:

5. Risers are sold in 1 foot increments. Field adjustments may be necessary.

Round Grates with Frames^{6, 7, 8}

Pedestrian H-10 (Frame & Cover except 8" and 10", which are one-piece)

Size	Part No	Rating	Wt (lbs)	Open In ²	Price
8" Round Pedestrian	94-3008	H-10	6	17.0	\$16.67
10" Round Pedestrian	94-3010	H-10	11	27.0	\$33.33
12" Round Pedestrian	94-3012	H-10	60	36.0	\$228.33
15" Round Pedestrian	94-3015	H-10	81	47.0	\$266.67
18" Round Pedestrian	94-3018	H-10	108	74.0	\$288.33
24" Round Pedestrian	94-3024	H-10	159	154.0	\$495.00



Standard H-25 (Frame & Cover except 8" and 10", which are one-piece)

Size	Part No	Rating	Wt (lbs)	Open In ²	Price
8" Round Standard	94-3208	H-25	10	18.0	\$26.67
10" Round Standard	94-3210	H-25	14	29.0	\$50.00
12" Round Standard	94-3212	H-25	65	21.0	\$228.33
15" Round Standard	94-3215	H-25	83	37.5	\$266.67
18" Round Standard	94-3218	H-25	113	62.0	\$288.33
24" Round Standard	94-3224	H-25	178	122.0	\$495.00
30" Round Standard	94-3230	H-25	270	206.0	\$783.33
36" Round Standard	94-3236	H-25	367	352.0	\$916.67



Solid H-25 (Frame & Cover except 8" and 10", which are one-piece)

Size	Part No	Rating	Wt (lbs)	Open In ²	Price
8" Round Solid	94-3408	H-25	11	na	\$43.33
10" Round Solid	94-3410	H-25	17	na	\$56.67
12" Round Solid	94-3412	H-25	70	na	\$288.33
15" Round Solid	94-3415	H-25	98	na	\$351.67
18" Round Solid	94-3418	H-25	134	na	\$401.67
24" Round Solid	94-3424	H-25	224	na	\$666.67
30" Round Solid	94-3430	H-25	329	na	\$928.33
36" Round Solid	94-3436	H-25	495	na	\$1,083.33



Domed NR⁸ (One-Piece Drop-In)

Size	Part No	Rating	Wt (lbs)	Open In ²	Price
8" Round Domed	94-3608	NR ⁹	9	20	\$43.33
10" Round Domed	94-3610	NR ⁹	17	29	\$66.67
12" Round Domed	94-3612	NR ⁹	31	21	\$228.33
15" Round Domed	94-3615	NR ⁹	38	75	\$266.67
18" Round Domed	94-3618	NR ⁹	48	120	\$428.33
24" Round Domed	94-3624	NR ⁹	124	155	\$700.00
30" Round Domed	94-3630	NR ⁹	175	270	\$1,097.00



Notes:

6. Round Grates with Frame (8"-10" = 1 piece, 12"-36" = 2 piece)
7. Grate fits inside SDR35 basin
8. Add \$63.33 for Locking Assembly
9. NR = Not Rated

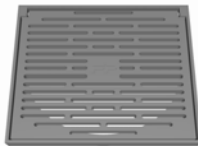
Drop-in Grates^{10, 11} (One-Piece)



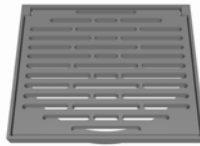
Drop-In H-10

Size	Part No	Rating	Wt (lbs)	Open In ²	Price
6" Round Drop-In	94-3806	H-10	6	6.0	\$43.33
8" Round Drop-In	94-3808	H-10	9	16.0	\$46.67
10" Round Drop-In	94-3810	H-10	13	26.0	\$61.67
12" Round Drop-In	94-3812	H-10	24	37.5	\$81.67
15" Round Drop-In	94-3815	H-10	37	63.0	\$125.00
18" Round Drop-In	94-3818	H-10	64	96.0	\$165.00
24" Round Drop-In	94-3824	H-10	110	164.0	\$288.33
30" Round Drop-In	94-3830	H-10	190	277.0	\$630.00

Square Hinged Grates with Frames^{12, 13} (Frame, Cover, & Hinge)



Pedestrian Hinged
H-10



Standard Hinged
H-25



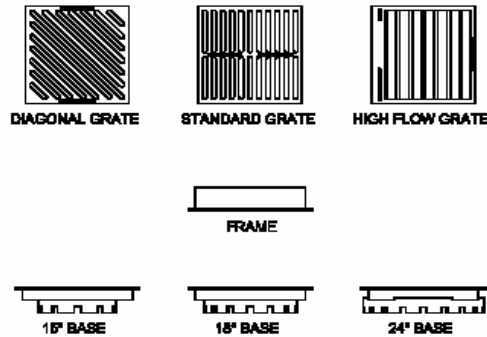
Solid Hinged
H-25

Size	Part #	Rating	Wt (lbs)	Open In ²	Price
12" Square Hinged Pedestrian	94-4012	H-10	42	63.0	\$183.33
15" Square Hinged Pedestrian	94-4015	H-10	60	101.0	\$216.67
12" Square Hinged Standard	94-4212	H-25	43	64.0	\$183.33
15" Square Hinged Standard	94-4215	H-25	59	95.0	\$216.67
12" Square Hinged Solid	94-4412	H-25	62	na	\$233.33
15" Square Hinged Solid	94-4415	H-25	80	na	\$283.33

Notes:

- 10. Drop-in Grates (1 piece) - fit inside SDR35 Basins
- 11. Add \$8.33 for Locking Assembly
- 12. Square Hinged Grates with Frame - fit outside SDR35 Basins
- 13. Add \$63.33 for Locking Assembly

Traffic Grate Pricing Only¹⁴



2' x 2' Traffic Grates	Part No	Rating	Wt (lbs)	Open In ²	Price
12" 2 x 2 Diagonal Traffic Assembly	94-605412	H-25	411	205.0	\$667.00
15" 2 x 2 Diagonal Traffic Assembly	94-605415	H-25	397	205.0	\$667.00
18" 2 x 2 Diagonal Traffic Assembly	94-605418	H-25	389	205.0	\$667.00
24" 2 x 2 Diagonal Traffic Assembly	94-605424	H-25	378	205.0	\$667.00
30" 2 x 2 Diagonal Traffic Assembly	94-605430	H-25	430	205.0	\$667.00
12" 2 x 2 Standard Traffic Assembly	94-605512	H-25	407	212.0	\$667.00
15" 2 x 2 Standard Traffic Assembly	94-605515	H-25	393	212.0	\$667.00
18" 2 x 2 Standard Traffic Assembly	94-605518	H-25	385	212.0	\$667.00
24" 2 x 2 Standard Traffic Assembly	94-605524	H-25	374	212.0	\$667.00
30" 2 x 2 Standard Traffic Assembly	94-605530	H-25	426	212.0	\$667.00
12" 2 x 2 High Flow Traffic Assembly	94-605612	H-25	399	290.0	\$667.00
15" 2 x 2 High Flow Traffic Assembly	94-605615	H-25	352	290.0	\$667.00
18" 2 x 2 High Flow Traffic Assembly	94-605618	H-25	344	290.0	\$667.00
24" 2 x 2 High Flow Traffic Assembly	94-605624	H-25	333	290.0	\$667.00
30" 2 x 2 High Flow Traffic Assembly	94-605630	H-25	385	290.0	\$667.00

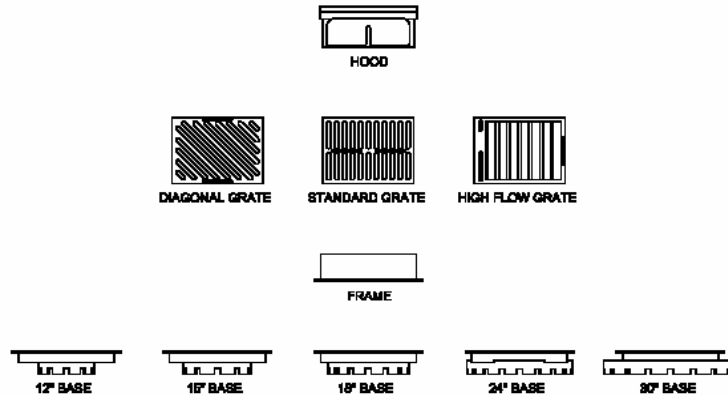
2' x 3' Traffic Grates	Part No	Rating	Wt (lbs)	Open In ²	Price
18" 2 x 3 Diagonal Traffic Assembly	94-625418	H-25	551	328.0	\$767.00
24" 2 x 3 Diagonal Traffic Assembly	94-625424	H-25	535	328.0	\$767.00
30" 2 x 3 Diagonal Traffic Assembly	94-625430	H-25	540	328.0	\$767.00
18" 2 x 3 Standard Traffic Assembly	94-625518	H-25	547	330.0	\$767.00
24" 2 x 3 Standard Traffic Assembly	94-625524	H-25	531	330.0	\$767.00
30" 2 x 3 Standard Traffic Assembly	94-625530	H-25	536	330.0	\$767.00
18" 2 x 3 High Flow Traffic Assembly	94-625618	H-25	506	458.0	\$767.00
24" 2 x 3 High Flow Traffic Assembly	94-625624	H-25	490	458.0	\$767.00
30" 2 x 3 High Flow Traffic Assembly	94-625630	H-25	495	458.0	\$767.00

Notes:

14. Grate Assemblies include: Grate + Frame + Base Adaptor

HARRINGTON CORPORATION PO BOX 10335 LYNCHBURG, VIRGINIA 24506-0335
 PHONE 800-825-7094 FAX 434-845-7094 E-MAIL: sales@harcofittings.com web: www.harcofittings.com

Curb Inlet Grate Pricing Only¹⁵



2' x 2' Curb Inlet Grates	Part No	Rating	Wt (lbs)	Open In ²	Price
12" 2 x 2 Diagonal Curb Assembly	94-645412	H-25	432	147.0	\$997.00
15" 2 x 2 Diagonal Curb Assembly	94-645415	H-25	432	147.0	\$997.00
18" 2 x 2 Diagonal Curb Assembly	94-645418	H-25	432	147.0	\$997.00
24" 2 x 2 Diagonal Curb Assembly	94-645424	H-25	432	147.0	\$997.00
30" 2 x 2 Diagonal Curb Assembly	94-645430	H-25	432	147.0	\$997.00
12" 2 x 2 Standard Curb Assembly	94-645512	H-25	433	148.0	\$997.00
15" 2 x 2 Standard Curb Assembly	94-645515	H-25	433	148.0	\$997.00
18" 2 x 2 Standard Curb Assembly	94-645518	H-25	433	148.0	\$997.00
24" 2 x 2 Standard Curb Assembly	94-645524	H-25	433	148.0	\$997.00
30" 2 x 2 Standard Curb Assembly	94-645530	H-25	433	148.0	\$997.00
12" 2 x 2 High Flow Curb Assembly	94-645612	H-25	400	208.0	\$997.00
15" 2 x 2 High Flow Curb Assembly	94-645615	H-25	400	208.0	\$997.00
18" 2 x 2 High Flow Curb Assembly	94-645618	H-25	400	208.0	\$997.00
24" 2 x 2 High Flow Curb Assembly	94-645624	H-25	400	208.0	\$997.00
30" 2 x 2 High Flow Curb Assembly	94-645630	H-25	400	208.0	\$997.00

2' x 3' Curb Inlet Grates	Part No	Rating	Wt (lbs)	Open In ²	Price
18" 2 x 3 Diagonal Curb Assembly	94-665418	H-25	586	233.0	\$1,132.00
24" 2 x 3 Diagonal Curb Assembly	94-665424	H-25	586	233.0	\$1,132.00
30" 2 x 3 Diagonal Curb Assembly	94-665430	H-25	586	233.0	\$1,132.00
18" 2 x 3 Standard Curb Assembly	94-665518	H-25	599	202.0	\$1,132.00
24" 2 x 3 Standard Curb Assembly	94-665524	H-25	599	202.0	\$1,132.00
30" 2 x 3 Standard Curb Assembly	94-665530	H-25	599	202.0	\$1,132.00
18" 2 x 3 High Flow Curb Assembly	94-665618	H-25	585	328.0	\$1,132.00
24" 2 x 3 High Flow Curb Assembly	94-665624	H-25	585	328.0	\$1,132.00
30" 2 x 3 High Flow Curb Assembly	94-665630	H-25	585	328.0	\$1,132.00

Notes:

15. Grate Assemblies include: Hood + Grate + Frame + Base Adaptor

HARRINGTON CORPORATION PO BOX 10335 LYNCHBURG, VIRGINIA 24506-0335
 PHONE 800-825-7094 FAX 434-845-7094 E-MAIL: sales@harcofittings.com web: www.harcofittings.com