

PRICE LIST

HARCO MECHANICAL JOINT GASKETS

Standard Mechanical Joint Gaskets AWWA C111 (ANSI A21.11)

SIZE	PART NUMBER	LIST PRICE	CTN. QTY.	CTN. WT.
3"	40103	\$2.08	65	17
4"	40104	1.55	125	56
6"	40106	2.18	90	54
8"	40108	2.75	65	48
10"	40110	3.68	50	49
12"	40112	4.07	40	46
14"	40114	7.86	35	44
16"	40116	8.36	30	43
18"	40118	8.94	30	48
20"	40120	9.03	25	45
24"	40124	\$9.34	20	42

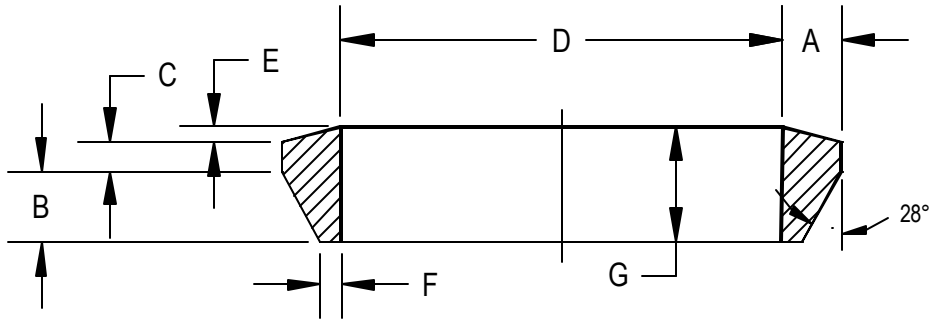
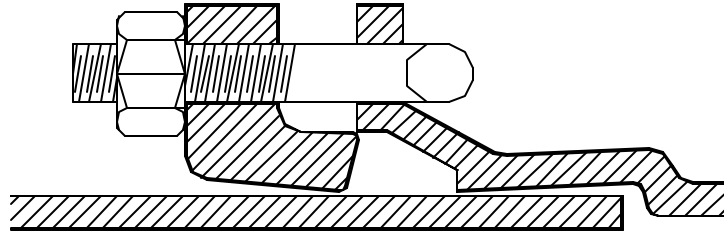
Transition Mechanical Joint Gaskets (MJ x IPS)

SIZE	PART NUMBER	LIST PRICE	CTN. QTY.	CTN. WT.
2"	40202	\$2.24	65	12
3"	40203	2.24	65	24
4"	40204	2.24	120	62
6"	40206	2.95	80	61
8"	40208	3.99	40	42
10"	40210	5.45	35	46
12"	40212	\$6.08	30	49

MJ x SDR 35 Transition Gaskets

SIZE	PART NUMBER	LIST PRICE	WEIGHT EACH (LBS.)
4"	41304	\$ 7.40	0.5
6"	41306	8.20	0.7
8"	41308	9.52	1.1
10"	41310	15.84	1.3
12"	41312	\$20.03	1.5

Mechanical Joint Gaskets



Standard Mechanical
Joint Gaskets
AWWA C111
(ANSI A21.11)

Size	Pipe O.D.	Dimensions of Plain Rubber Gaskets						
		A ±0.01 in.	B	C	D ±1%	E	F ±0.01 in.	G ±0.02 in.
3	3.96	0.48	0.62	0.31	3.86	0.12	0.15	1.05
4	4.80	0.62	0.75	0.31	4.68	0.16	0.22	1.22
6	6.90	0.62	0.75	0.31	6.73	0.16	0.22	1.22
8	9.05	0.62	0.75	0.31	8.85	0.16	0.22	1.22
10	11.10	0.62	0.75	0.31	10.87	0.16	0.22	1.22
12	13.20	0.62	0.75	0.31	12.95	0.16	0.22	1.22
14	15.30	0.62	0.75	0.31	14.99	0.16	0.22	1.22
16	17.40	0.62	0.75	0.31	17.07	0.16	0.22	1.22
18	19.50	0.62	0.75	0.31	19.13	0.16	0.22	1.22
20	21.60	0.62	0.75	0.31	21.20	0.16	0.22	1.22
24	25.80	0.62	0.75	0.31	25.34	0.16	0.22	1.22

Mechanical Joint
Transition Gaskets
(MJ x IPS)

Size	Pipe O.D.	A	B	C	D	E	F	G
2	2.375	0.54	0.62	0.31	2.36	0.12	0.21	1.05
3	3.500	0.71	0.62	0.31	3.40	0.12	0.38	1.05
4	4.500	0.77	0.75	0.31	4.38	0.16	0.37	1.22
6	6.625	0.76	0.75	0.31	6.46	0.16	0.36	1.22
8	8.625	0.83	0.75	0.31	8.43	0.16	0.43	1.22
10	10.750	0.80	0.75	0.31	10.52	0.16	0.40	1.22
12	12.750	0.85	0.75	0.31	12.50	0.16	0.45	1.22

MJ x SDR 35
Transition Gaskets

Size	Pipe O.D.	A	B	C	D	E	F	G
4	4.215	0.91	0.75	0.31	4.10	0.16	0.51	1.22
6	6.275	0.93	0.75	0.31	6.11	0.16	0.53	1.22
8	8.400	0.95	0.75	0.31	8.20	0.16	0.55	1.22
10	10.500	0.92	0.75	0.31	10.27	0.16	0.52	1.22
12	12.500	0.97	0.75	0.31	12.25	0.16	0.57	1.22

Note:

- Gaskets comply with AWWA C111 (ANSI A21.11).
- All dimensions are in inches.