

# PVC-IPS FITTINGS SUBMITTAL

## HARCO Class 200 PVC Fittings

### SIZES

Harco Class 200 Pressure Pipe Fittings will fit all IPS Pipe (Iron Pipe Size). IPS Pipe is available in SDR 21, Class 200; SDR 26, Class 160; Schedule 40 and Schedule 80. Harco offers a wide selection of sizes 1 1/2" thru 8", and a full compliment of reducers, reducing tees, and adapters. Harco's large inventory assures you of fast and complete orders.

### QUALITY

Harco Pressure Pipe Fittings are manufactured from virgin PVC material approved by the National Sanitation Foundation (NSF) for use in potable water systems. High strength and long serviceability is assured by rigorous and continuing quality control testing.

### SUPERIOR CONSTRUCTION

Harco's unique combination of one piece construction and heavy gasket design, assure the installer of a sure seal, backed by millions of installed, trouble free joints.



**THE HARRINGTON CORPORATION**

P.O. Box 10335

Lynchburg, Virginia 24506

(434)845-7094

[www.harcofittings.com](http://www.harcofittings.com)

## CLASS 200 PVC FITTINGS

ALL DIMENSIONS IN INCHES; WEIGHTS IN POUNDS

### SUGGESTED SPECIFICATION

All fittings for Iron Pipe Size pipe shall be manufactured in one piece of injection molded PVC compound meeting ASTM D1784. Fittings shall be Class 200 and conform to requirements of DR 21. Fittings shall be designed to withstand a minimum of 630 psi quick burst pressure at 73 degrees F., tested in accordance with ASTM D1599. Bell shall be gasketed joint conforming to ASTM D3139 with gaskets conforming to ASTM F477. Push Joint or Mechanical Joint Ductile Iron fittings meeting AWWA C153 shall be allowed as alternative when PVC sizes are not available.

### STANDARD JOINT DIMENSIONS (IN INCHES)

Nominal Diameter	O.D. Pipe	A	C	D	T	ID
1 1/2"	1.900	3.168	2.418	1.938	0.107	1.720
2	2.375	3.273	2.523	2.413	0.133	2.149
2 1/2"	2.875	3.383	2.633	2.913	0.158	2.601
3	3.500	3.520	2.770	3.538	0.191	3.166
4	4.500	4.103	2.990	4.558	0.246	4.072
6	6.625	4.571	3.458	6.683	0.358	5.993
8	8.625	5.161	3.898	8.708	0.463	7.805

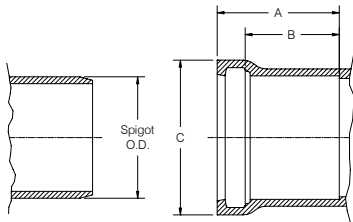
# HARCO PVC IPS GASKETED FITTINGS

## DESIGN DATA

### Applicable Standards

Materials: ASTM D-1784, NSF 14  
 Joints: ASTM D-3139  
 Gaskets: ASTM F-477  
 Wall Thickness: SDR-21  
 NSF 14 Certification.

### BELL SPECIFICATIONS



SIZE	STYLE	A	B	C	Spigot O.D.
1½	H	3.17	2.42	2.8	1.90
2	H	3.27	2.52	3.3	2.38
2½	H	3.38	2.63	3.8	2.88
3	H	3.52	2.77	4.5	3.50
4	H	4.10	2.99	5.9	4.50
6	H	4.57	3.46	8.3	6.63
8	H	5.16	3.90	10.4	8.63
10	Fab	5.75	4.70	11.5	10.75
12	Fab	6.15	4.90	12.0	12.75

### NOTES:

- All lay lengths & weights are approximate and are subject to change without notice.
- Fabricated fitting configurations may vary.

### STYLE LEGEND:

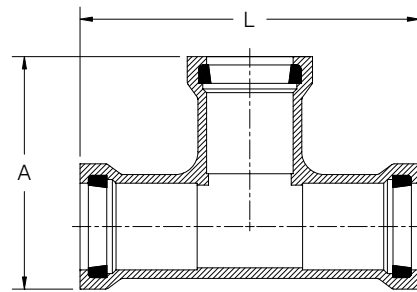
- H ---- Harco style one piece molded.  
 HB --- Harco style one piece molded, reduced by use of flush style thd x thd bushing.  
 F ---- Flo style one piece molded.  
 FB --- Flo style one piece molded, reduced by use of flush style thd x thd bushing.  
 C ---- Manufactured by Certain-Teed Corporation.  
 A ---- Assembled using one piece molded fitting with MIPT x Gasketed adapter or Spigot adapter for branch or BELL.  
 Fab - Fabricated using SCH-40 PVC fittings with Harco Spigot adapters (or pipe) solvent welded together. (See pressure rating warning on this page.)

**Warning:** Cyclical pressure surges (WATER HAMMER) can reduce the life of PVC fittings. Where such conditions may exist, HARCO DEEP BELL DUCTILE IRON FITTINGS for IPS size PVC pipe should be considered. HARCO DEEP BELL DUCTILE IRON FITTINGS are available in sizes 1½" through 12".

**Fab Style:** These fittings use SCH-40 PVC fittings. SCH-40 PVC fittings do not have a long term pressure rating. See section 6.3.2 of ASTM D2466-97. Use of these fittings in pressure systems is at user's risk.

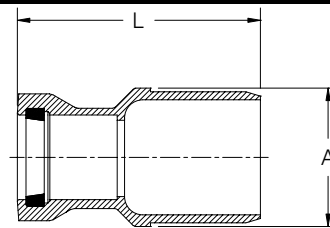
The use of anything but properly designed and installed thrust blocks will reduce the life of plastic fittings. Thrust blocks must be poured concrete only and sized for the soil conditions. Joint restraint products are available.

### TEE (GxGxG)



SIZE	PART No.	STYLE	A	L	WT. (approx.)
1½x1½	112-150	F	6.0	9.1	1.0
2x1½	112-215	H	6.1	9.1	1.3
2x2	112-220	H	6.1	9.1	1.4
2½x1½	112-251	A	8.4	9.9	1.4
2½x2	112-252	H	6.8	9.9	2.0
2½x2½	112-255	H	6.8	9.9	1.7
3x1½	112-315	A	9.4	10.9	2.5
3x2	112-320	H	7.7	11.4	2.8
3x2½	112-325	H	8.0	11.9	3.1
3x3	112-330	H	7.7	10.9	2.8
4x2	112-420	H	8.6	13.1	4.3
4x2½	112-425	H	8.5	13.1	4.9
4x3	112-430	H	8.8	13.1	4.9
4x4	112-440	H	9.3	13.1	5.6
5x5	112-550	F	11.0	14.8	10.0
6x2	112-620	A	12.2	11.6	2.8
6x3	112-630	H	11.5	12.5	3.0
6x4	112-640	H	11.8	16.3	11.0
6x6	112-660	H	11.5	16.4	12.3
8x4	112-840	H	13.9	19.5	18.7
8x6	112-860	H	14.4	19.5	19.3
8x8	112-880	H	14.9	19.5	21.3

### REDUCER (SxG)



SIZE	PART No.	STYLE	A	L	WT. (approx.)
2x1½	116-215	F	2.8	7.0	0.5
2½x2	116-252	F	3.4	7.0	0.8
3x2	116-320	F	3.7	7.9	0.9
3x2½	116-325	F	4.2	7.4	1.3
4x2	116-420	F	4.7	10.0	1.5
4x2½	116-425	F	5.0	8.3	1.8
4x3	116-430	F	4.7	10.1	1.9
5x4	116-540	F	5.8	7.8	3.0
6x3	116-630	F	7.0	9.0	3.5
6x4	116-640	H	6.9	8.0	2.7
6x5	116-650	Fab	7.0	10.0	4.9
8x6	116-860	H	9.0	9.3	5.8

CALL FOR OTHER SIZES, CONFIGURATIONS & GASKET MATERIALS.



### THE HARRINGTON CORPORATION

P.O. BOX 10335 • LYNCHBURG VIRGINIA 24506 • PLANT 3721 COHEN PLACE • LYNCHBURG VIRGINIA 24501  
 PHONE: (434) 845-7094 • FAX: (434) 845-8562 • E-mail: sales@harcofittings.com

# HARCO PVC IPS GASKETED FITTINGS

## DESIGN DATA

### Applicable Standards

Materials:	ASTM D-1784, NSF 14
Joints:	ASTM D-3139
Gaskets:	ASTM F-477
Wall Thickness:	SDR-21
NSF 14 Certification.	

### NOTES:

- All lay lengths & weights are approximate and are subject to change without notice.
- Fabricated fitting configurations may vary.

### STYLE LEGEND:

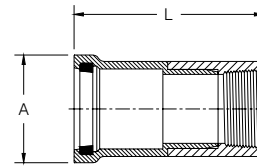
- H ----- Harco style one piece molded.  
 HB --- Harco style one piece molded, reduced by use of flush style thd x thd bushing.  
 F ----- Flo style one piece molded.  
 FB --- Flo style one piece molded, reduced by use of flush style thd x thd bushing.  
 C ----- Manufactured by Certain-Teed Corporation.  
 A ----- Assembled using one piece molded fitting with MIPT x Gasketed adapter or Spigot adapter for branch or BELL.  
 Fab – Fabricated using SCH-40 PVC fittings with Harco Spigot adapters (or pipe) solvent welded together. (See pressure rating warning on this page.)

**Warning:** Cyclical pressure surges (WATER HAMMER) can reduce the life of PVC fittings. Where such conditions may exist, HARCO DEEP BELL DUCTILE IRON FITTINGS for IPS size PVC pipe should be considered. HARCO DEEP BELL DUCTILE IRON FITTINGS are available in sizes 1½" through 12".

**Fab Style:** These fittings use SCH-40 PVC fittings. SCH-40 PVC fittings do not have a long term pressure rating. See section 6.3.2 of ASTM D2466-97. Use of these fittings in pressure systems is at user's risk.

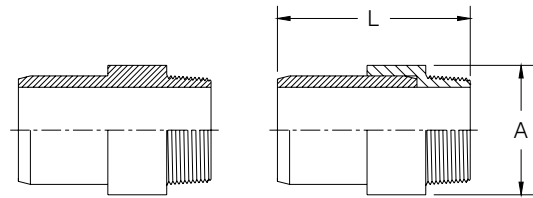
The use of anything but properly designed and installed thrust blocks will reduce the life of plastic fittings. Thrust blocks must be poured concrete only and sized for the soil conditions. Joint restraint products are available.

### GASKET x FEMALE NPT ADAPTER



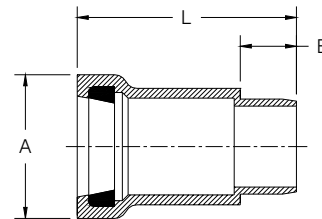
SIZE	PART No.	STYLE	A	L	WT. (approx.)
1½	132-015	Fab	2.7	5.7	0.5
2	132-020	Fab	3.3	6.1	0.7
2½	132-025	Fab	3.8	7.3	1.2
3	132-030	Fab	4.5	7.5	1.5
4	132-040	Fab	5.8	9.4	2.6
5	132-050	Fab	7.0	10.5	5.0
6	132-060	Fab	8.1	12.1	6.0

### PE (Plain End) x MALE NPT ADAPTER



SIZE	PART No.	STYLE	A	L	WT. (approx.)
1½	133-015	Fab	2.2	5.2	0.3
2	133-020	H	2.6	4.1	0.3
2½	133-025	Fab	3.3	6.3	0.8
3	133-030	Fab	4.0	6.9	1.3
4	133-040	Fab	5.0	7.5	2.0
6	133-060	Fab	7.3	9.8	5.3

### SPIGOT x GASKET ADAPTER



SIZE	PART No.	STYLE	A	B	L	WT. (approx.)
1½	130-015	H	2.7	1.1	4.5	0.3
2	130-020	H	3.3	1.4	4.9	0.5
2½	130-025	H	3.8	2.0	5.3	0.7
3	130-030	H	4.5	2.0	5.8	0.9
4	130-040	H	5.9	2.3	6.4	1.7
5	130-050	F	7.0	3.0	9.1	3.0
6	130-060	H	8.3	3.0	8.0	3.8

CALL FOR OTHER SIZES, CONFIGURATIONS & GASKET MATERIALS.



### THE HARRINGTON CORPORATION

P.O. BOX 10335 • LYNCHBURG VIRGINIA 24506 • PLANT 3721 COHEN PLACE • LYNCHBURG VIRGINIA 24501  
 PHONE: (434) 845-7094 • FAX: (434) 845-8562 • E-mail: sales@harcofittings.com

# HARCO PVC IPS GASKETED FITTINGS

## DESIGN DATA

### Applicable Standards

Materials: ASTM D-1784, NSF 14  
 Joints: ASTM D-3139  
 Gaskets: ASTM F-477  
 Wall Thickness: SDR-21  
 NSF 14 Certification.

### NOTES:

- All lay lengths & weights are approximate and are subject to change without notice.
- Fabricated fitting configurations may vary.

### STYLE LEGEND:

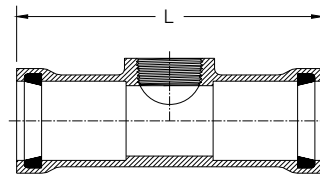
H ----- Harco style one piece molded.  
 HB --- Harco style one piece molded, reduced by use of flush style thd x thd bushing.  
 F ----- Flo style one piece molded.  
 FB --- Flo style one piece molded, reduced by use of flush style thd x thd bushing.  
 C ----- Manufactured by Certain-Teed Corporation.  
 A ----- Assembled using one piece molded fitting with MIPT x Gasketed adapter or Spigot adapter for branch or BELL.  
 Fab – Fabricated using SCH-40 PVC fittings with Harco Spigot adapters (or pipe) solvent welded together. (See pressure rating warning on this page.)

**Warning:** Cyclical pressure surges (WATER HAMMER) can reduce the life of PVC fittings. Where such conditions may exist, HARCO DEEP BELL DUCTILE IRON FITTINGS for IPS size PVC pipe should be considered. HARCO DEEP BELL DUCTILE IRON FITTINGS are available in sizes 1½" through 12".

**Fab Style:** These fittings use SCH-40 PVC fittings. SCH-40 PVC fittings do not have a long term pressure rating. See section 6.3.2 of ASTM D2466-97. Use of these fittings in pressure systems is at user's risk.

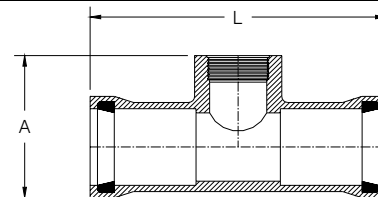
The use of anything but properly designed and installed thrust blocks will reduce the life of plastic fittings. Thrust blocks must be poured concrete only and sized for the soil conditions. Joint restraint products are available.

### SERVICE TEE (GxGxFIPT)(Treaded NPT Thread)



SIZE	PART No.	STYLE	L	WT. (approx.)
1½x¾	151-153	FB	8.5	0.8
1½x1	151-154	F	8.5	0.8
1½x1¼	151-155	Fab	10.9	0.8
2x½	151-202	HB	9.2	1.2
2x¾	151-203	H	9.2	1.2
2x1	151-204	H	9.2	1.2
2x1¼	151-205	H	9.2	1.2
2x1½	151-206	H	9.2	1.2
2½x½	151-252	HB	9.9	1.5
2½x¾	151-253	HB	9.9	1.5
2½x1	151-254	H	9.9	1.5
2½x1¼	151-255	H	9.9	1.5
2½x1½	151-256	H	9.9	1.5
2½x2	151-258	H	9.9	1.5
3x½	151-302	HB	11.0	2.5
3x¾	151-303	HB	11.0	2.5
3x1	151-304	H	11.0	2.5
3x1¼	151-305	H	11.0	2.5
3x1½	151-306	H	11.0	2.5
3x2	151-308	H	11.0	2.5
4x½	151-402	HB	10.7	3.1
4x¾	151-403	HB	10.7	3.1
4x1	151-404	H	10.7	3.1
4x1¼	151-405	H	10.7	3.1
4x1½	151-406	H	10.7	3.1
4x2	151-408	H	10.7	3.1
6x½	151-602	HB	9.3	5.8
6x¾	151-603	HB	9.3	5.8
6x1	151-604	HB	9.3	5.8
6x1¼	151-605	HB	9.3	5.8
6x1½	151-606	H	9.3	5.8
6x2	151-608	H	11.5	5.8

### SWING JOINT TEE (GxGxACME) (315psi rated)



SIZE	PART No.	STYLE	A	L	WT. (approx.)
2x1	153-204	H	4.5	9.2	1.4
2x1¼	153-205	H	4.5	9.2	1.4
2x1½	153-206	H	4.5	9.2	1.5
2½x1	153-252	H	4.4	9.6	1.9
2½x1¼	153-255	H	4.4	9.6	1.9
2½x1½	153-256	H	4.4	9.6	1.9

CALL FOR OTHER SIZES, CONFIGURATIONS & GASKET MATERIALS.



### THE HARRINGTON CORPORATION

P.O. BOX 10335 • LYNCHBURG VIRGINIA 24506 • PLANT 3721 COHEN PLACE • LYNCHBURG VIRGINIA 24501  
 PHONE: (434) 845-7094 • FAX: (434) 845-8562 • E-mail: sales@harcofittings.com

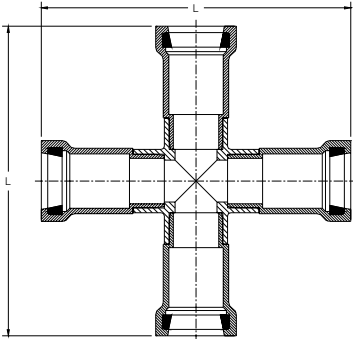
# HARCO PVC IPS GASKETED FITTINGS

## DESIGN DATA

### Applicable Standards

Materials: ASTM D-1784, NSF 14  
 Joints: ASTM D-3139  
 Gaskets: ASTM F-477  
 Wall Thickness: SDR-21  
 NSF 14 Certification.

### CROSS (GxGxGxG)



SIZE	PART No.	STYLE	L	WT. (approx.)
1½	153-015	Fab	11.6	1.7
2	153-020	Fab	12.1	3.4
2½	153-025	Fab	14.3	4.4
3	153-030	Fab	15.1	5.3
4	153-040	Fab	17.9	9.0

### NOTES:

- All lay lengths & weights are approximate and are subject to change without notice.
- Fabricated fitting configurations may vary.

### STYLE LEGEND:

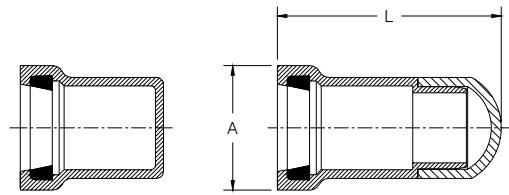
- H ----- Harco style one piece molded.  
 HB --- Harco style one piece molded, reduced by use of flush style thd x thd bushing.  
 F ----- Flo style one piece molded.  
 FB --- Flo style one piece molded, reduced by use of flush style thd x thd bushing.  
 C ---- Manufactured by Certain-Teed Corporation.  
 A ---- Assembled using one piece molded fitting with MIPT x Gasketed adapter or Spigot adapter for branch or BELL.  
 Fab – Fabricated using SCH-40 PVC fittings with Harco Spigot adapters (or pipe) solvent welded together. (See pressure rating warning on this page.)

**Warning:** Cyclical pressure surges (WATER HAMMER) can reduce the life of PVC fittings. Where such conditions may exist, HARCO DEEP BELL DUCTILE IRON FITTINGS for IPS size PVC pipe should be considered. HARCO DEEP BELL DUCTILE IRON FITTINGS are available in sizes 1½" through 12".

**Fab Style:** These fittings use SCH-40 PVC fittings. SCH-40 PVC fittings do not have a long term pressure rating. See section 6.3.2 of ASTM D2466-97. Use of these fittings in pressure systems is at user's risk.

The use of anything but properly designed and installed thrust blocks will reduce the life of plastic fittings. Thrust blocks must be poured concrete only and sized for the soil conditions. Joint restraint products are available.

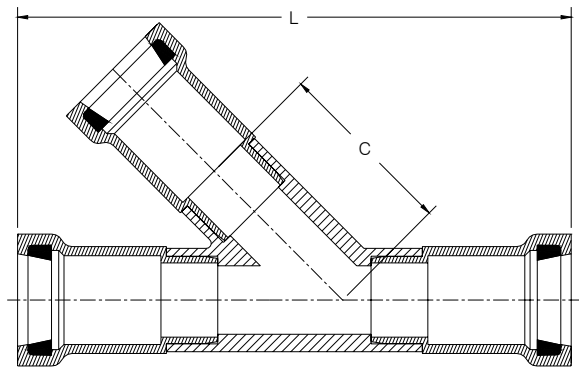
### CAP (Gasket)



Poured concrete thrust blocks only.

SIZE	PART No.	STYLE	A	L	WT. (approx.)
1½	149-015	Fab	2.8	5.3	0.5
2	149-020	H	3.3	3.7	0.5
2½	149-025	Fab	3.8	6.4	1.0
3	149-030	Fab	4.5	6.7	1.4
4	149-040	Fab	5.9	7.6	2.7
5	149-050	Fab	7.0	10.0	4.4
6	149-060	Fab	8.5	9.8	6.9

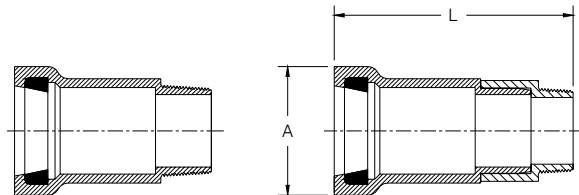
### NON\_PRESSURE WYE (GxGxG)



SIZE	PART No.	STYLE	C	L	WT. (approx.)
3x3	101-0303	Fab	6.8	10.1	5.0
4x4	101-0404	Fab	8.4	12.3	10.0

### GASKET x MALE NPT ADAPTER

Do not use joint restraint.



Size on size and reducing sizes of these adapters also available in Harco ductile iron.

SIZE	PART No.	STYLE	A	L	WT. (approx.)
1½x1¼	131-012	Fab	2.8	6.0	0.5
1½	131-015	H	2.8	4.3	0.5
2	131-020	H	3.3	4.6	0.5
2½	131-025	H	3.8	4.8	1.2
3	131-030	H	4.5	5.0	1.5
4	131-040	Fab	5.9	8.5	2.8
5	131-050	F			3.0
6	131-060	Fab	8.3	10.9	10.3

CALL FOR OTHER SIZES, CONFIGURATIONS & GASKET MATERIALS.



### THE HARRINGTON CORPORATION

P.O. BOX 10335 • LYNCHBURG VIRGINIA 24506 • PLANT 3721 COHEN PLACE • LYNCHBURG VIRGINIA 24501  
 PHONE: (434) 845-7094 • FAX: (434) 845-8562 • E-mail: sales@harcofittings.com

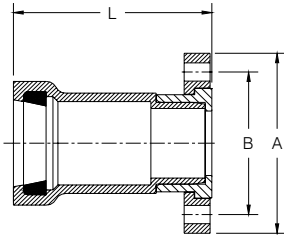
# HARCO PVC IPS GASKETED FITTINGS

## DESIGN DATA

### Applicable Standards

Materials: ASTM D-1784, NSF 14  
 Joints: ASTM D-3139  
 Gaskets: ASTM F-477  
 Wall Thickness: SDR-21  
 NSF 14 Certification.

### GASKET x FLANGE ADAPTER



SIZE	PART No.	STYLE	A	B	L	WT. (approx.)
1½	154-015	Fab	5.0	3.9	4.8	0.8
2	154-020	Fab	6.0	4.8	5.1	1.2
2½	154-025	Fab	7.0	5.5	5.8	1.7
3	154-030	Fab	7.5	6.0	6.0	2.4
4	154-040	Fab	9.0	7.5	7.0	6.0
6	154-060	Fab	11.0	9.5	8.3	12.0
8	154-080	Fab	13.5	11.8	17.7	20.0

### NOTES:

- All lay lengths & weights are approximate and are subject to change without notice.
- Fabricated fitting configurations may vary.

### STYLE LEGEND:

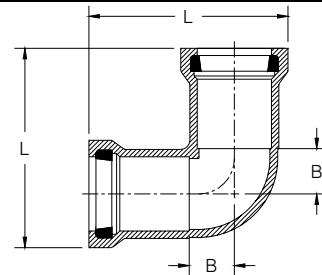
- H ---- Harco style one piece molded.  
 HB --- Harco style one piece molded, reduced by use of flush style thd x thd bushing.  
 F ---- Flo style one piece molded.  
 FB --- Flo style one piece molded, reduced by use of flush style thd x thd bushing.  
 C ---- Manufactured by Certain-Teed Corporation.  
 A ---- Assembled using one piece molded fitting with MIPT x Gasketed adapter or Spigot adapter for branch or BELL.  
 Fab – Fabricated using SCH-40 PVC fittings with Harco Spigot adapters (or pipe) solvent welded together. (See pressure rating warning on this page.)

**Warning:** Cyclical pressure surges (WATER HAMMER) can reduce the life of PVC fittings. Where such conditions may exist, HARCO DEEP BELL DUCTILE IRON FITTINGS for IPS size PVC pipe should be considered. HARCO DEEP BELL DUCTILE IRON FITTINGS are available in sizes 1½" through 12".

**Fab Style:** These fittings use SCH-40 PVC fittings. SCH-40 PVC fittings do not have a long term pressure rating. See section 6.3.2 of ASTM D2466-97. Use of these fittings in pressure systems is at user's risk.

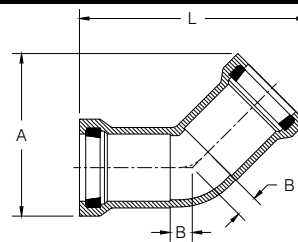
The use of anything but properly designed and installed thrust blocks will reduce the life of plastic fittings. Thrust blocks must be poured concrete only and sized for the soil conditions. Joint restraint products are available.

### 90° BEND (GxG)



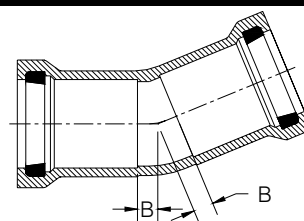
SIZE	PART No.	STYLE	B	L	WT. (approx.)
1½	118-015	F	1.0	4.8	0.6
2	118-020	H	1.3	6.2	0.8
2½	118-025	H	1.6	6.8	1.3
3	118-030	H	2.0	7.7	1.8
4	118-040	H	2.5	9.5	3.8
6	118-060	H	3.6	12.3	9.0
8	118-080	H	4.5	14.9	16.3

### 45° BEND (GxG)



SIZE	PART No.	STYLE	A	B	L	WT. (approx.)
1½	122-015	Fab	5.8	0.9	9.1	0.9
2	122-020	H	5.3	0.6	7.8	0.8
2½	122-025	H	6.1	0.7	8.3	1.1
3	122-030	H	6.6	0.9	9.1	1.6
4	122-040	H	8.4	1.1	11.0	3.4
6	122-060	H	11.3	1.6	13.6	7.8
8	122-080	H	13.8	2.0	15.8	13.3

### 22½° BEND



SIZE	PART No.	STYLE	B	WT. (approx.)
2	124-020	Fab	2.0	2.0
2½	124-025	Fab	2.0	3.0
3	124-030	Fab	2.3	3.0
4	124-040	Fab	2.6	5.0
6	124-060	Fab	4.3	11.0

CALL FOR OTHER SIZES, CONFIGURATIONS & GASKET MATERIALS.



### THE HARRINGTON CORPORATION

P.O. BOX 10335 • LYNCHBURG VIRGINIA 24506 • PLANT 3721 COHEN PLACE • LYNCHBURG VIRGINIA 24501  
 PHONE: (434) 845-7094 • FAX: (434) 845-8562 • E-mail: sales@harcofittings.com

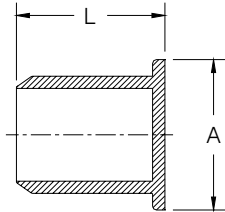
# HARCO PVC IPS GASKETED FITTINGS

## DESIGN DATA

### Applicable Standards

Materials: ASTM D-1784, NSF 14  
 Joints: ASTM D-3139  
 Gaskets: ASTM F-477  
 Wall Thickness: SDR-21  
 NSF 14 Certification.

### PLUG (Spigot)



Poured concrete thrust blocks only.

SIZE	PART No.	STYLE	A	L	WT. (approx.)
1½	144-015	Fab	2.7	5.2	0.2
2	144-020	H	3.0	2.7	0.2
2½	144-025	H	3.4	5.3	0.8
3	144-030	H	3.8	3.5	0.4
4	144-040	H	5.0	3.5	0.4
6	144-060	H	6.8	5.4	2.3
8	144-080	H	8.9	6.4	3.8

### NOTES:

- All lay lengths & weights are approximate and are subject to change without notice.
- Fabricated fitting configurations may vary.

### STYLE LEGEND:

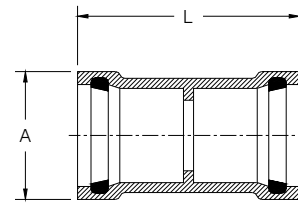
- H ----- Harco style one piece molded.  
 HB --- Harco style one piece molded, reduced by use of flush style thd x thd bushing.  
 F ----- Flo style one piece molded.  
 FB --- Flo style one piece molded, reduced by use of flush style thd x thd bushing.  
 C ---- Manufactured by Certain-Teed Corporation.  
 A ---- Assembled using one piece molded fitting with MIPT x Gasketed adapter or Spigot adapter for branch or BELL.  
 Fab – Fabricated using SCH-40 PVC fittings with Harco Spigot adapters (or pipe) solvent welded together. (See pressure rating warning on this page.)

**Warning:** Cyclical pressure surges (WATER HAMMER) can reduce the life of PVC fittings. Where such conditions may exist, HARCO DEEP BELL DUCTILE IRON FITTINGS for IPS size PVC pipe should be considered. HARCO DEEP BELL DUCTILE IRON FITTINGS are available in sizes 1½” through 12”.

**Fab Style:** These fittings use SCH-40 PVC fittings. SCH-40 PVC fittings do not have a long term pressure rating. See section 6.3.2 of ASTM D2466-97. Use of these fittings in pressure systems is at user's risk.

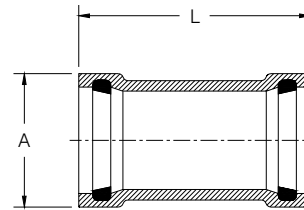
The use of anything but properly designed and installed thrust blocks will reduce the life of plastic fittings. Thrust blocks must be poured concrete only and sized for the soil conditions. Joint restraint products are available.

### LINE COUPLING (w/ Stop)



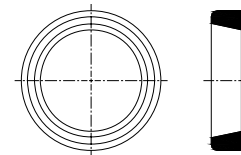
SIZE	PART No.	STYLE	A	L	WT. (approx.)
1½	108-015	H	2.8	6.5	0.5
2	108-020	H	3.3	6.7	0.7
2½	108-025	H	3.8	7.0	0.9
3	108-030	H	4.5	7.2	1.3
4	108-040	H	5.9	8.3	2.7
6	108-060	H	8.3	9.3	5.6
8	108-080	H	10.4	11.1	10.3
10	108-100	C	11.5	11.5	14.0
12	108-120	C	12.0	12.0	22.0

### REPAIR COUPLING (No Stop) HARCO STYLE



SIZE	PART No.	STYLE	A	L	WT. (approx.)
1½	109-015	H	2.8	6.5	0.5
2	109-020	H	3.3	7.8	0.7
2½	109-025	H	3.8	8.4	0.9
3	109-030	H	4.5	9.0	1.3
4	109-040	H	5.9	10.6	2.7
5	109-050	H	7.0	11.2	4.1
6	109-060	H	8.3	11.6	5.6
8	109-080	H	10.4	11.1	10.3
10	109-100	C	11.5	11.5	14.0
12	109-120	C	12.0	12.0	22.0

### REPLACEMENT GASKET HARCO STYLE



SIZE	PART No.	WT. (approx.)
1½	195.015	0.1
2	195-020	0.1
2½	195-025	0.1
3	195-030	0.1
4	195-040	0.2
6	195-060	0.3
8	195-080	0.3

CALL FOR OTHER SIZES, CONFIGURATIONS & GASKET MATERIALS.



### THE HARRINGTON CORPORATION

P.O. BOX 10335 • LYNCHBURG VIRGINIA 24506 • PLANT 3721 COHEN PLACE • LYNCHBURG VIRGINIA 24501  
 PHONE: (434) 845-7094 • FAX: (434) 845-8562 • E-mail: sales@harcofittings.com

# THE HARRINGTON CORPORATION

---

P.O. BOX 10335 • LYNCHBURG, VIRGINIA 24506 • PHONE: (434) 845-7094  
PLANT : 3721 COHEN PLACE TELEFAX (434) 845-8562  
EMAIL: sales@harcofittings.com

July 26, 2006

## **IPS SIZE PRESSURE FITTINGS AND GASKETS**

TO WHOM IT MAY CONCERN:

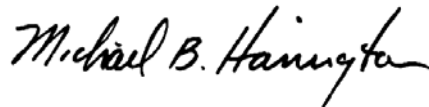
HARCO IPS SIZE PRESSURE FITTINGS AND GASKETS ARE LONG TERM PRESSURE RATED 200 PSI IF NOT OTHERWISE INDICATED AND MEET THE FOLLOWING SPECIFICATIONS, STANDARDS AND APPROVALS:

NSF STANDARDS 14 & 61  
ASTM D-1784 MATERIALS  
ASTM D-3139 JOINTS  
SDR 21 DIMENSIONS AND PRESSURE RATINGS PER ASTM D2241  
ASTM F-477 GASKETS  
NSF APPROVAL

### ROUTINE PRODUCTION TESTS

ASTM D-2122 - DIMENSIONAL CHECK  
ASTM D-1599 - SHORT TIME BURST TEST  
ASTM D-2152 - ACETONE TEST

THE HARRINGTON CORPORATION



Michael B. Harrington  
President