



Fabricated Drainage Products

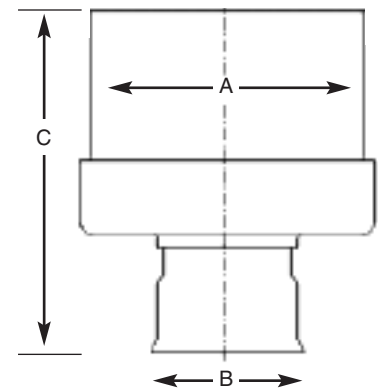
Inline Drains

- Heavy duty, abrasion and corrosion resistant, HARCO Fittings Inline Drains are fabricated from ASTM D3034 sewer pipe.
- Made to order...specify drain body size, outlet, size and grate.
- Field adjustments at the job site are fast and easy. Simply adjust drop height from the drain to the main line.



(A) Pipe Size	(B) Outlet Size	(C) Overall Height
8"	4"	17"
8"	6"	19"
8"	8"	17"
10"	4"	17"
10"	6"	18"
10"	8"	20"
10"	10"	18"
12"	4"	17"
12"	6"	18"
12"	8"	19"
12"	10"	22"
12"	12"	20"
15"	4"	16"
15"	6"	18"
15"	8"	19"
15"	10"	20"
15"	12"	23"
15"	15"	21"
18"	4"	17"
18"	6"	18"
18"	8"	19"
18"	10"	20"
18"	12"	21"
18"	15"	26"
18"	18"	24"

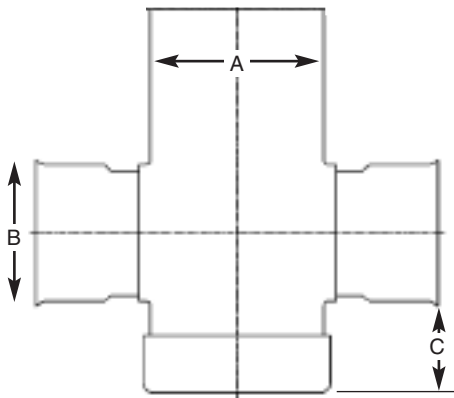
(A) Pipe Size	(B) Outlet Size	(C) Overall Height
24"	4"	17"
24"	6"	18"
24"	8"	19"
24"	10"	20"
24"	12"	21"
24"	15"	23"
24"	18"	25"
24"	24"	12"
30"	4"	17"
30"	6"	18"
30"	8"	19"
30"	10"	20"
30"	12"	21"
30"	15"	23"
30"	18"	25"
30"	24"	28"
30"	30"	26"
36"	4"	15"
36"	6"	16"
36"	8"	17"
36"	10"	18"
36"	12"	23"
36"	15"	21"
36"	18"	23"
36"	24"	26"
36"	30"	29"
36"	36"	25"



Drain Basins

- Heavy duty PVC construction fabricated for superior strength and durability.
- Completely custom made...specify body size, height, outlet (size, type and location) and grate.
- Minimal field adjustments with optional risers

(A) Pipe Size	(B) Outlet Size	(C) Min. Basin Height
8"	4 - 8"	4"
10"	4 - 10"	6"
12"	4 - 12"	6"
15"	4 - 15"	6"
18"	4 - 18"	6"
24"	4 - 24"	8"
30"	4 - 30"	10"
36"	4 - 30"	14"



Outlets can be positioned at any angle 0°-359° subject to verification



Optional Grates

All HARCO Fittings grates are corrosion resistant coated, heavy duty ductile iron and will fit PVC basins as well as most HDPE and PVC pipe sizes.

Drop In Open Area

	Pedestrian	Domed
6"	6 sq in	NA
8"	17 sq in	20 sq in
10"	27 sq in	29 sq in
12"	35 sq in	29 sq in
15"	47 sq in	75 sq in
18"	74 sq in	120 sq in
24"	154 sq in	155 sq in
30"	206 sq in	270 sq in

Square Hinged Open Area

	Standard	Pedestrian
12"	64 sq in	63 sq in
15"	95 sq in	101 sq in

Round Open Area

	Standard	Pedestrian
8"	18 sq in	17 sq in
10"	29 sq in	27 sq in
12"	21 sq in	35 sq in
15"	37 sq in	47 sq in
18"	62 sq in	74 sq in
24"	122 sq in	154 sq in
30"	206 sq in	NA
36"	352 sq in	NA

Traffic & Curb Open Area

	Standard	Diagonal	High Flow
2'x2'	212 sq in	205 sq in	290 sq in
2'x3'	330 sq in	328 sq in	458 sq in

Pedestrian H-10 Rated



Domed



Standard H-20 Rated



Pedestrian H-10 Rated



Solid H-20 Rated



Standard H-20 Rated



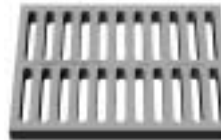
Pedestrian H-10 Rated



Solid H-20 Rated



Standard H-20 Rated



Diagonal H-20 Rated

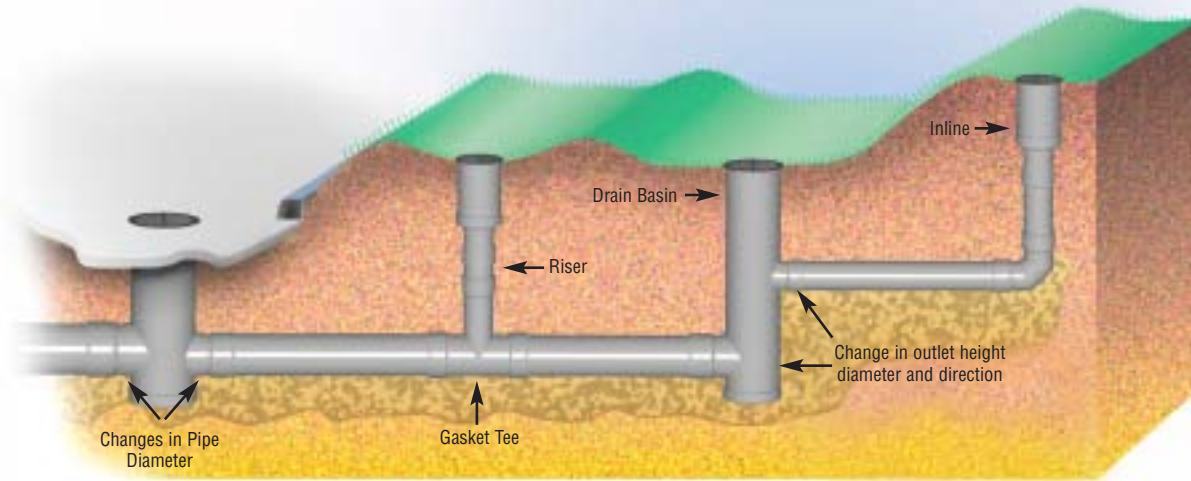


High Flow H-20 Rated



Engineered Drainage System

Complete Drainage Systems....made to your Specifications



Inline Drains are used...

- At the beginning of a drain line
- Entering an existing drain line using a riser pipe and Tee

Drain Basins are used...

- For a sediment collection point with two or more inlets/outlets
- When outlets change diameter; pipe type, height, and direction

HARCO Fittings Engineered Drainage Products are the perfect choice for:

- | | | |
|----------------|----------------------------|-------------------------------|
| • Golf courses | • Recreation Complexes | • Roadways |
| • Parking lots | • Government Installations | • Commercial/Industrial Sites |
-

Economic and Durable Construction

HARCO Fittings inline drain and drain basin bodies are manufactured from PVC sewer pipe stock conforming to ASTM D3034 or F679 PVC sewer pipe stock conforming to ASTM D3034 or F679. The heavy-duty PVC bodies are abrasion resistant and virtually immune to most types of corrosion.

Inlet / Outlet Adapters

Installation is easy. Just specify the proper inlet/outlet type for the perfect fit to your piping system. Adapters fit:

- Corrugated Polyethylene
- Sewer (D3034 & F679)
- Iron Pipe Size
- C900 & C905
- Ribbed & Corrugated PVC

Made to Order

Every drainage system is different. Whether small or large, the system must adapt to multiple pipe types and diameters, changes in direction and elevation. HARCO Fittings drainage products can be completely customized to meet your design and installation specifications.



Drain Basin Quote/Order Form

Contact:			Date:
Company:			Quote #:
Address:			PO #:
City:			Phone:
St/Prov:	Zip:	Email:	

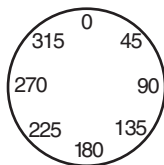
Job/Drawing #	Part #	Price
---------------	--------	-------

<input type="checkbox"/> Catch Basin <input type="checkbox"/> Inline Drain	Basin Dia
D3212 Water-Tight-Joint Required? <input type="checkbox"/> Yes <input type="checkbox"/> No	Basin Ht ¹ (A)
# Outlets :	Grate Type ² Grate Style ³

OUTLETS

I/O #	I/O Pipe Type ⁴	I/O Pipe Manufacturer	I/O Size	Position (Degrees)	Invert Height (B)
1					
2					
3					
4					
5					

Top View

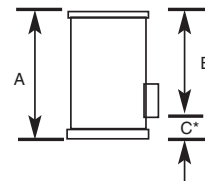


A= basin height (w/o grate)

B= invert height

C= minimum outlet height

Side View



NOTES:

All Catch Basins & Inline Drains are Non-returnable and Non-cancelable after placement of order

1. Basins over 8' (96") are 2 piece and require field assembly

2. Grate Types	3. Grate Styles	4. Pipe Types	(C) Minimum Outlet Ht
Round with Frame*	H10, H20 or Solid	Corrugated HDPE	24" Basin 8"
Square Hinged	H10, H20 or Solid	Sch40, Sch80	10" - 18" Basin 6"
Drop-In	H10 or Domed	Sewer, IPS, CIOD	8" Basin 4"
Traffic	H25: Standard, Diagonal or High Flow	Corrugated PVC	30" Basin 10"
Curb Inlet		Other	36" Basin 14"

*8" and 10" are one piece



PO Box 10335 • Lynchburg, VA 24506-0335
 Phone: 434-845-7094 • Fax: 434-845-8562
 e-mail: sales@harcofittings.com
www.harcofittings.com

Distributed by: