

Sewer Saddle Fitting Assembly Instructions

Items to be Assembled:

- #1 – PVC Saddle (Tee or Wye)
- #2 – Stainless Steel Strap
- #3 – Rubber Gasket
- #4 – Sewer Pipe

Note:

Not recommended when air test is necessary.

Step 1: Place saddle on pipe in the desired location. Draw the hole size by placing marking pencil inside the branch opening and marking the pipe.

Step 2: Using a saw (key hole or electric sabre), cut ¼” outside the line. Remove coupon from inside of pipe. Scrape any burrs that appear around the hole with a pocket knife or similar scraping tool.

Step 3: Place saddle on pipe to assure that the pipe opening is large enough to prevent obstruction. Enlarge hole if necessary.

Step 4: Remove dirt and foreign material from saddle gasket and wipe pipe as clean as conditions will allow.

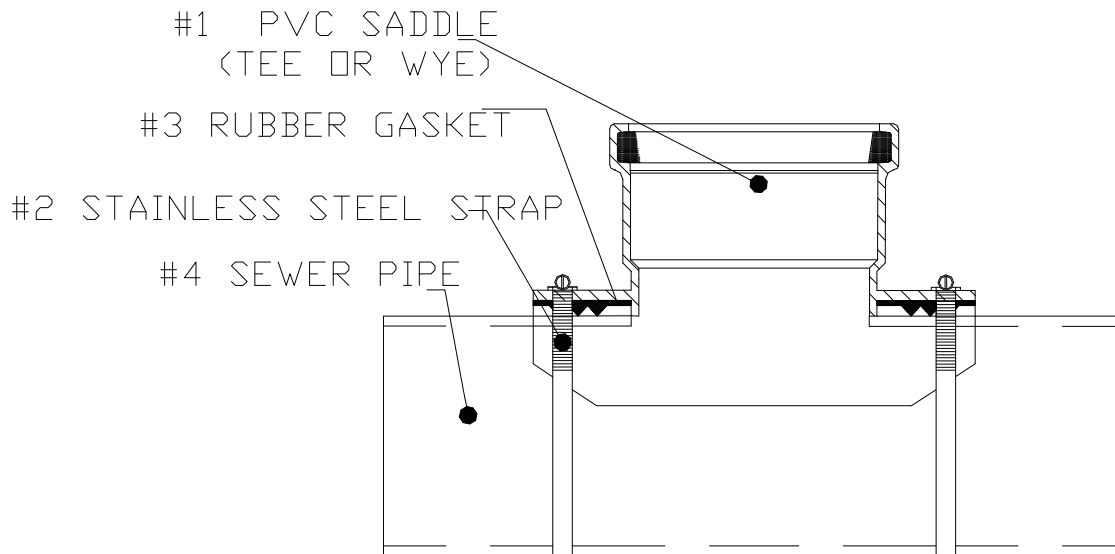
Step 5: Position saddle over hole, place straps into place and lightly tighten.

Step 6: Pull side skirts of saddle outward to allow gasket to seat itself properly on the pipe.

Step 7: Alternate tightening of both clamps, using equal pressures, until saddle is pulled down securely. Do this until a desired 60 inch-pounds is reached for each strap.

Step 8: Check saddle for alignment to assure that service line is clear of obstruction.

Step 9: Wait 5 minutes and retighten straps, if necessary, so that each band is tightened to 60 inch-pounds.



THE HARRINGTON CORPORATION

P.O. BOX 10335 • LYNCHBURG, VIRGINIA 24506 • PLANT: 3721 COHEN PLACE • LYNCHBURG VIRGINIA 24501
PHONE: (434) 845-7094 • FAX: (434) 845-8562 • E-mail: sales@harcofittings.com